

HOCKADEN AND ASSOCIATES, INC.

CONSULTING ENGINEERS

883 N. CASSADY AVENUE

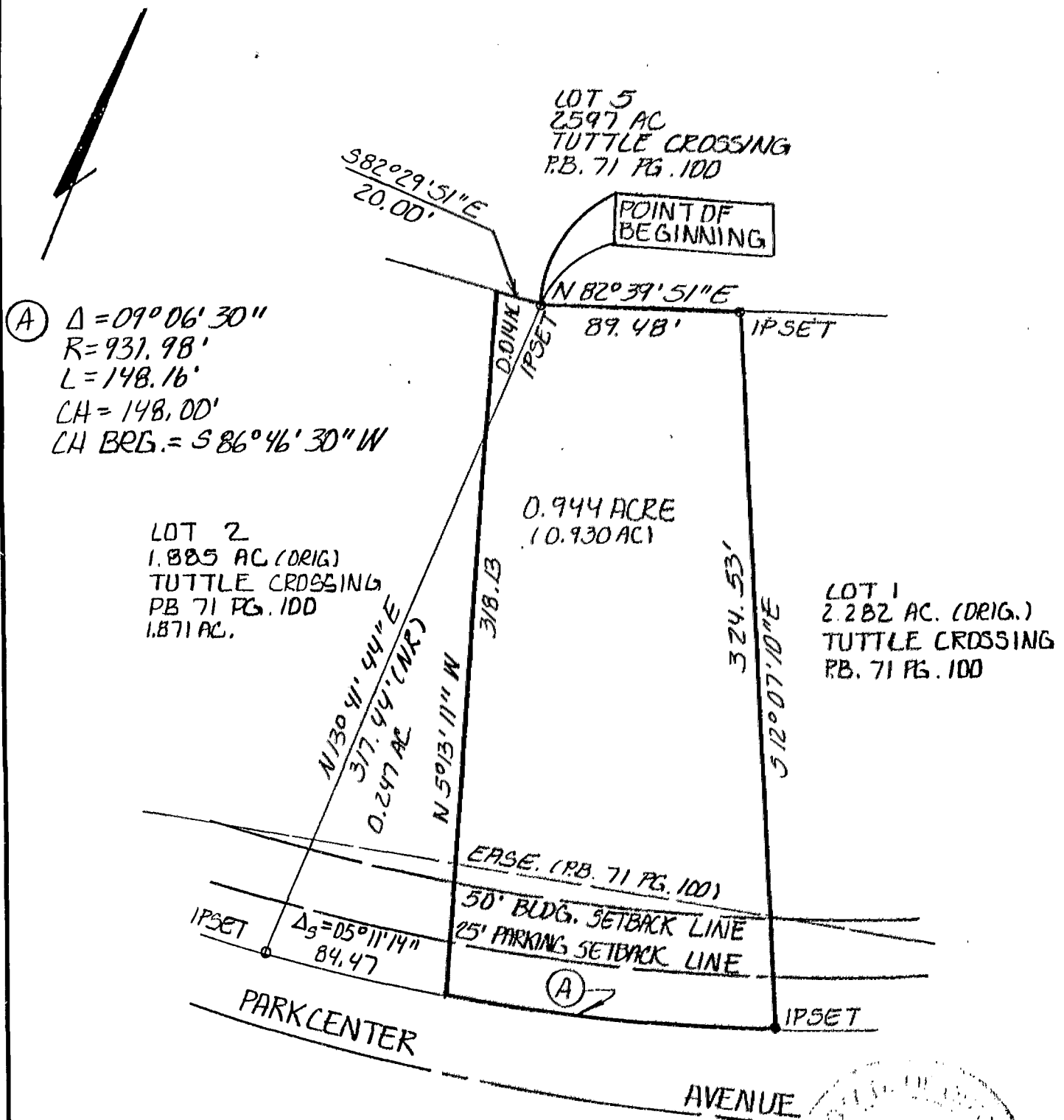
COLUMBUS, OHIO 43219

(614) 252-0993

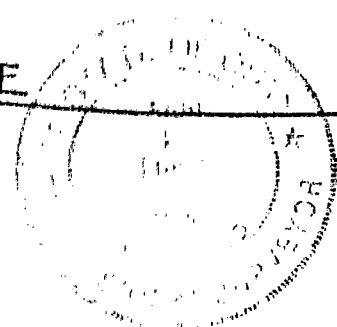
EXHIBIT

0.944 ACRE TRACT

SITUATED IN THE STATE OF OHIO, COUNTY OF FRANKLIN, CITY OF DUBLIN, VIRGINIA MILITARY SURVEY NO. 2419



THE BEARING REFERENCE FOR THIS PLAT IS THE SAME AS DELINEATED ON THE PLAT "TUTTLE CROSSINGS" OF RECORD IN PLAT BOOK 71 PAGE 100 RECORDERS OFFICE FRANKLIN COUNTY OHIO.



HOCKADEN AND ASSOCIATES, INC.
CONSULTING ENGINEERS

By: *John J. Pineda* 12/19/91
REGISTERED SURVEYOR

SCALE 1" = 60'

DATE: 11-21-91
REVISED DATES

39520
ORDER NUMBERS

SURV'D.	DRAWN	CHECKED
	CEL	JLP

