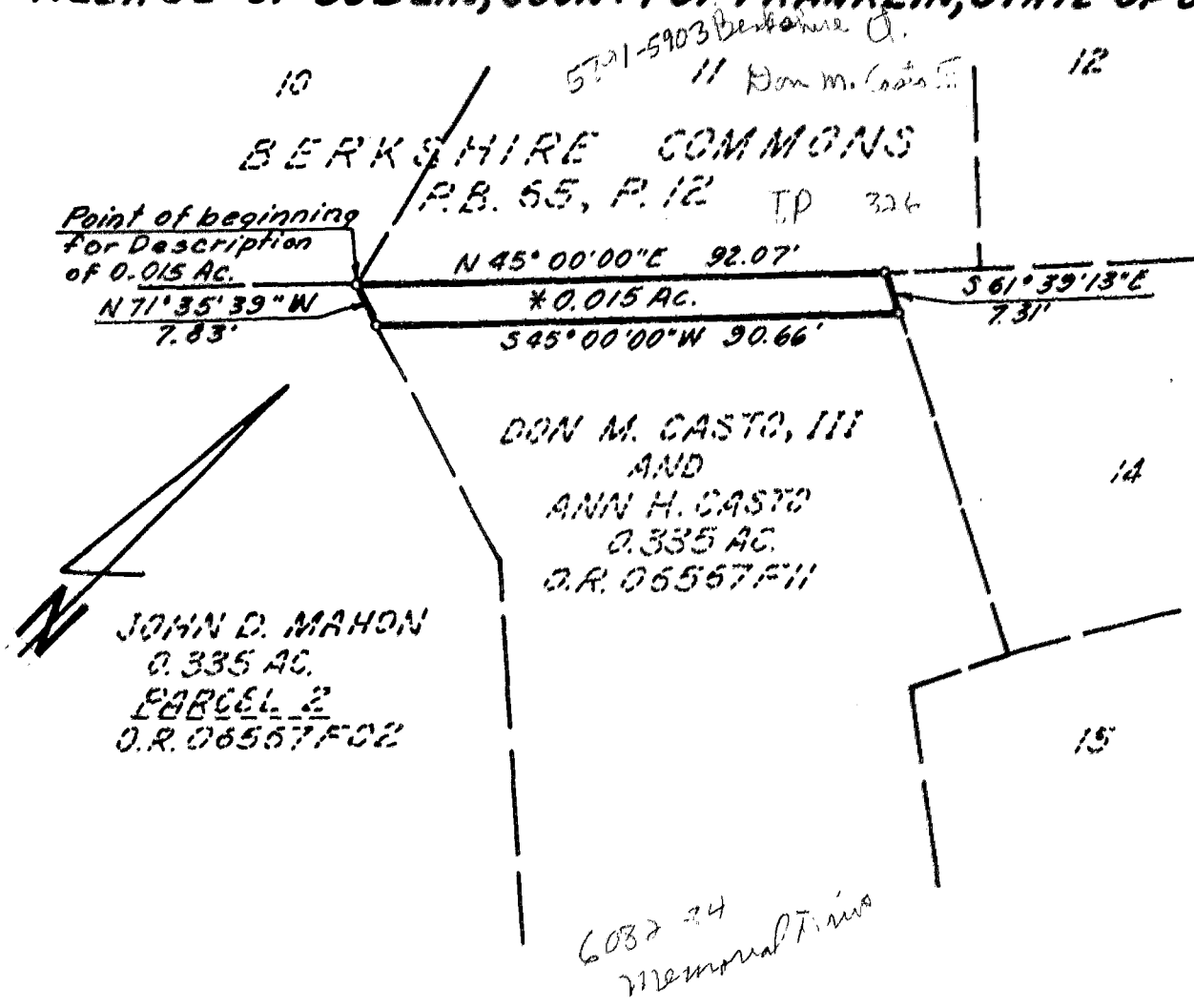


BAUER, DAVIDSON & MERCHANT, INC.

CONSULTING ENGINEERS

255 GREEN MEADOWS DRIVE SOUTH SUITE B P.O. BOX 152 POWELL, OHIO 43065

BOUNDARY SURVEY MAP OF 0.015 ACRE OF LAND LOCATED ON THE NORTHWESTERLY SIDE OF MEMORIAL DRIVE AND SOUTH OF CROMDALE DRIVE, IN THE VILLAGE OF DUBLIN, COUNTY OF FRANKLIN, STATE OF OHIO



* Situated in the State of Ohio, County of Franklin, Village of Dublin, being in Virginia Military Survey No. 2545, containing 0.015 acres of land, more or less, said 0.015 acre being out of that 0.335 acre tract described in the deed to Don M. Casto, III and Ann H. Casto, of record in Official Record 06567 F11, Recorder's Office, Franklin County, Ohio

We hereby certify that the foregoing map was prepared from information obtained from actual field surveys conducted by Bauer, Davidson & Merchant, Inc. in March and April of 1987.

The bearings shown on the foregoing map correspond to the bearings shown on the Dedication Plat of Muirfield Drive and Easements, of record in Plat Book 49, Pages 81, 82, and 83, Recorder's Office, Franklin County, Ohio and in Plat Book 12, Pages 6, 7 and 8, Recorder's Office, Delaware County, Ohio.

BAUER, DAVIDSON & MERCHANT, INC.
CONSULTING ENGINEERS

John W. McCombs
John W. McCombs
Professional Surveyor No. 6661

Scale: 1" = 30'
Order No. 800-87
April 7, 1987

