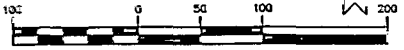


BOUNDARY SURVEY MAP
of 16.509 Ac. Tract of Land located between Justus Road and Interstate Route 270 and West of Augustus Drive, in the City of Grove City, County of Franklin, State of Ohio

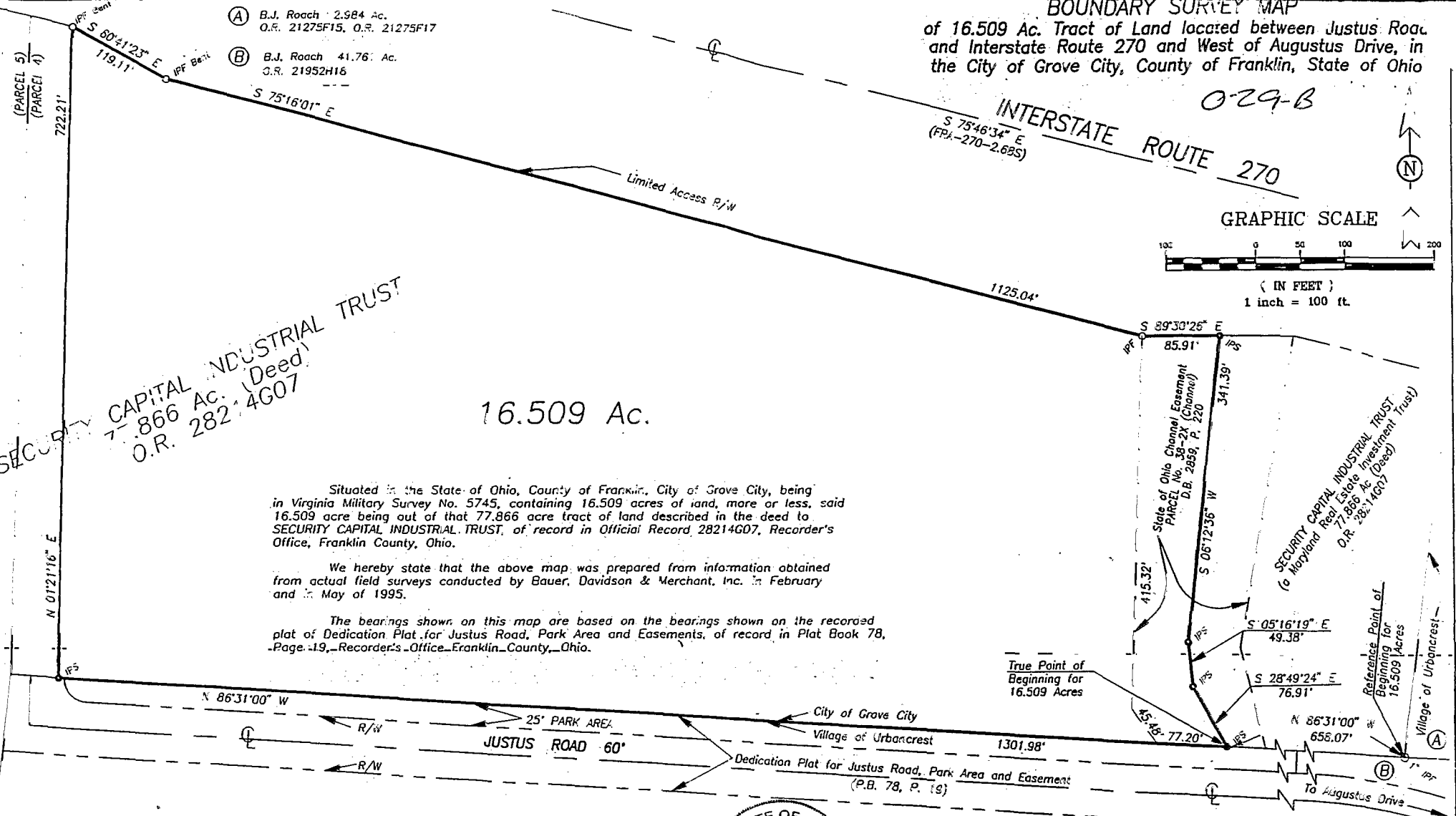
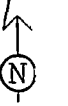
0-29-B

INTERSTATE ROUTE 270

GRAPHIC SCALE



(IN FEET)
1 inch = 100 ft.



16.509 Ac.

Situated in the State of Ohio, County of Franklin, City of Grove City, being in Virginia Military Survey No. 5745, containing 16.509 acres of land, more or less, said 16.509 acre being out of that 77.866 acre tract of land described in the deed to SECURITY CAPITAL INDUSTRIAL TRUST, of record in Official Record 28214G07, Recorder's Office, Franklin County, Ohio.

We hereby state that the above map was prepared from information obtained from actual field surveys conducted by Bauer, Davidson & Merchant, Inc. in February and in May of 1995.

The bearings shown on this map are based on the bearings shown on the recorded plat of Dedication Plat for Justus Road, Park Area and Easements, of record in Plat Book 78, Page 19, Recorder's Office Franklin County, Ohio.

SECURITY CAPITAL INDUSTRIAL TRUST
77.866 Ac. (Deed)
O.R. 28214G07

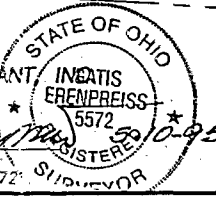
SECURITY CAPITAL INDUSTRIAL TRUST
(to Mapland Real Estate Investment Trust)
O.R. 28214G07

LEGEND

- IPF = 1" solid iron pipe found
- PF = 3/4" solid iron pipe found
- IPS = 3/4" iron pipe set

BAUER, DAVIDSON & MERCHANT
CONSULTING ENGINEERS

BY *Gotis Erenpreiss*
Gotis Erenpreiss
Professional Surveyor No. 5572



BAUER, DAVIDSON & MERCHANT, INC.
Consulting Engineers

255 Green Meadows Drive S.
P.O. Box 370
Powell, Ohio 43065
(614) 846-3393

ID #04 OHCA 1775851 MAY 10, 1995

- 1.) S-60°41'23"E, a distance of 119.11 feet to a 3/4-inch bent iron pipe found;
 - 2.) S-75°16'01"E, a distance of 1125.04 feet to a 3/4-inch iron pipe found;
 - 3.) S-89°30'26"E, a distance of 85.91 feet to a 3/4-inch iron pipe set;
- Thence crossing said 77.866 acre tract, the following three courses and distances:

80 356 925
80 06 925
JACRESOR