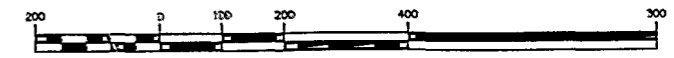
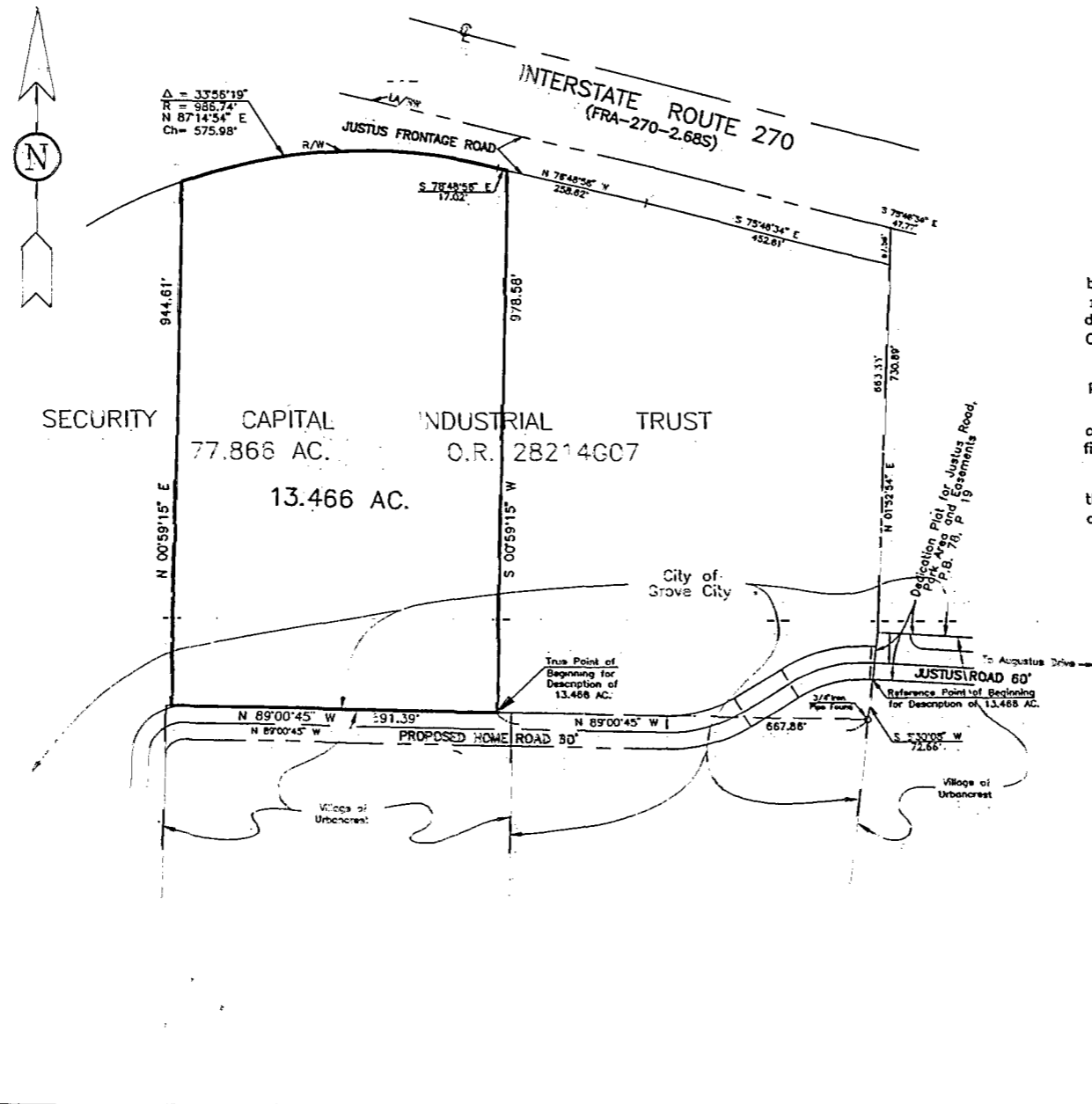


GRAPHIC SCALE JACKSON



(IN FEET)
1 inch = 200 ft. 80 106 925

0-29-B



Situated in the State of Ohio, County of Franklin, City of Grove City, being in Virginia Military Survey No. 5745, containing 13.466 acres of land, more or less, said 13.466 acres being out of that 77.866 acre tract of land described in the deed to Security Capital Industrial Trust, of record in Official Record 28214G07, Recorder's Office, Franklin County, Ohio.

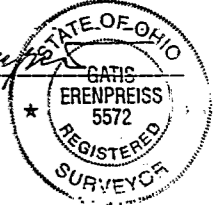
Subject to all rights-of-way, easements and restrictions, if any, of previous record.

We hereby state that the above map was prepared from information obtained partly from existing available records and partly from an actual field survey conducted by Bauer, Davidson & Merchant, Inc. in May of 1995.

The bearings shown on this map are based on the bearings shown on the recorded plat of Dedication Plat for Justus Road, Park Area and Easements, of record in Plat Book 78, Page 19, Recorder's Office, Franklin County, Ohio.

BAUER, DAVIDSON & MERCHANT, INC.
Consulting Engineers

By Gatis Erenpreiss
Gatis Erenpreiss
Professional Surveyor No. 5572



MAP OF A 13.466 ACRE TRACT OF LAND
LOCATED BETWEEN BIG RUN SOUTH ROAD AND AUGUSTUS
DRIVE, SOUTH OF INTERSTATE ROUTE 270, IN THE CITY OF
GROVE CITY, COUNTY OF FRANKLIN, STATE OF OHIO

BAUER, DAVIDSON & MERCHANT, INC.
Consulting Engineers
288 Green Meadows Drive S.
P.O. Box 370
Fremont, Ohio 43085
(614) 846-3320