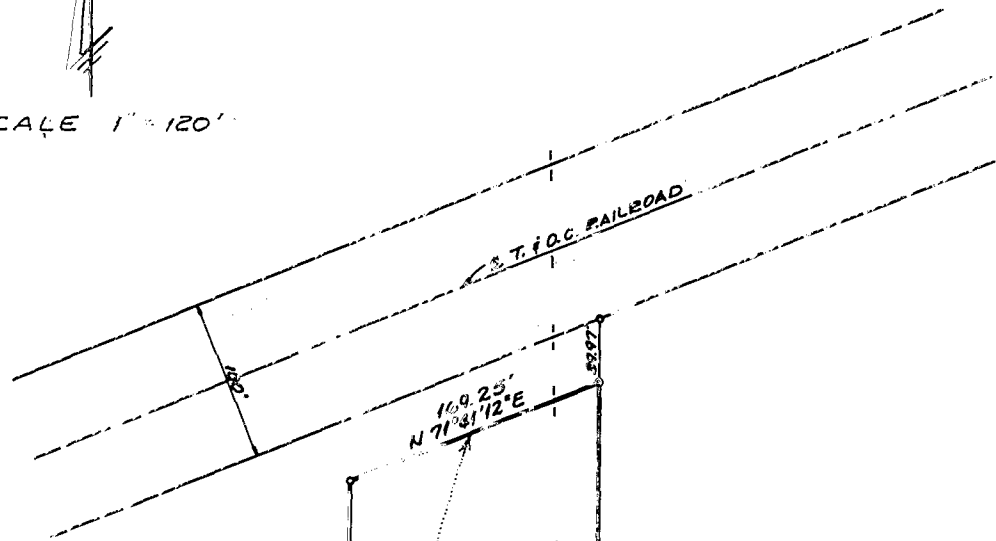




SCALE 1" = 120'



169.25'  
N 71°31'12"E

2.744 AC.

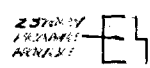
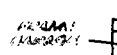
GEORGIA - PACIFIC CORPORATION  
5.114 AC.  
D.B. 2729 PG. 441

EMIL C. KUHNIMHOFF  
3.0 AC.  
D.B. 1274 PG. 161

HAMILTON WELDING COMPANY  
627 AC.  
D.B. 3551 PG. 615

N 100°01'E 226.70'

3°08'55"W 800.66'



COUNTY OF FRANKLIN  
0.363 AC.  
D.B. 975 PG. 413

COUNTY OF FRANKLIN  
0.128 AC.  
D.B. 975 PG. 238

COUNTY OF FRANKLIN  
0.077 AC.  
D.B. 975 PG. 161

N 12°28'46"W  
136.91'

REFUGEE ROAD

**SURVEY OF A 2.744 AC. TRACT**  
IN  
COLUMBUS, OHIO  
FRANKLIN COUNTY  
FOR  
DAVID LASKY

*Robert W. Spence*  
REGISTERED SURVEYOR NO. 61061

PREPARED BY  
SPENCER SHELL ASSOC. INC.  
2840 FISHER RD.  
COLUMBUS, OHIO 43204  
JUNE, 1978

0-53-N

HAMILTON WELDING COMPANY