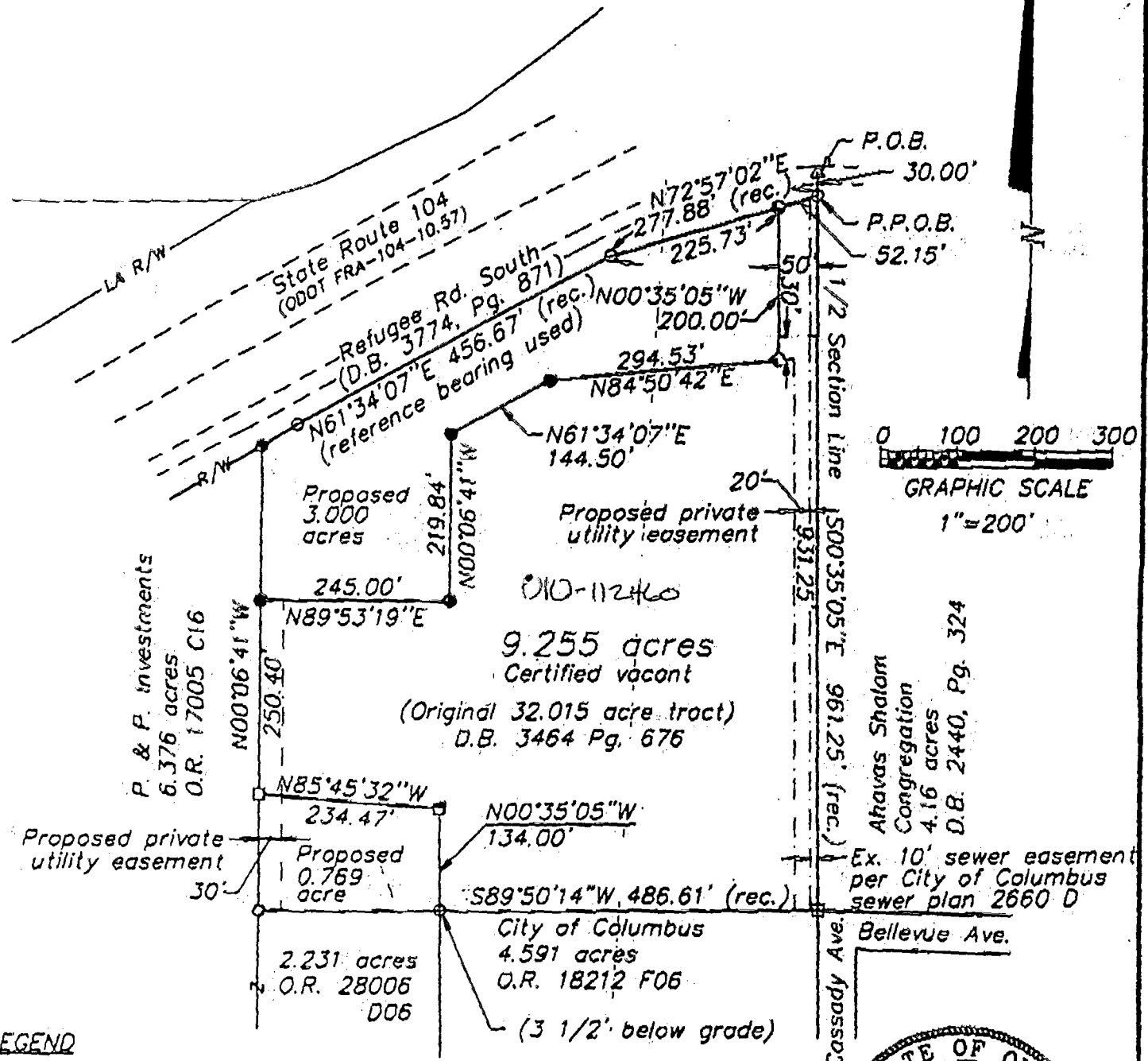


Plat of 9.255 acre tract,  
 part of an original 32.015 acre tract, (D.B. 3464, pg. 676),  
 located in Section 1, Township 4 North, Range 22 West, Congress Lands,  
 in the City of Columbus, Franklin County Ohio  
 for P.J.R.

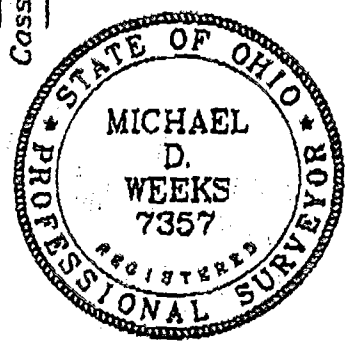
84352975



**LEGEND**

- △ Rail road spike found
  - Iron pin found (5/8")
  - Iron pin set (5/8"x30")
  - Iron pipe found (1 1/4")
  - Iron pipe set (1"x30")
- Basis of bearings from  
 ODOT FRA-104-10.57  
 highway plans

March 25, 1997



MARION  
 DWG  
 0-54-C

PLAT PREPARED BY

**KORDA/NEMETH ENGINEERING, INC.**  
 CONSULTING ENGINEERS  
 1650 WATERMARK DRIVE, SUITE 200 TEL: (614) 487-1650  
 COLUMBUS, OHIO 43215-1094 FAX: (614) 487-8981

We hereby certify that this drawing is representative of a true and accurate survey made by Korda/Nemeth Engineering.

*Michael D. Weeks*  
 Michael D. Weeks - Ohio Registered Surveyor No. 7357