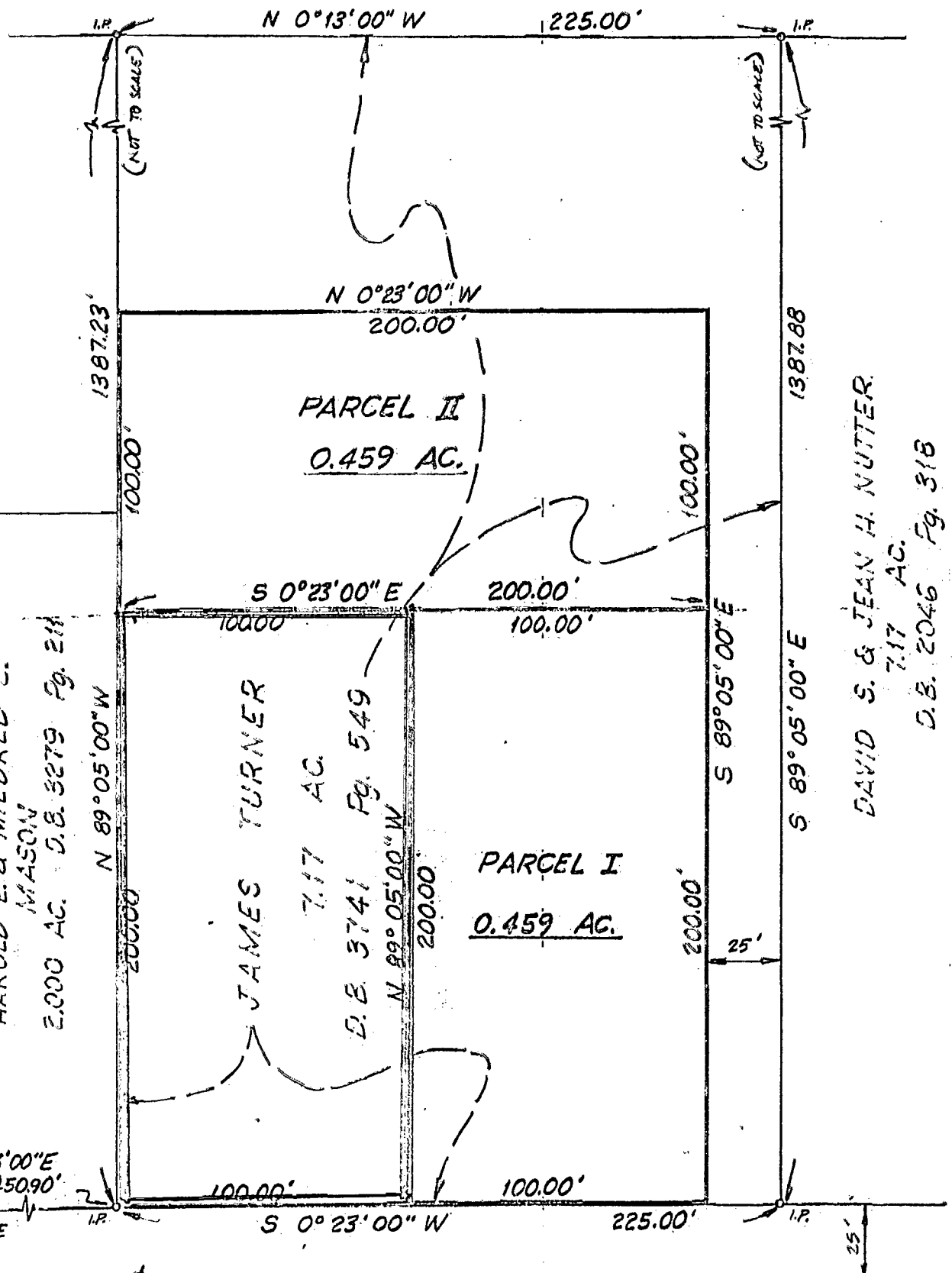


11/18/80 TYP

O.F.A.C.



CLEE ENTERPRISES
16.42 AC.
D.B. 3273 Pg. 531



HAROLD E. & MILDRED L. MASON
2.000 AC. D.B. 3279 Pg. 211

JAMES TURNER
7.17 AC.
D.B. 3741 Pg. 549

DAVID S. & JEAN H. NUTTER.
7.17 AC.
D.B. 2046 Pg. 318

N 0°23'00\"/>

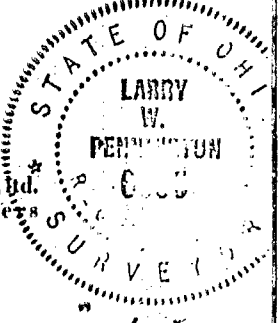
CASSADY AVE.

SURVEY OF
0.459 & 0.459 ACRE TRACTS
SEC. 1, TWP. 4, R-22, CONGRESS LANDS
CITY OF COLUMBUS, OHIO

For
JAMES TURNER

SCALE 1" = 50' OCT., 1980

r. d. zande & associates, llc.
consulting engineers



Larry W. Pennington

DRN LWP
CKD LWP
08 921-46

056258