

HARVEY TWA  
C-54-C

Plat showing Zoning Case #90-159,  
Subareas 1 (3.771 Ac.), 2 (17.861 Ac.), & 3 (4.591 Ac.)  
located at 2323 Refugee Road South,  
part of an original 32.015 Acre tract (D.B. 3464, Pg. 676),  
located in Township 4, Range 22, Congress Lands,  
in the City of Columbus, Franklin County, Ohio

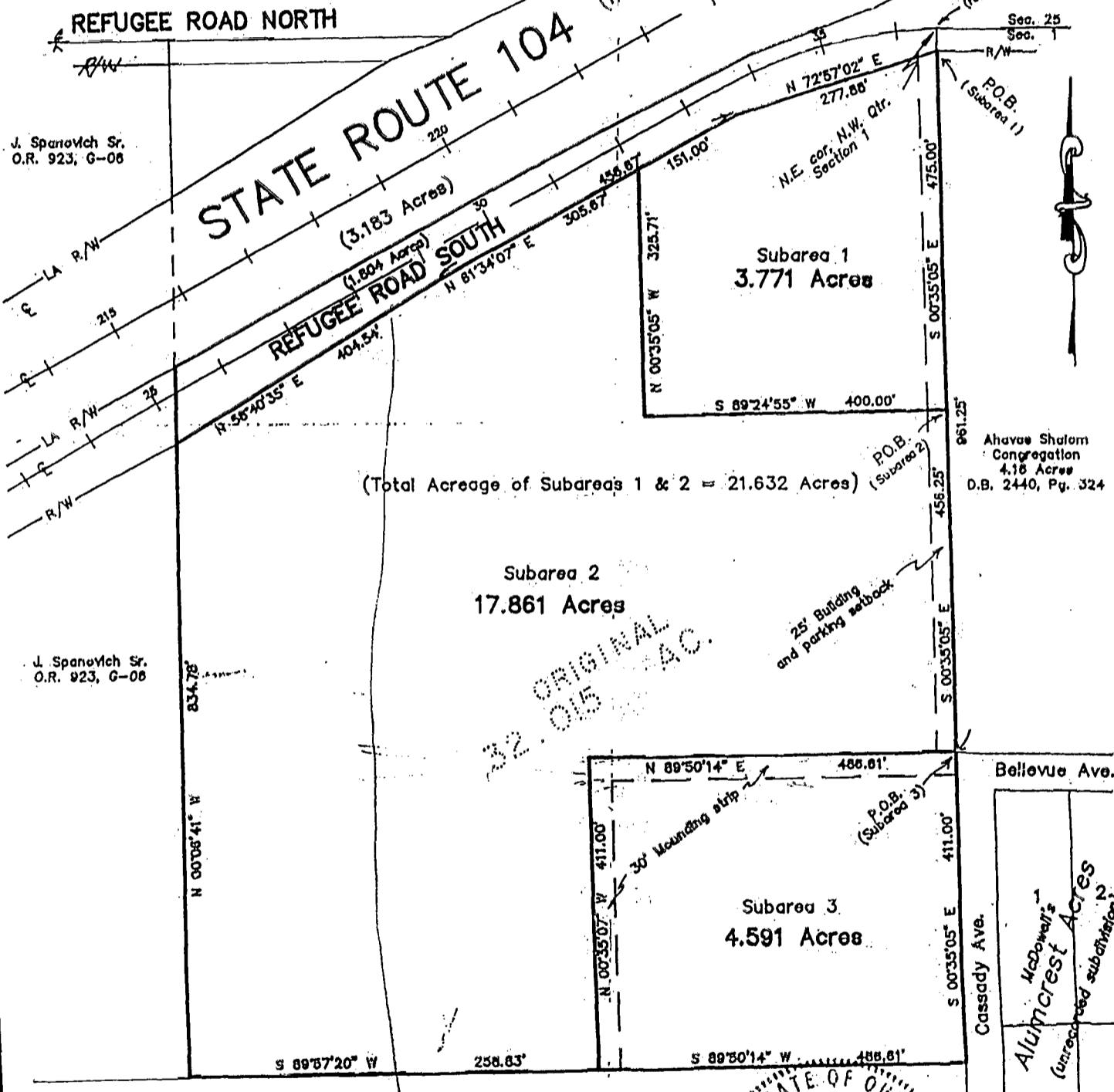
for  
**PJR**  
An Ohio Partnership

0 100 200 400

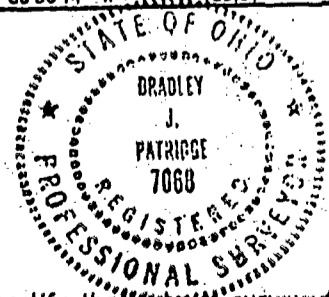


Scale 1"=200'  
February 26, 1991

Basis of bearings from  
FRA - 104 - 10.57



32.015 AC.  
ORIGINAL



I hereby certify that I have surveyed the property described in the foregoing title caption, and that said survey and plat are accurate and correct to the best of my knowledge. Easements, restrictions, and rights-of-way not located, unless noted.

*Bradley J. Patridge*  
Professional Surveyor No. 7068

PREPARED BY  
**R. T. PATRIDGE AND ASSOCIATES**  
PROFESSIONAL SURVEYORS AND ENGINEERS  
8480 DUBLIN ROAD  
POWELL, OHIO 43085  
FAX (614)-881-6038  
TEL (614)-881-5575



84256975

C-54-C

Franklin Co. Auditor's Map C-54-C

Believee Ave.  
Cassady Ave.  
Allumcrest Acres  
(unrecorded subdivision)

Ahava Shalom  
Congregation  
4.18 Acres  
D.B. 2440, Pg. 324

(Total Acreage of Subareas 1 & 2 = 21.632 Acres)

Subarea 1  
3.771 Acres

Subarea 2  
17.861 Acres

Subarea 3  
4.591 Acres

J. Spanovich Sr.  
O.R. 923, G-08

J. Spanovich Sr.  
O.R. 923, G-08

A.J. Angelo  
6.444 Acres  
D.B. 2248, Pg. 330