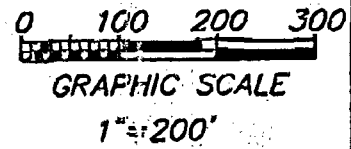
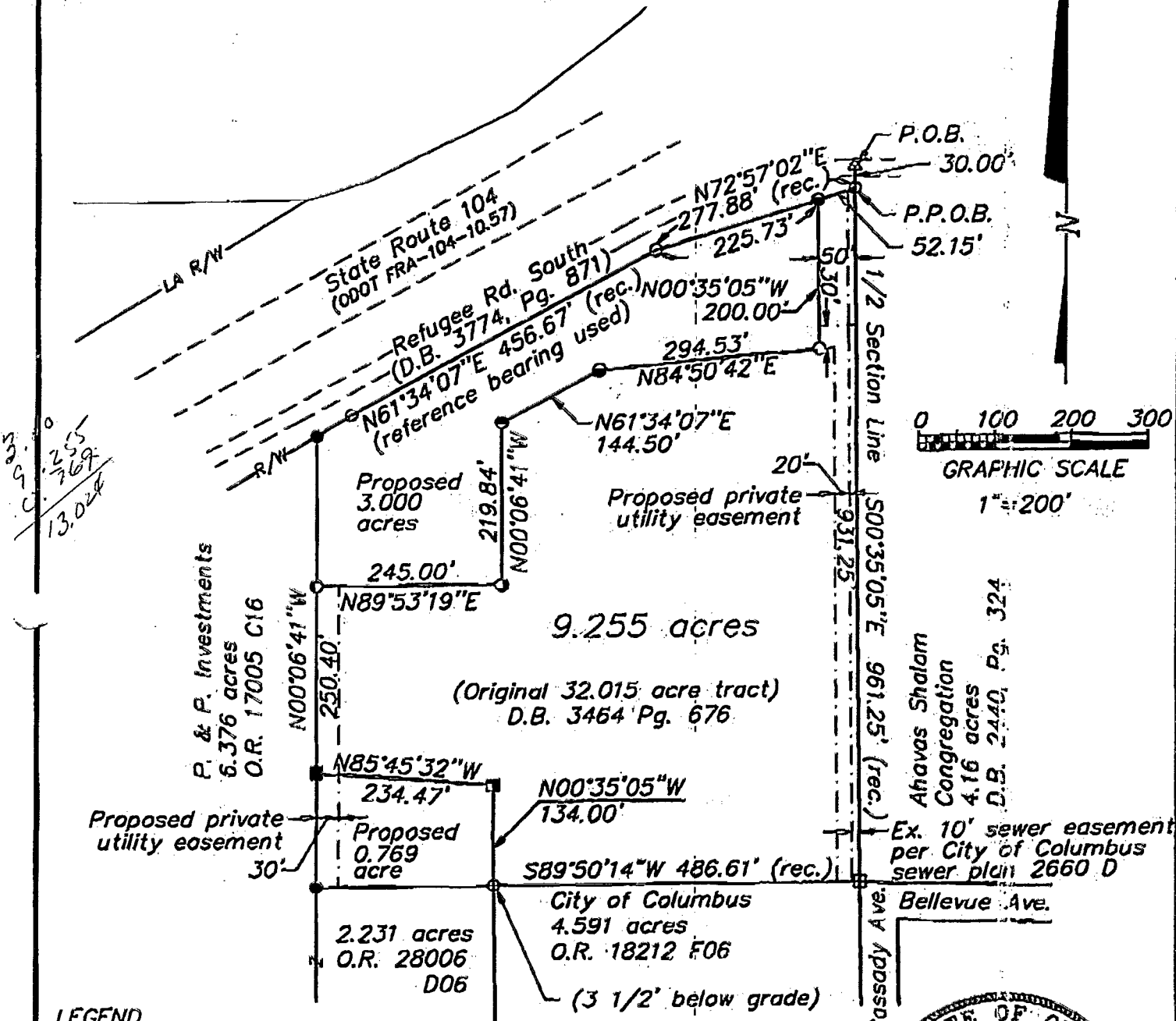


Plat of 9.255 acre tract,
 part of an original 32.015 acre tract, (D.B. 3464, pg. 676),
 located in Section 1, Township 4 North, Range 22 West, Congress Lands,
 in the City of Columbus, Franklin County Ohio
 for P.J.R.

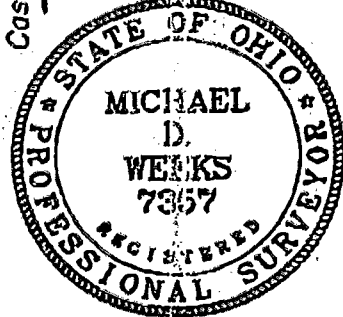


LEGEND

- △ Rail road spike found
- Iron pin found (5/8")
- Iron pin set (5/8"x30")
- Iron pipe found (1 1/4")
- Iron pipe set (1"x30")

Basis of bearings from
 ODOT FRA-104-10.57
 highway plans

March 18, 1997



We hereby certify that this drawing is representative of a true and accurate survey made by Korda/Nemeth Engineering.

Michael D. Weeks
 Michael D. Weeks ~ Ohio Registered Surveyor No. 7357

PLAT PREPARED BY
KORDA/NEMETH ENGINEERING, INC.
 CONSULTING ENGINEERS
 1650 WATERMARK DRIVE, SUITE 200 COLUMBUS, OHIO 43215-1094
 TEL (614) 487-1650 FAX (614) 487-6981

84 356 975