

0-54-C

WARRON TWP.

Plat #104

City Monu  
REFUGEE Rd.

PL # 75735-45

N 59° 16' 40" E  
City Monu 18+00  
E E RELOCATED

N 59° 16' 40" E  
112.16'  
5/8" REBAR Fd.

PARKER & Gladys Dunigan  
14477-C-05

100° 05' 21" W ~ 450.39'

1.0598 AC.

5 00° 03' 33" E ~ 507.75'

JACK & BONNIE EVANS  
1.45 AC.  
OR-30201-J-06

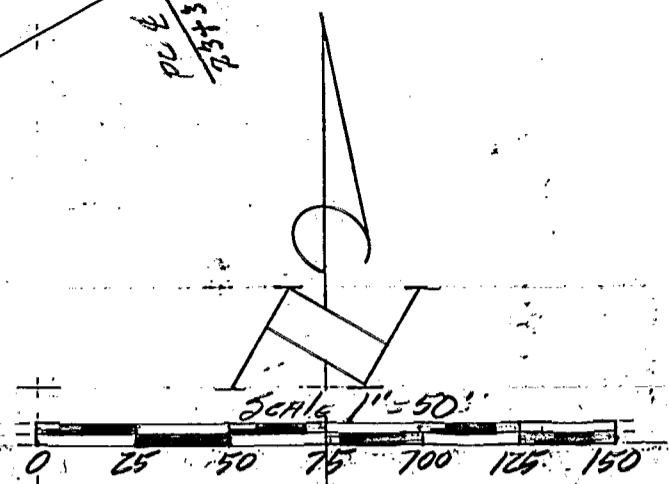
JACK & BONNIE EVANS  
1.942 AC.  
30201-J-06

172.00'  
Clyde Rowc Fd.  
Reminder 7<sup>th</sup> AC  
OR-27750-A-17

1/2" IP Fd.  
96.24'  
N 89° 57' 58" W

JACK & BONNIE EVANS

16.42 AC.  
OR-30201-J-06



Basis of Bearings:  
E REFUGEE ROAD AS PER  
PLAN N 59° 16' 40" E. FROM  
ODOT - FRA-104-10.57

SURVEY OF 1.0598 ACRES  
in the NW 1/4 SEC 1, Twp. 4, Rge. 22.  
City of Columbus, Franklin Co.,  
Ohio: FOR

PARKER & Gladys Dunigan



**HAINES SURVEYORS**  
354 Kessler Street  
Groveport, Ohio 43125  
Phone: 837-2181

I hereby certify that the plat shown hereon was performed from an actual field survey, under my supervision and that said plat correctly represents said survey.  
DATE 5-29-96 SIGNED *Louis J. Haines*

84356975

5-1890