

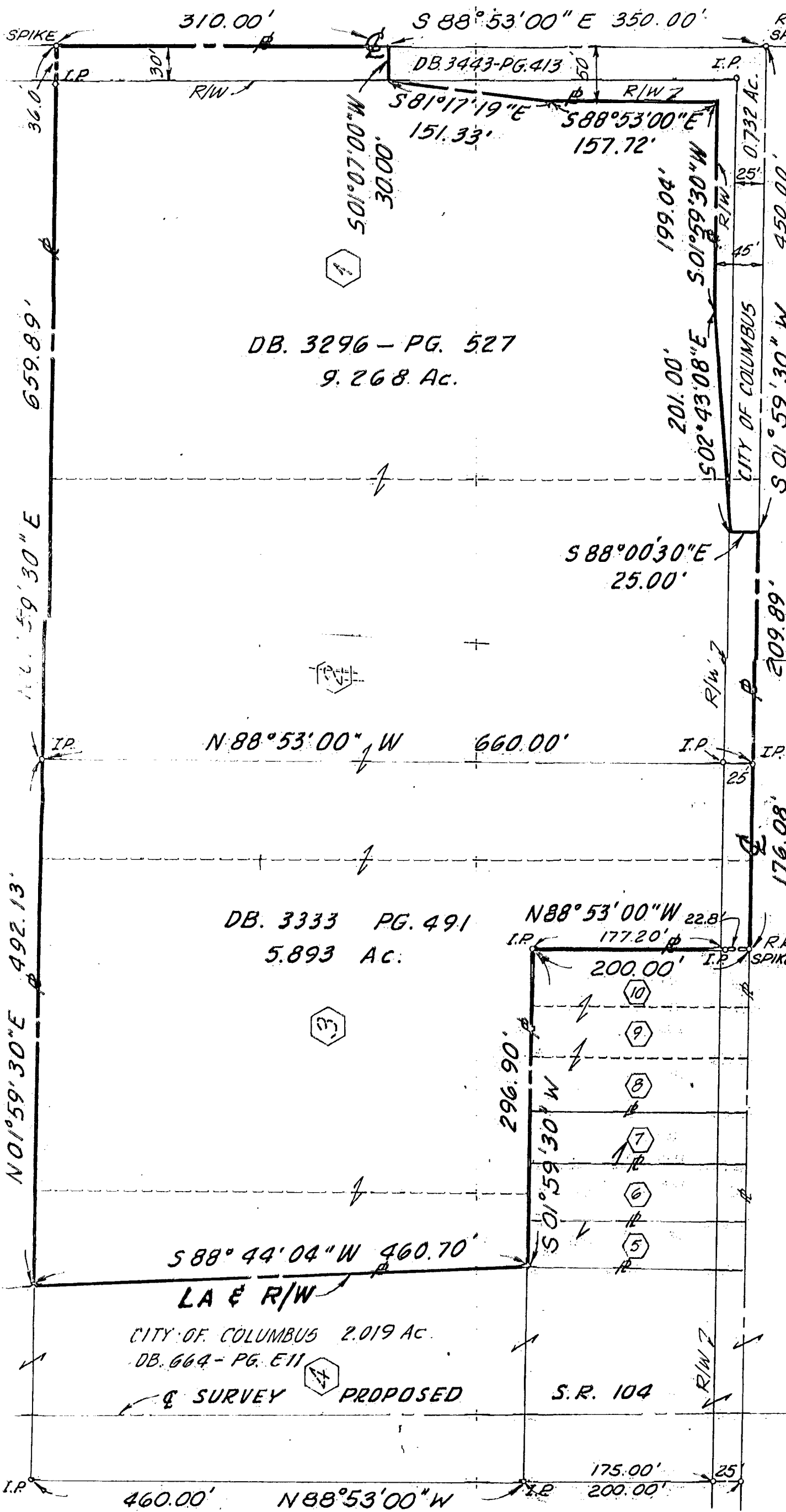
REFUGEE ROAD 60'

REFUGEE LANDS

SEC 26 - T5 - R22

SEC 2 - T4 - R22

CONGRESS LANDS



ADJACENT OWNERS IN THE FOLLOWING UNRECORDED PLAT, SUB DIVISION OF ELSON R. PARKER SURVEYING WILBERT & DOROTHY THOMPSON DB. 2934-PG. 630, 0.688 AC.

CLYDE BENNETT & CAROL LYNN DB. 5407-PG. 618, 0.46 AC.

GEORGE M. SEBERIG DB. 3545-PG. 386, 0.229 AC.

PLAT FROM SURVEY AND

15.161 AC.

PARTS OF LOTS No. 1, 2, 3, CLICKINGER PARTITION, PARCEL SEC. 2, TWP 4, R-22, CONGRESS LANDS, CITY OF COLUMBUS, FRANKLIN COUNTY, MISSOURI

FOR

CARL V. TEETE

Scale: 1" = 100'

THE JENNINGS - L... CIVIL ENGINEERS & ARCHITECTS COLUMBUS, MISSOURI

