

# BOUNDARY SURVEY PLAT

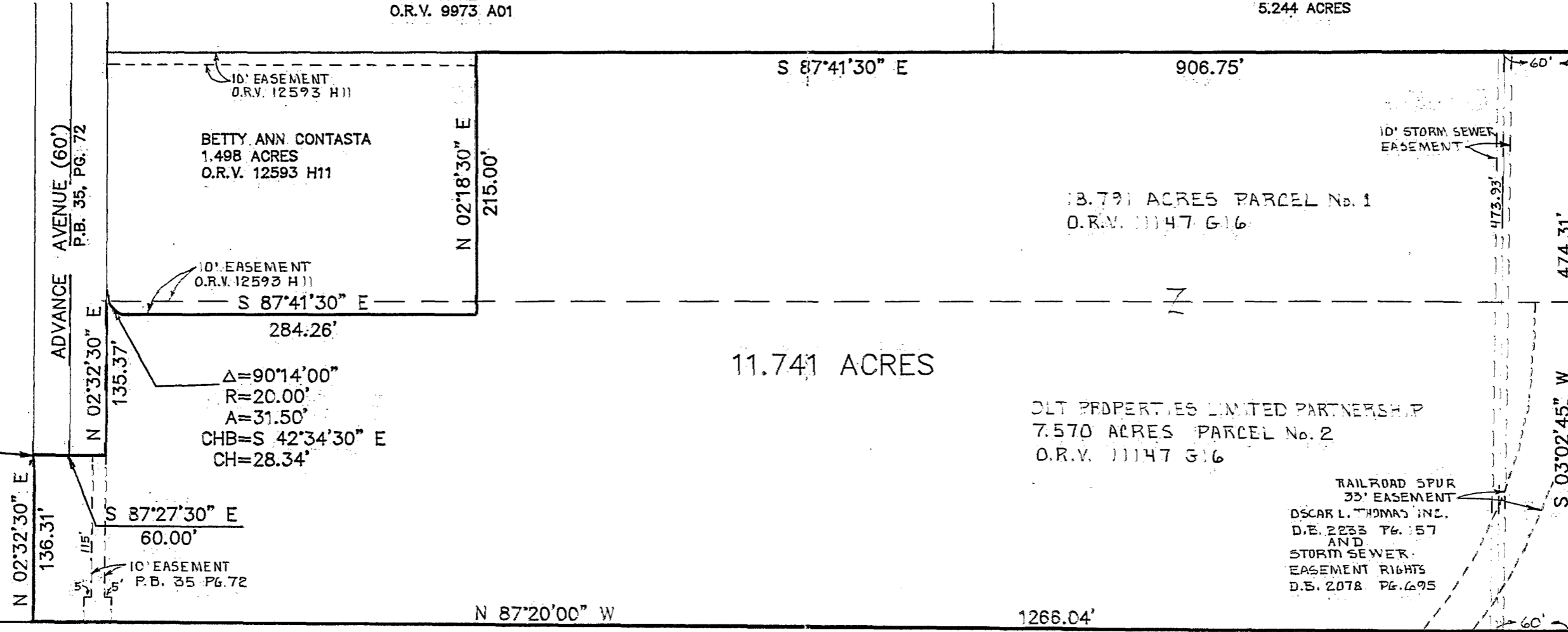
SITUATED IN THE STATE OF OHIO, COUNTY OF FRANKLIN, CITY OF COLUMBUS,  
HALF SECTION 38, SECTION 26, TOWNSHIP 5, RANGE 22, REFUGEE LANDS.

KEYSTONE CARBON COMPANY  
6.692 ACRES  
O.R.V. 9973 A01

O.L.T. PROPERTIES  
D.B. 3773, PG. 153  
5.244 ACRES

BOARD OF COUNTY COMMISSIONERS  
D.B. 3598, PG. 392, 6.792 AC.

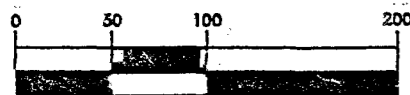
ADVANCE AVENUE (60')  
P.B. 35, PG. 72



POINT OF BEGINNING

$\Delta = 90^{\circ}14'00''$   
 $R = 20.00'$   
 $A = 31.50'$   
 $CHB = S 42^{\circ}34'30'' E$   
 $CH = 28.34'$

## GRAPHIC SCALE



( IN FEET )  
1 inch = 100 ft.

RELIABLE TRUCK PARTS  
O.R.V. 07970 C 13  
O.R.V. 07970 C 15  
14.136 ACRES

THE BEARING REFERENCE FOR THIS BOUNDARY SURVEY  
PLAT IS THE SAME AS DELINEATED ON THE RECORD  
PLAT "DEDICATION PLAT OF EXTENSION OF ADVANCE  
AVENUE" OF RECORD IN PLAT BOOK 35, PAGE 72,  
RECORDER'S OFFICE, FRANKLIN COUNTY, OHIO.

REVISED 5-15-92 : ADDED EASEMENTS



THE FORE GOING BOUNDARY SURVEY PLAT WAS  
PREPARED BY HOCKADEN AND ASSOCIATES, INC.,  
FROM AN ACTUAL FIELD SURVEY MADE IN AUGUST  
1988.

HOCKADEN AND ASSOCIATES, INC.  
CONSULTING ENGINEERS

*John L. Price* 4/21/92  
JOHN L. PRICE, P.S. 7159