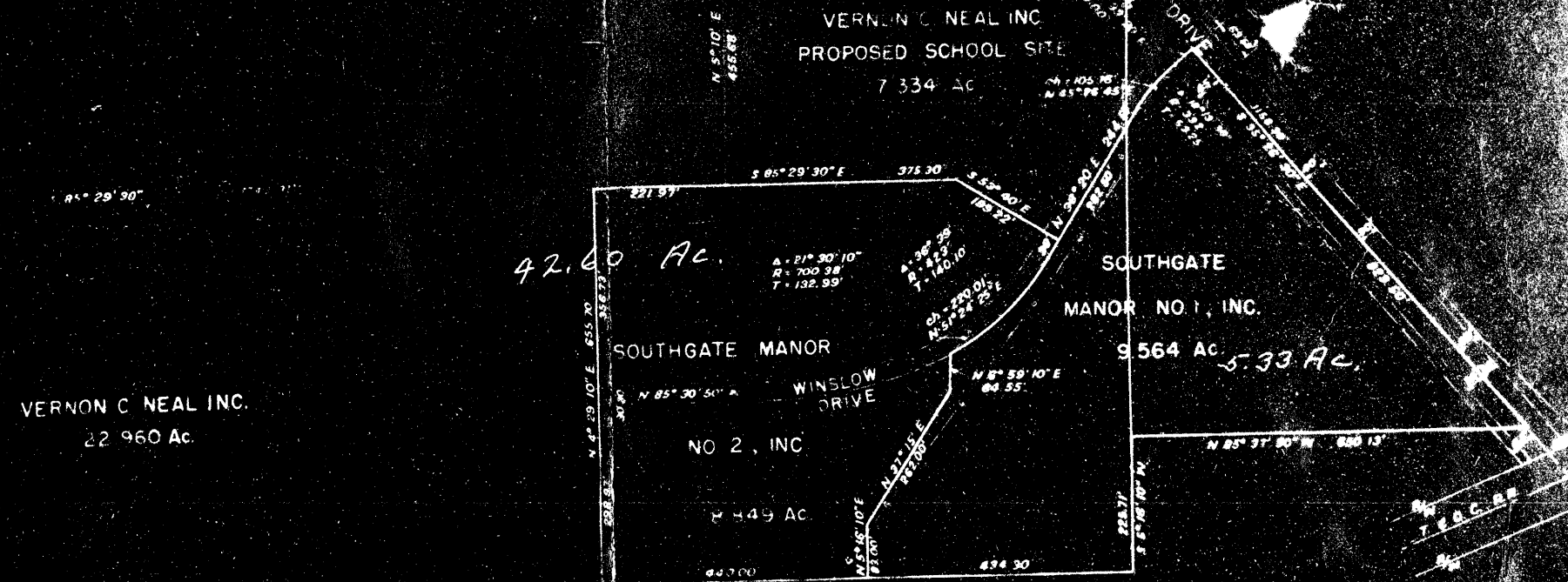


112348
115173

NOTE: Alum Creek Drive shown on contract drawings for improvement of Alum Creek Drive Section B Ohio Dept. of Highways Project No. 3-1206(1)



VERNON C. NEAL INC.
22.960 Ac.

42.60 AC.

SOUTHGATE
MANOR NO. 1, INC.
9.564 AC. 5.33 AC.

The undersigned certify to The Louisville Title Ins. Co., Federal Housing Adm., Federal National Mortgage Ass'n., and The Chase Manhattan Bank, Mortgages, that the within is a true and correct plat of the subject premises made by inspection and survey of the undersigned.

LEGEND

INCORPORATION BOUNDARY

SOUTHGATE MANOR

VERNON C. NEAL INC.

SCA 1-1-1000
H. G. DILL
JANUARY 27, 1958
CONSULTING ENGINEERS

Registered Surveyor