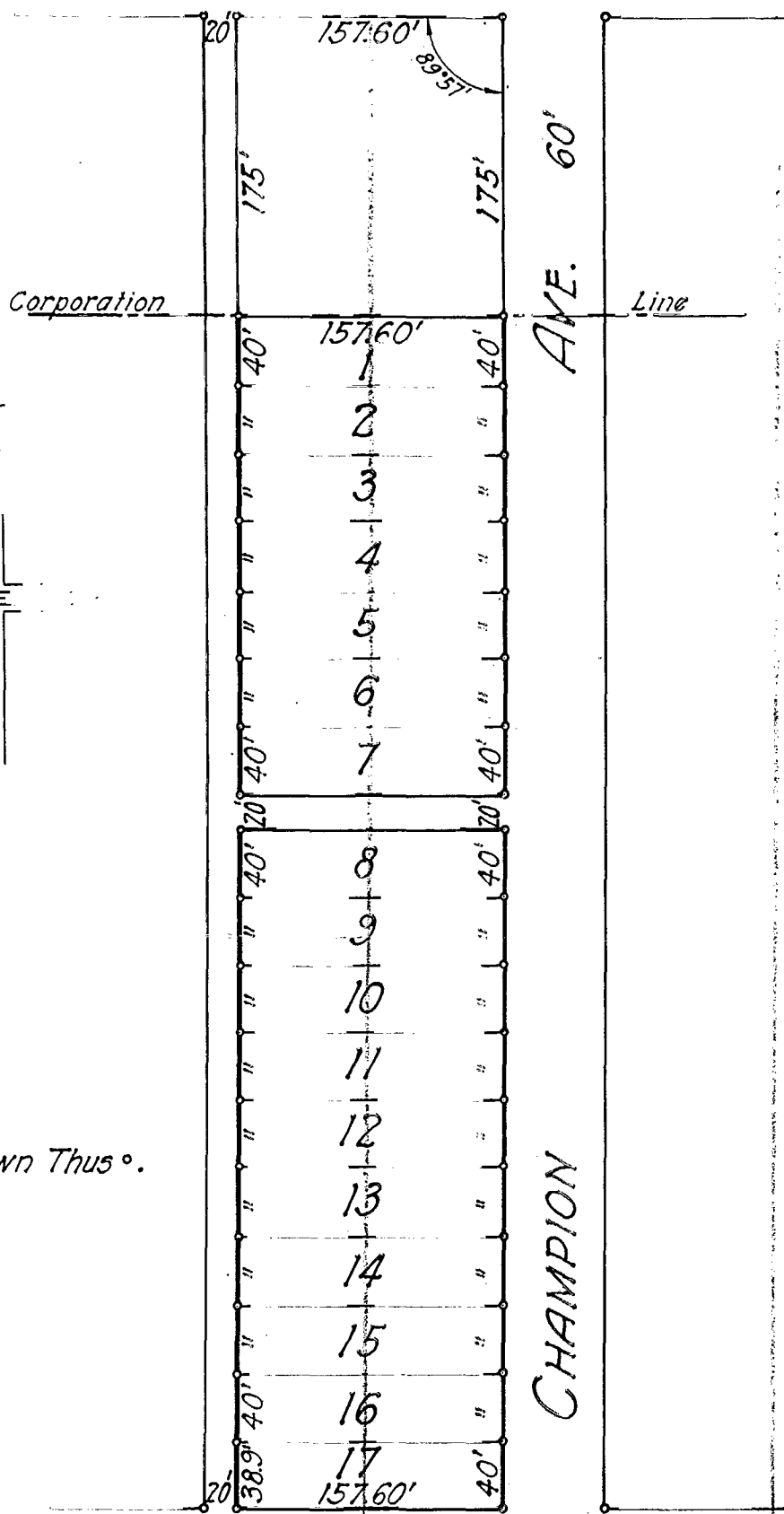


N 16

FREBIS AVE. 50'



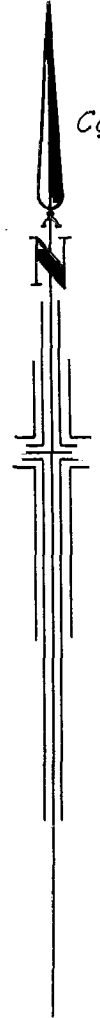
Corporation

Line

AVE. 60'

CHAMPION

JENKINS AVE. 50'



Iron Pins Shown Thus °.

PROPERTY OF
 HARRY C. MERION
 COLUMBUS, OHIO
 SCALE 1"=100'-JULY 23, 1940

THE JENNINGS-LAWRENCE CO.
 CIVIL & MUNICIPAL ENGINEERS

BY S. L. Lawrence
 REGISTERED SURVEYOR

8320 045