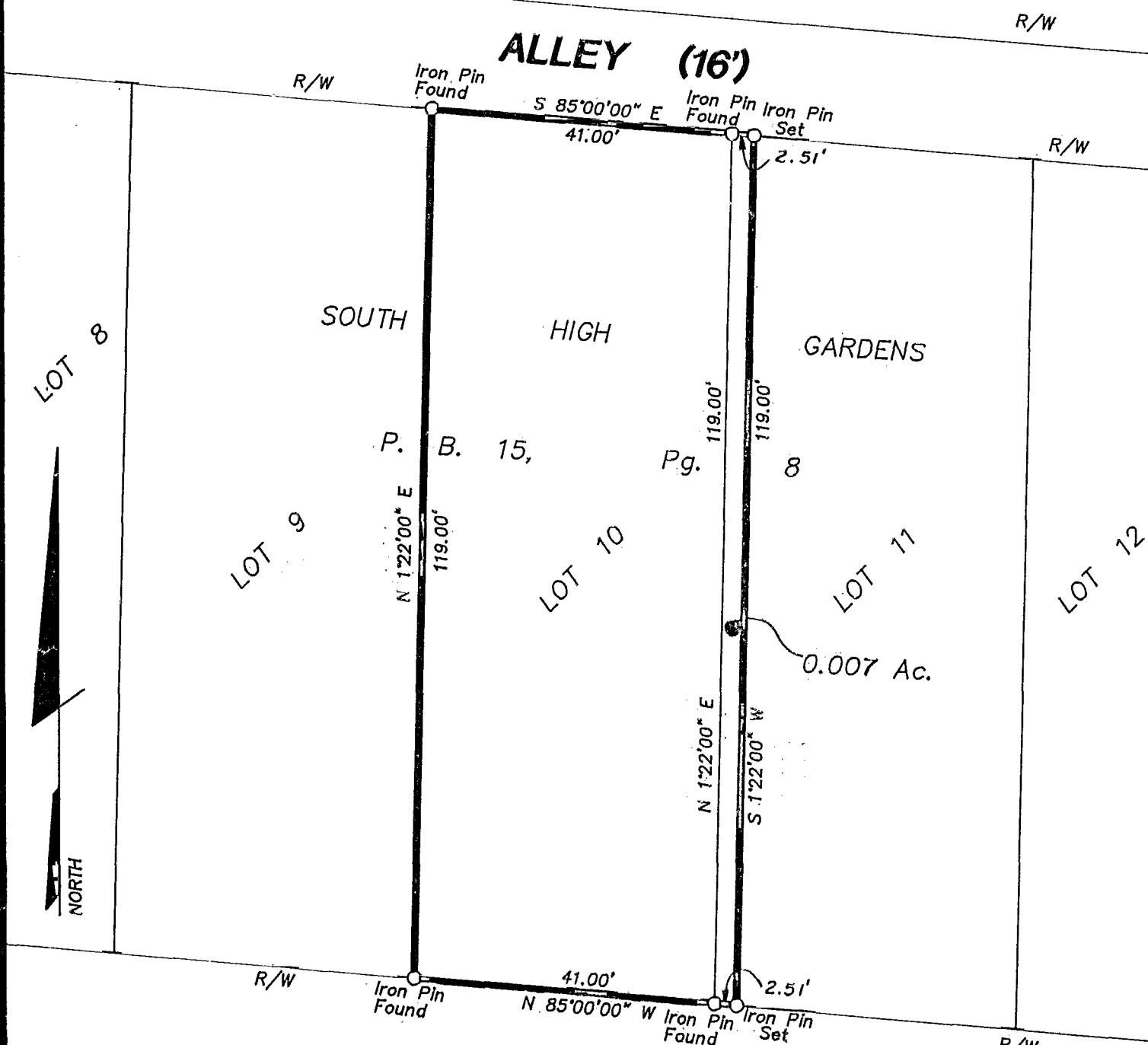


182856950
N-14

SURVEY OF PART OF LOT 11

SOUTH HIGH GARDENS

CITY OF COLUMBUS, FRANKLIN COUNTY, OHIO



DELRAY ROAD (50')

Surveyed & Platted
By
EVANS, MECHWART, HAMBLETON, & TILTON INC.
CONSULTING ENGINEERS AND SURVEYORS
170 MILL STREET
GAHANNA, OHIO 43230
614/471-5150

By Thomas D. Sibbalds
Thomas D. Sibbalds
Registered Surveyor No. 5908

SCALE 1" = 20'
NOVEMBER 2, 1993
Revised Jan. 7, 1994

NOTE:
The bearings shown hereon are based on the same meridian as the easterly right-of-way line of South High Street (S 1° 22' 00" W) on plat of record in Plat Book 15, Page 8.

GRAPHIC SCALE 1" = 20'