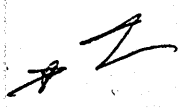
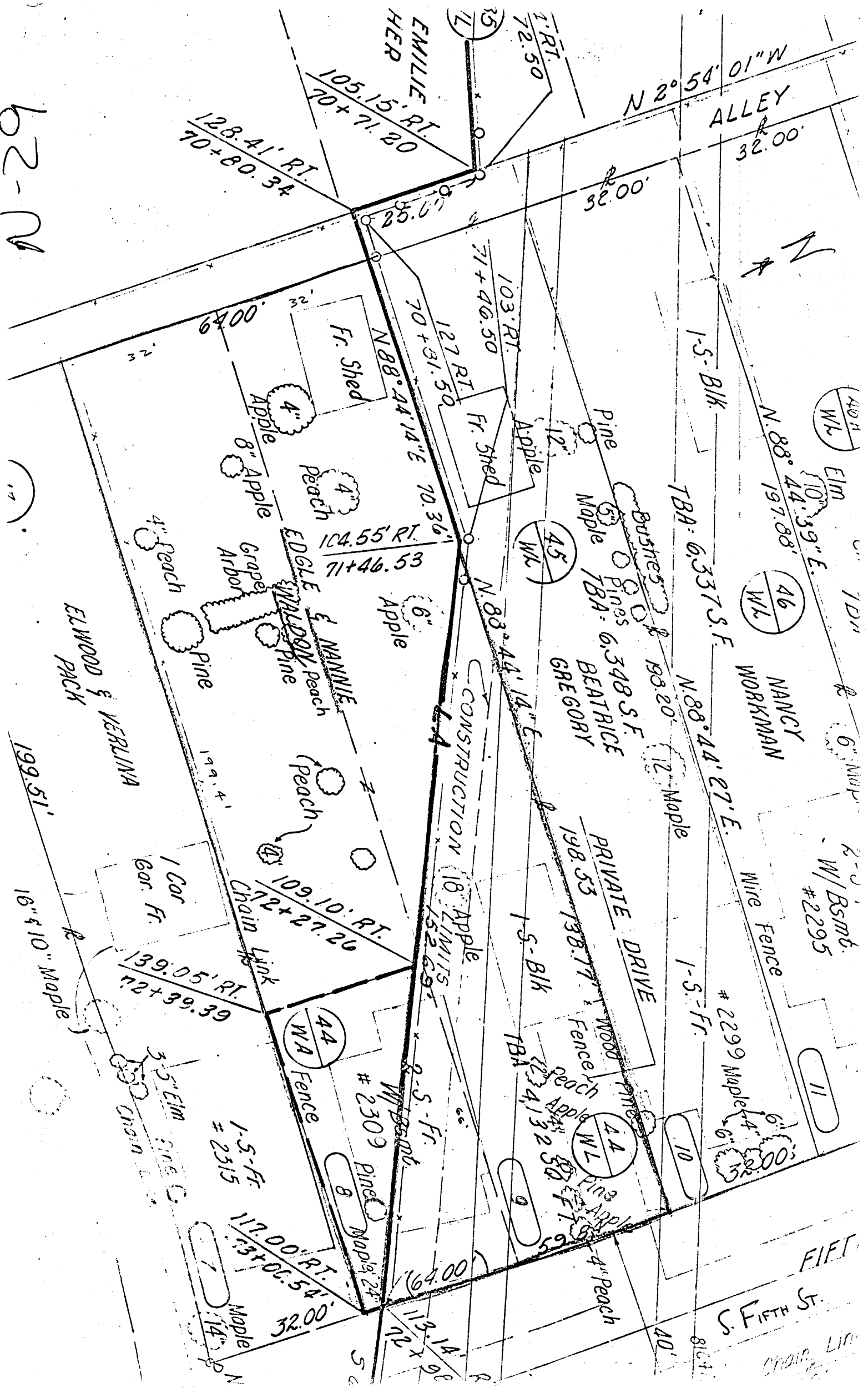


62-N



ELWOOD & VERLINA
PACK

EMILIE HERP
105.15' RT.
70 + 71.20
128.41' RT.
70 + 80.34

N 2° 54' 01" W
ALLEY
32.00'

40' WL
EIM
10' 39" E
N. 88° 44' 39" E
197.88'

46' WL
NANCY WORKMAN

W/BSMT. #2295

Wire Fence #2299 Maple

11

S. FIFTH ST.

CHAIN LINK

1-5-Blk.

TBA: 6.337 S.F.

N. 88° 44' 27" E.

1-5-Fr.

10

40'

Bushes
Pines
Maple
TBA: 6.348 S.F.

BEATRICE GREGORY

PRIVATE DRIVE
198.53
138.77'

1-5-Blk

24' WL
Pine
Apple

9

1. RT.
72.50

103. RT.
71 + 46.50

Apple
12'

45' WL

N. 88° 44' 14" E

CONSTRUCTION
18' Apple

1-5-Blk

23' 4' 32' 50' FT.

64.00'

EMILIE HERP
105.15' RT.
70 + 71.20

25.6'

127 RT.
70 + 31.50

Fr. Shed
Apple
6"

Apple

N. 88° 44' 14" E

CONSTRUCTION
18' Apple

2-5-Fr.

W/BSMT. #2309
Pine
Maple

113' 14" 6'

EMILIE HERP
105.15' RT.
70 + 71.20

25.6'

Fr. Shed
Apple
4"

8" Apple
4" Peach

Apple

N. 88° 44' 14" E

CONSTRUCTION
18' Apple

1-5-Fr. #2315

117.00' RT.
13.50' 0.54'

32.00'

EMILIE HERP
105.15' RT.
70 + 71.20

25.6'

Fr. Shed
Apple
4"

8" Apple
4" Peach

Apple

N. 88° 44' 14" E

CONSTRUCTION
18' Apple

1-5-Fr. #2315

117.00' RT.
13.50' 0.54'

32.00'

EMILIE HERP
105.15' RT.
70 + 71.20

25.6'

Fr. Shed
Apple
4"

8" Apple
4" Peach

Apple

N. 88° 44' 14" E

CONSTRUCTION
18' Apple

1-5-Fr. #2315

117.00' RT.
13.50' 0.54'

32.00'

62-N

70-178