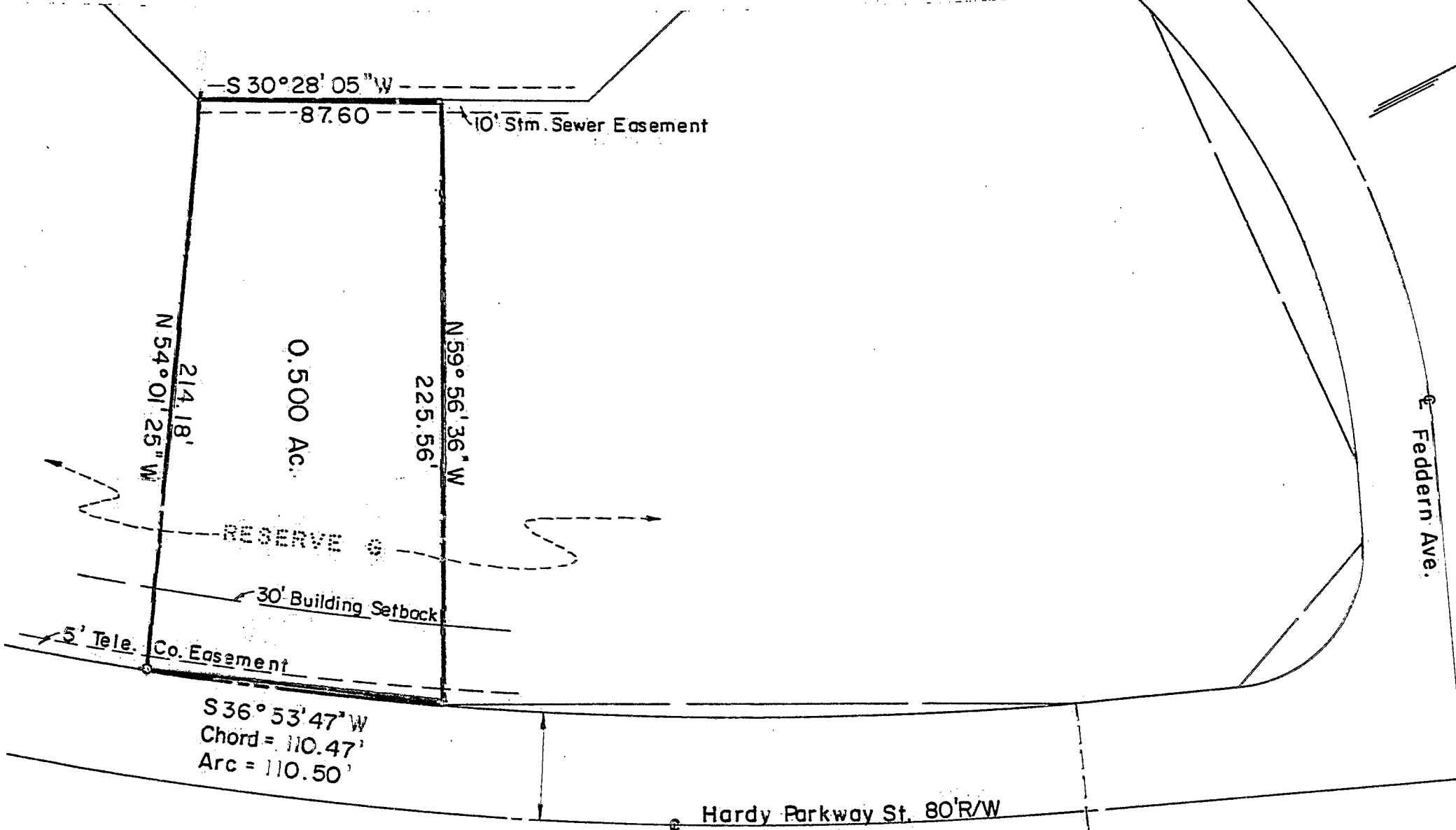


SURVEYED PLAT

Denotes Iron Pins
Scale 1" = 50'

Total Acreage 0.500 Ac.

County Book
187606950
M-206-D



FRANK ROAD INDUSTRIAL PARK NC3
State of Ohio
Franklin County, City of Columbus
V.M.S. 1454

This is to certify that this is a true and accurate plat of a Survey made by me for and at the instance of Frank Road Industrial Park Inc.

JONES-STUCKEY, LTD.

Civil Engineers

Reg. Surveyor No. 4992

March 1975

M-206-D