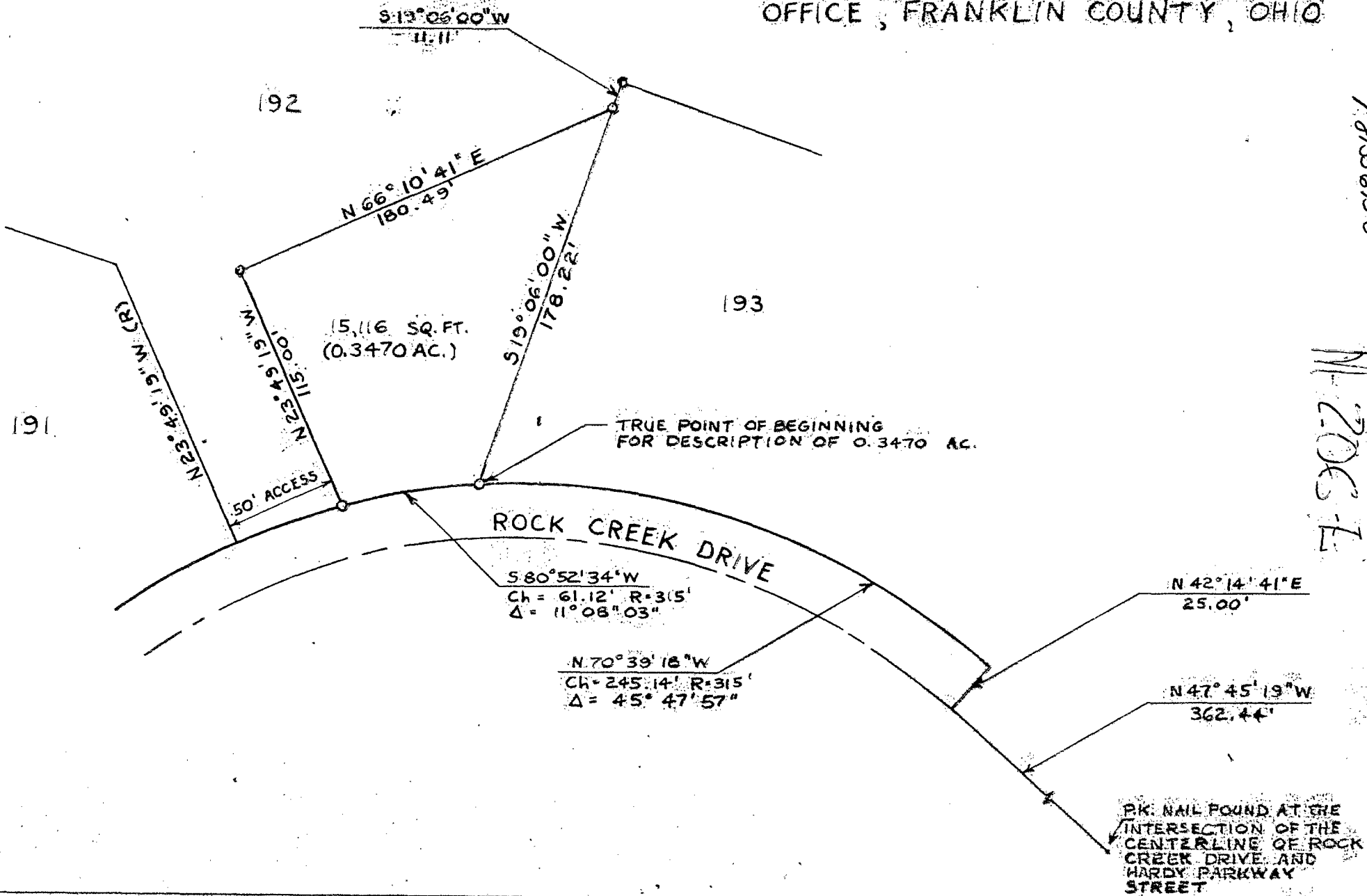


BOUNDARY SURVEY MAP OF 0.3470 AC.
 OF LAND OUT OF 3.913 AC. OF LAND
 REFERRED TO AS LOT 192, WILLOW
 CREEK SECTION 3, OF RECORD IN
 PLAT BOOK 50, PAGE 118, RECORDER'S
 OFFICE, FRANKLIN COUNTY, OHIO

181356950

M-2006-F



We hereby certify that this map was prepared from information obtained from an actual field survey conducted in April, 1984, and that said map is correct. The bearings shown on this map correspond to the bearings shown on the recorded plat of Willow Creek Section 3, of record in Plat Book 50, Page 118, Recorder's Office, Franklin County, Ohio.

JOHN HANCOCK & ASSOC.
 Consulting Engineers

6161 Busch Blvd., Columbus, Ohio 43229
 (614) 892-2357

BY *John Hancock*
JOHN HANCOCK
 Registered Surveyor No. 6918

LEGEND:

IRON PIPE (FOUND)
 5/8" DIAM. IRON PIN (SET)

IRON PIPE (FOUND)
 5/8" DIAM. IRON PIN (SET)



Graphic Scale
 1" = 60'
 April 24, 1984

1984