

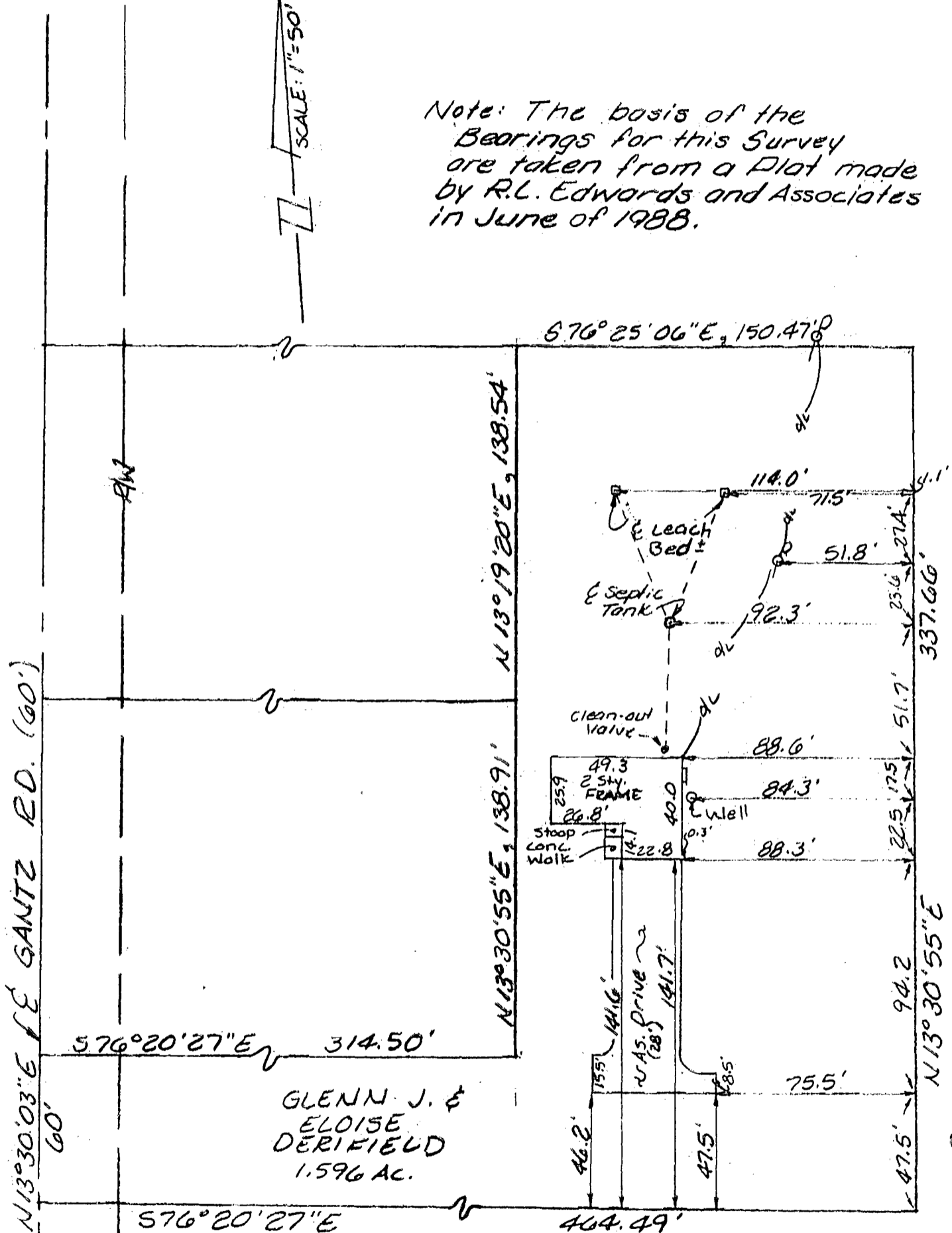
COLUMBUS ENGINEERING CONSULTANTS, INC.

LOCATION SURVEY OF 1.596 AC. FRANKLIN TWP., OHIO

FRANKLIN TWP.
A-21-D



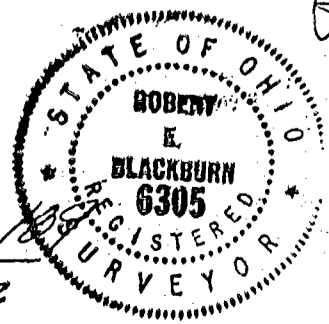
Note: The basis of the Bearings for this Survey are taken from a Plat made by R.L. Edwards and Associates in June of 1988.



8356950

Robert E. Blackburn

Robert E. Blackburn, P.S. #6305 Date 2/6/89



D-17-0