

69-1058

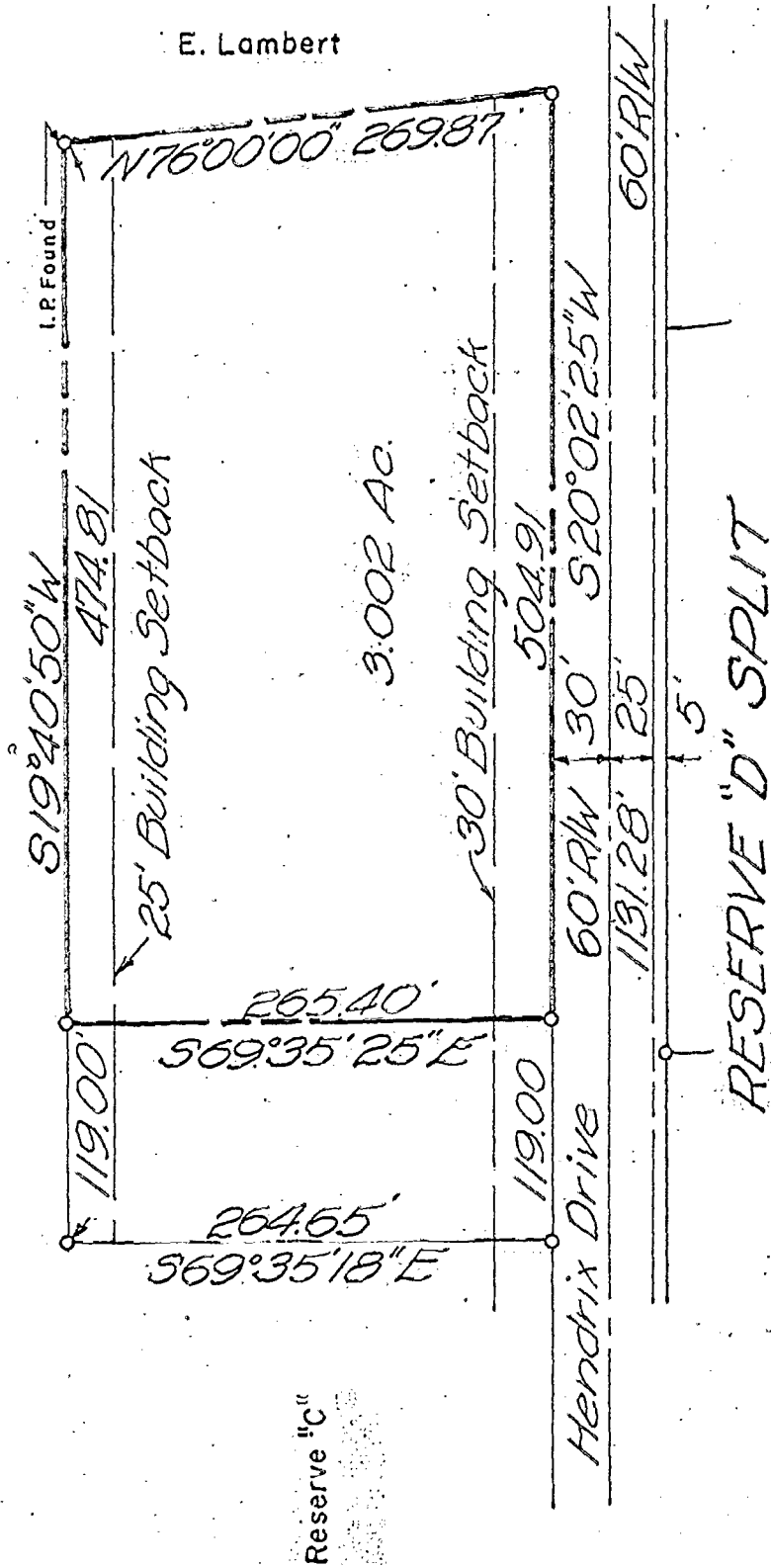
C. no drawing

SURVEYED PLAT  
Land transferred to R.&E.R. Sepich  
—o— Denotes Iron Pins  
Scale 1" = 50'

Total Acreage 3.002 Ac.  
18160.6975  
18135.6975

E. Lambert

FRANK ROAD INDUSTRIAL PARK NO.2



FRANK ROAD INDUSTRIAL PARK NO.1

State of Ohio  
Franklin County, Franklin Twp.  
V.M.S.1454

This is to certify that this is a true and accurate plat of a Survey made by me, for and at the instance of E.E. Hendrix

JONES-STUCKEY, LTD.  
CIVIL ENGINEERS

Dwight D. Stuckey  
Reg. Surveyor No. 4992

D-702

