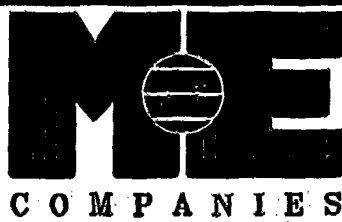


11-206-D
Gls. S/V



635 Brooksedge Boulevard
Westerville, OH 43081
614-818-4900
Fax 818-4902

PROPERTY SPLIT EXHIBIT



FRANK ROAD INDUSTRIAL PARK No. 3
P.B. 41, PG. 56
RESERVE "G"

●=IRON PIN SET (M-E ENG/S-6872)

GRAVEL PARKING LOT

SPIRO S. DIMITROVSKI &
MARGENA A. DIMITROVSKI
O.R.V. 10941, PG. 104
2.630 ACRES

MDM COMPUTER CENTER, INC.
O.R.V. 12644, PG. F19
1.675 ACRES

N66°09'54"E
14.26'

S41°17'26"E

339.31'

Δ=11°27'32"
R=150.00'
CB=N22°11'51"E
CH=29.95'

1.414 ACRES

STONEHAVEN PROPERTIES
D.V. 3416, PG. 270
1.161 ACRES

N16°28'05"E
159.74'

S64°13'51"E
71.43'

N00°00'00"W
50.00'

RUN

CREEK

N59°58'06"W
163.32'

N27°08'07"W
123.58'

WILLOW CREEK SECTION 1
RESERVE "B"
CITY OF COLUMBUS

PLACE OF BEGINNING

BEARING REFERENCE

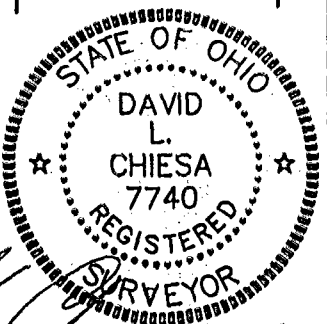
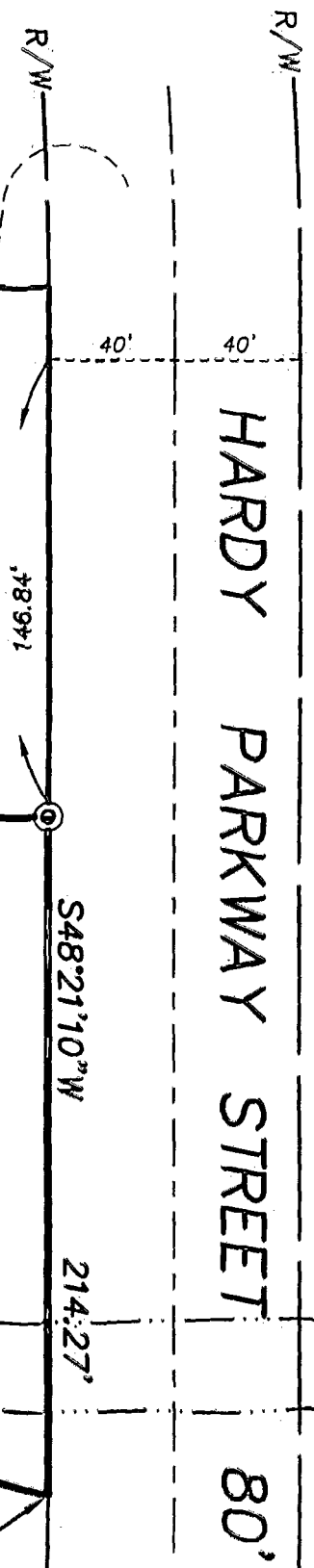
BEARINGS HEREON ARE BASED ON NORTH 48°21'10"EAST
FOR HARDY PARKWAY AS SHOWN ON THE PLAT "FRANK ROAD
INDUSTRIAL PARK No. 3" OF RECORD IN P.B. 41, PG. 56.

DATE 1/19/00 00-023
REVISED DATES JOB NUMBERS

SCALE 1" = 60'

SURVD	DRAW	CHECKED
EM	DC	DC

SPLIT.DWG



BY *[Signature]*
REGISTERED SURVEYOR No. 7740

8/6/09 950