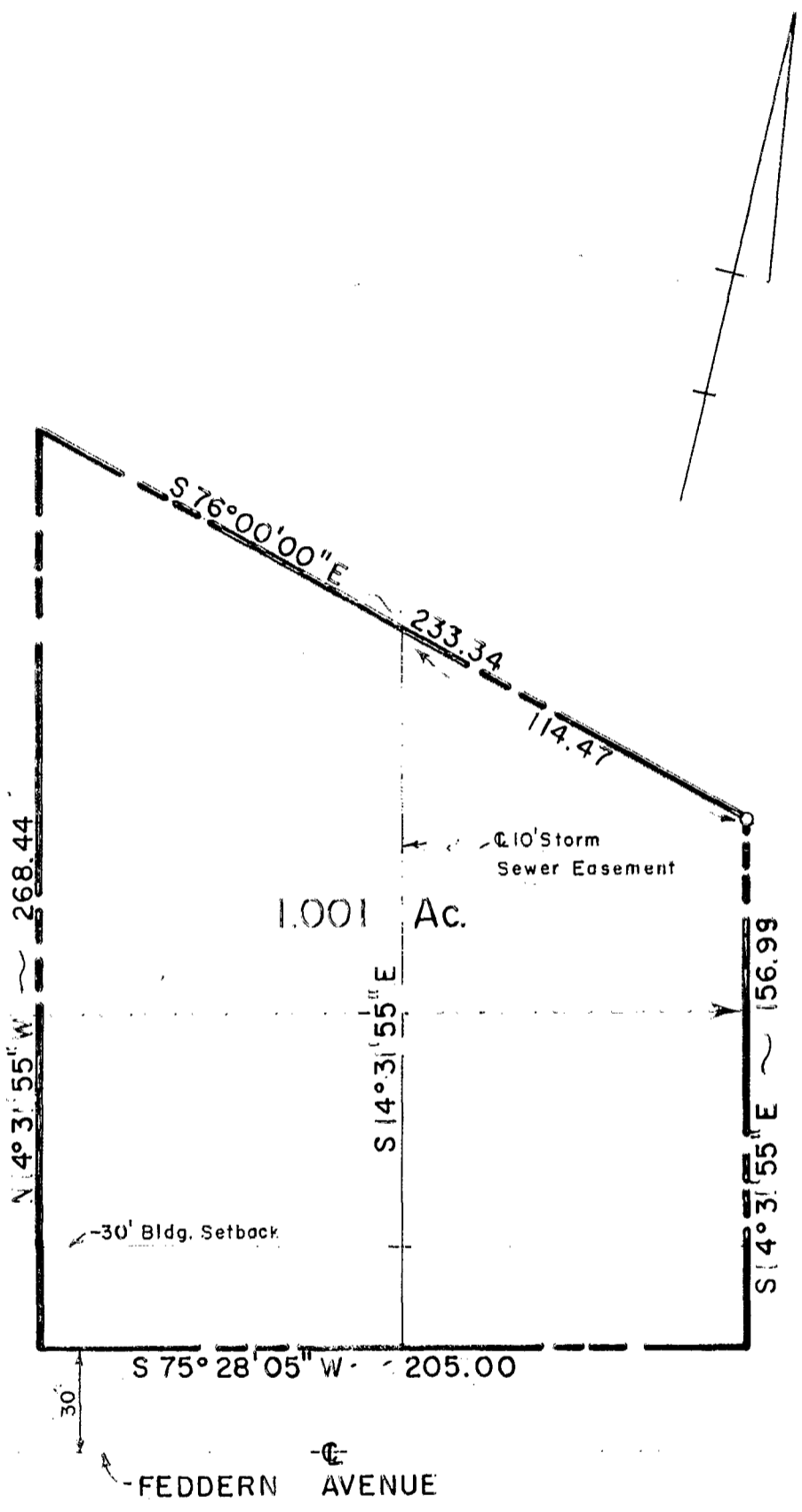


181606775
181606955

SURVEYED PLAT
Land transferred to C.L. Sherrod
-o- Denotes iron Pins
Scale 1" = 50'

M-206-D

Total Acreage 1.001 Ac.



RES E
7.377 Ac.

FRANK ROAD INDUSTRIAL PARK NO. 3

Plat Book 41, Page 56
State of Ohio

Franklin County, Franklin Twp.

V.M.S. 1454

M-206-D

This is to certify that this is a true and accurate plat of a Survey made by me for and at the Instance of Frank Road Industrial Park Inc.

JONES-STUCKEY, LTD.
CIVIL ENGINEERS

Reg. Surveyor No.

Jan., 1971