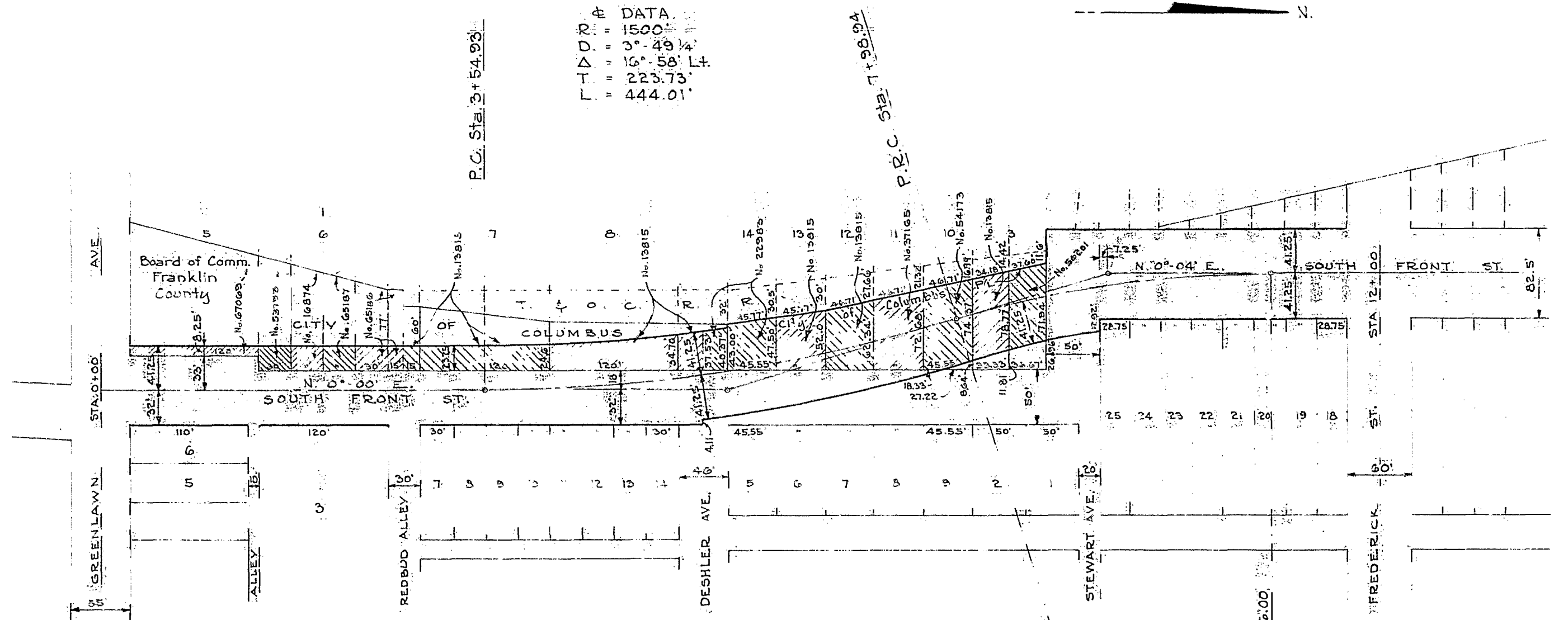


DATA
 R = 1500'
 D = 3°-49' 1/4"
 Δ = 16°-58' Lt.
 T = 223.73'
 L = 444.01'



P.C. Sta. 3+54.93

P.R.C. Sta. 7+98.94

P.T. Sta. 10+96.00

P.R.C. Sta. 7+98.94

PARCELS No	LOT No.	ADDITION	OWNERS NAME	AREA TO BE APPROPRIATED
67069	5 Pt.	John & Philip Knopf's	Franklin County Comm.	990 ^{sq}
53793	6 Pt.	"	City of Columbus	698
6874	6 Pt.	"	"	698
65187	6 Pt.	"	"	698
65187	6 Pt. 1/2 vac. alley	"	"	1,046
13815	7 Pt. 1/2 vac. alley	"	"	3,167
13815	8 Pt. 1/2 vac. street	"	"	4,179
22983	14 Pt. 1/2 vac. street	"	"	2,838
13815	13 Pt.	"	"	2,206
3815	12 Pt.	"	"	2,604
37165	11 Pt.	"	"	3,075
54173	10 Pt.	"	"	3,430
13815	3 Pt.	W.F. Kemmlers	"	2,443
56201	3 Pt.	"	"	2,643
None	Portion of Existing City Street			56,151 ^{sq}

DATA
 R = 1000'
 D = 5°-44'
 Δ = 17°-02' Rt.
 T = 149.79'
 L = 297.06'

LEGEND
 - Portion of Dedicated City Streets Appropriated to Establish said County Road.
 - Additional Lands Appropriated to Establish said County Road.

Establishment as a County Road
PORTION OF S. FRONT ST.
 City of Columbus, Franklin County
 Approved by *Allan Slade*
 Franklin County Engineer
 Date *2-26-73* Scale 1" = 50'