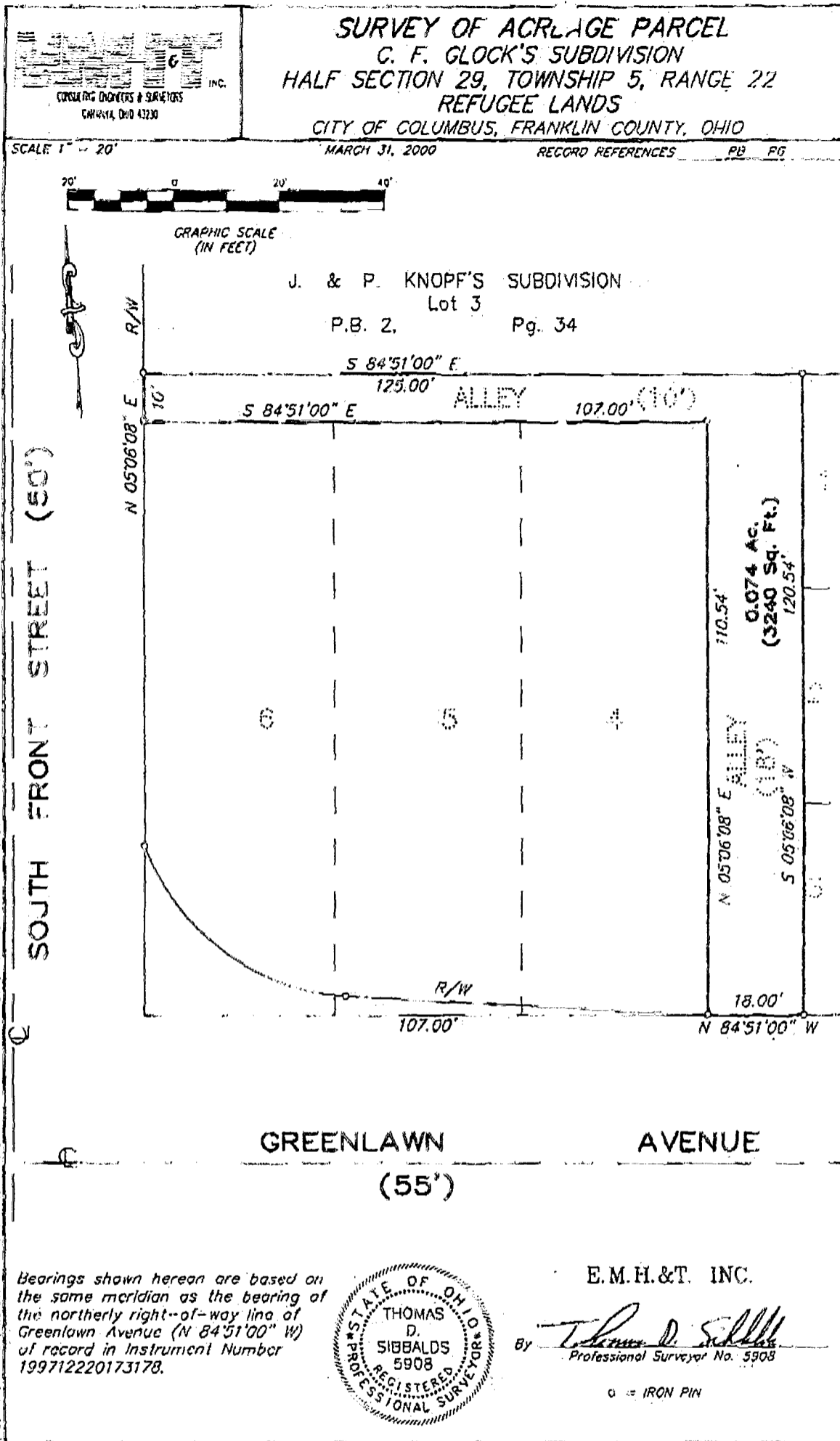
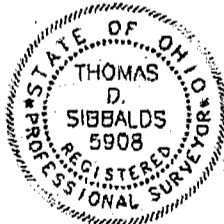


K-22  
Columbus



Bearings shown hereon are based on the same meridian as the bearing of the northerly right-of-way line of Greenlawn Avenue (N 84°51'00" W) of record in Instrument Number 199712220173178.



E.M.H.&T. INC.

By *Thomas D. Sibbalds*  
Professional Surveyor No. 5908

○ = IRON PIN

82 857050