

Lot PT. 89, DESHLER & THURMAN SURVEY, L.P. Subdivision, PB. 1, Pg. 357,

Deed Volume 19763, Pg. D 18, Franklin County, Ohio.

Address 107 E. DESHLER AVE

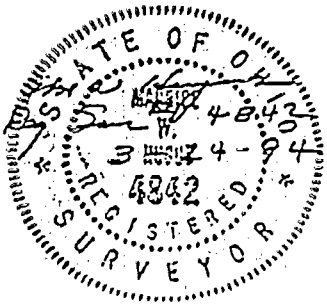
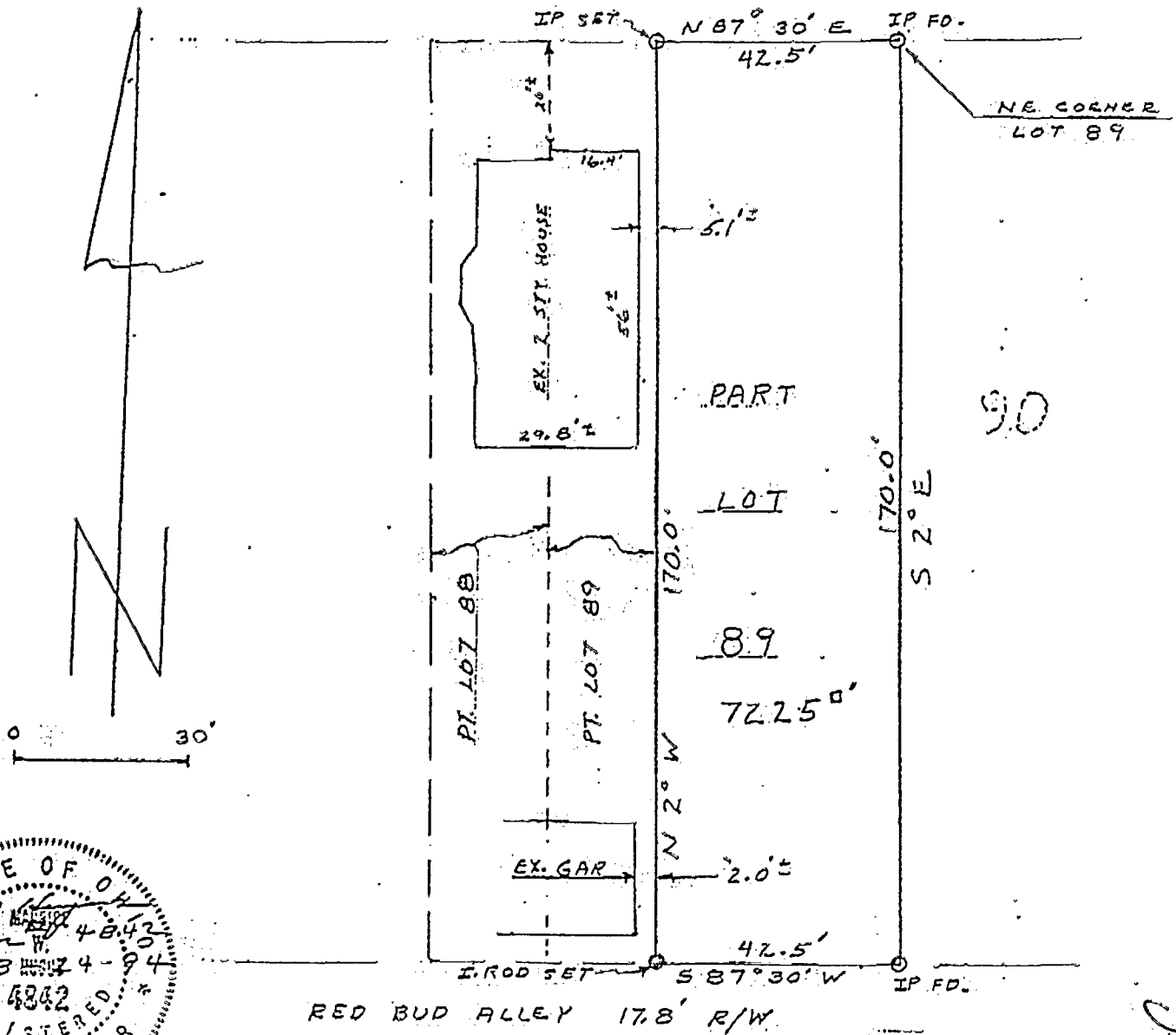
Surveyed for: 107 EAST DESHLER LIMITED PARTN., Date 3-21-94,  
JACK TRAVIS

Surveyed by: M.W. Hugus Registered Surveyor #4842

o = Iron Pins

Scale : 1" = 30'

DESHLER AVE. 60' R/W



187.85 705.0

67-0