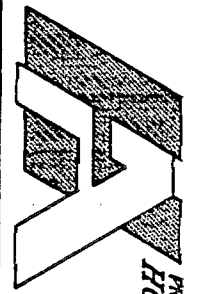


8/607000

M-129
FRANKLIN TWP.



PREPARED BY
HOCKADEN AND ASSOCIATES, INC.
Consulting Engineers & Surveyors
885 North Cassady Avenue
Columbus, Ohio 43219
Tele: (614) 252-0993
Fax: (614) 252-0444
E-Mail: hock@osacomp.com

SITUATED IN THE STATE OF OHIO, COUNTY OF FRANKLIN, TOWNSHIP OF FRANKLIN,
BEING PART OF LOT 102, RICHTER'S SUBDIVISION PLAT BOOK 15, PAGE 9
AND LOCATED IN THAT 0.537 ACRE TRACT CONVERTED TO TOBY L. BOETCHER
IN INSTRUMENT NUMBER 199801210013984

RICHTER'S SUBDIVISION
P.B. 15, PG. 9

106

104

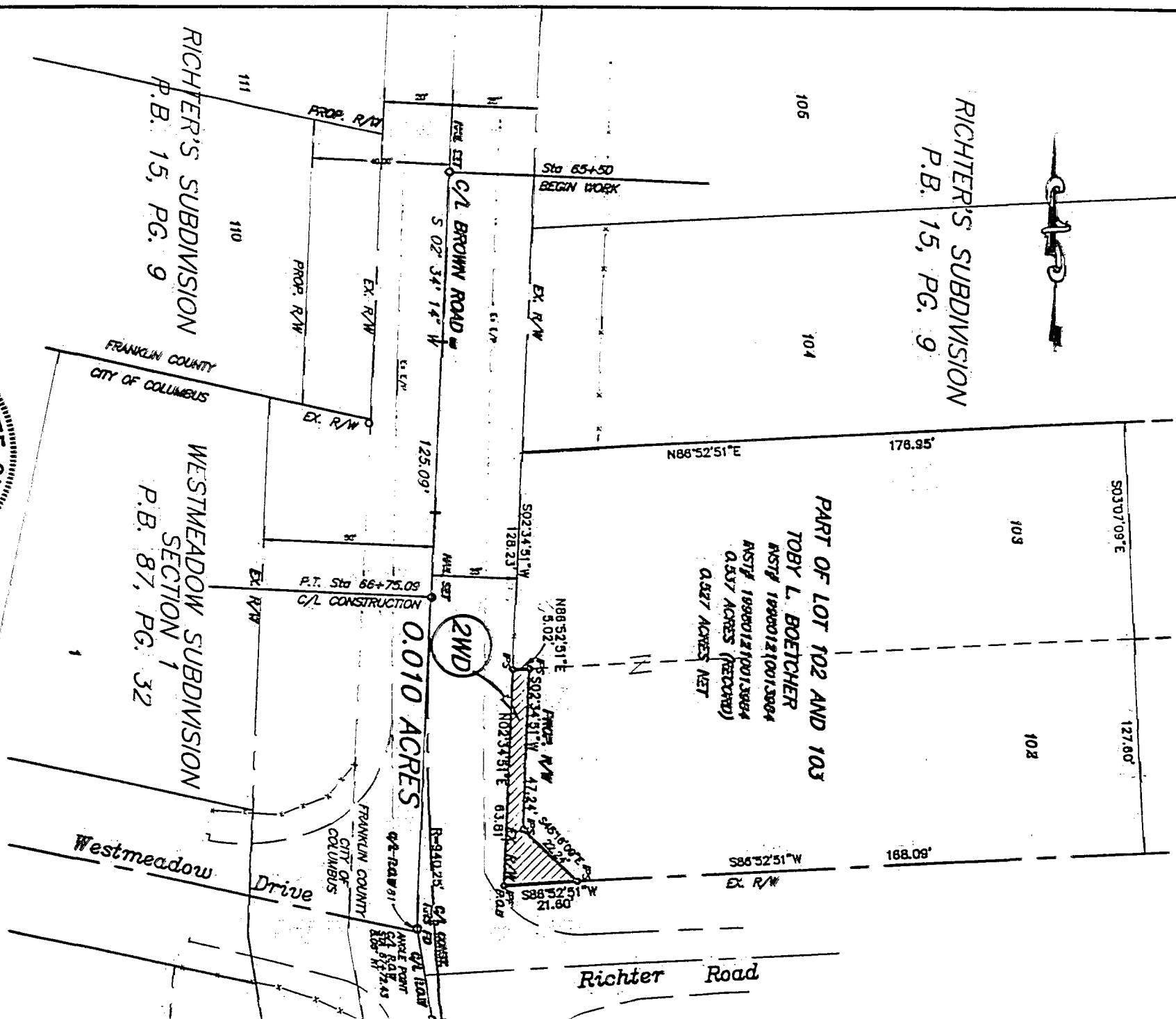
PART OF LOT 102 AND 103
TOBY L. BOETCHER
INST# 199801210013984
INST# 199801210013984
0.537 ACRES (RECORD)
0.527 ACRES NET

0.010 ACRES
2WD

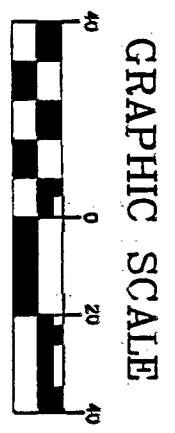
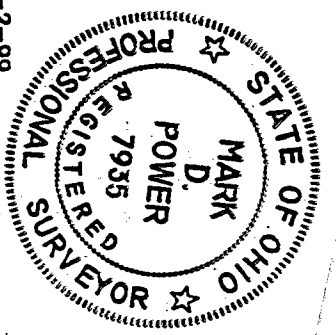
Richter Road

RICHTER'S SUBDIVISION
P.B. 15, PG. 9

WESTMEADOW SUBDIVISION
SECTION 1
P.B. 87, PG. 32



FOR THE PURPOSE OF THIS SURVEY,
A BEARING OF S 02°34'14\" W WAS USED
FOR THE CENTERLINE OF BROWN ROAD,
ACCORDING TO A FIELD SURVEY BY
HOCKADEN AND ASSOCIATES, INC.



(IN FEET)
1 Inch = 40' ft.

SCALE: 1"=40'		
SURV'D	DRAWN	CHECKED
BY	MP	JW

DATE 8-2-99
REMOVED DATES
00000

HOCKADEN AND ASSOCIATES, INC.
CONSULTING ENGINEERS

By *Mark D. Power*
MARK D. POWER P.S. 7935