

PLAT OF 2.658 ACRE TRACT
LOCATED IN
VIRGINIA MILITARY SURVEY NO. 717
CITY OF COLUMBUS, FRANKLIN COUNTY, OHIO

SCALE 1" = 60'

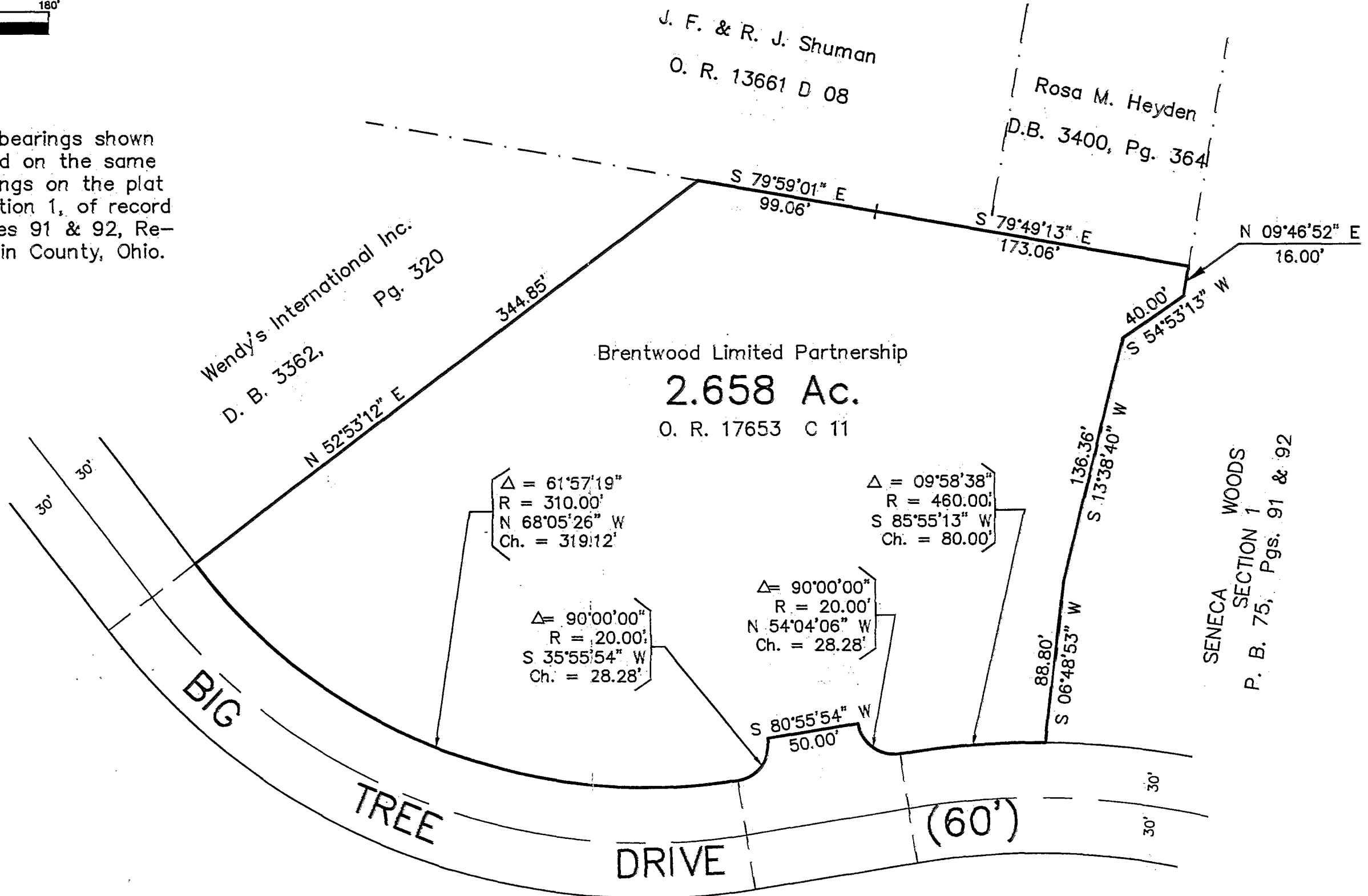
IRON PIN

FEBRUARY 8, 1993
REVISED OCTOBER 5, 1993

RECORD REFERENCES O. R. 17653 C 11



BASIS OF BEARINGS : The bearings shown on this plat are based on the same meridian as the bearings on the plat of Seneca Woods Section 1, of record in Plat Book 75, Pages 91 & 92, Recorder's Office, Franklin County, Ohio.



Wendy's International Inc.
D. B. 3362, Pg. 320

J. F. & R. J. Shuman
O. R. 13661 D 08

Rosa M. Heyden
D.B. 3400, Pg. 364

Brentwood Limited Partnership
2.658 Ac.
O. R. 17653 C 11

SENECA WOODS
SECTION 1
P. B. 75, Pgs. 91 & 92

E.M.H.&T. INC.

By *Amos L. Cibert*
Professional Surveyor No. 5425