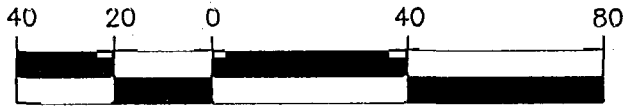


P & L SYSTEMS, LTD.  
 SURVEYORS & ENGINEERS  
 4970 CLEVELAND AVE.  
 COLUMBUS, OHIO 43231  
 (614) 891-4970

0.265 ACRE SURVEY PLAT

SITUATED IN THE STATE OF OHIO, COUNTY OF FRANKLIN, CITY OF COLUMBUS, BEING PART OF VIRGINIA MILITARY LANDS SURVEY NO. 717 AND ALSO BEING PART OF A 0.646 ACRE TRACT OF LAND CONVEYED TO CLYDE FRIESLAND BY DEED OF RECORD OR 13487 I-20 IN THE FRANKLIN COUNTY RECORDER'S OFFICE, COLUMBUS, OHIO.

81607025



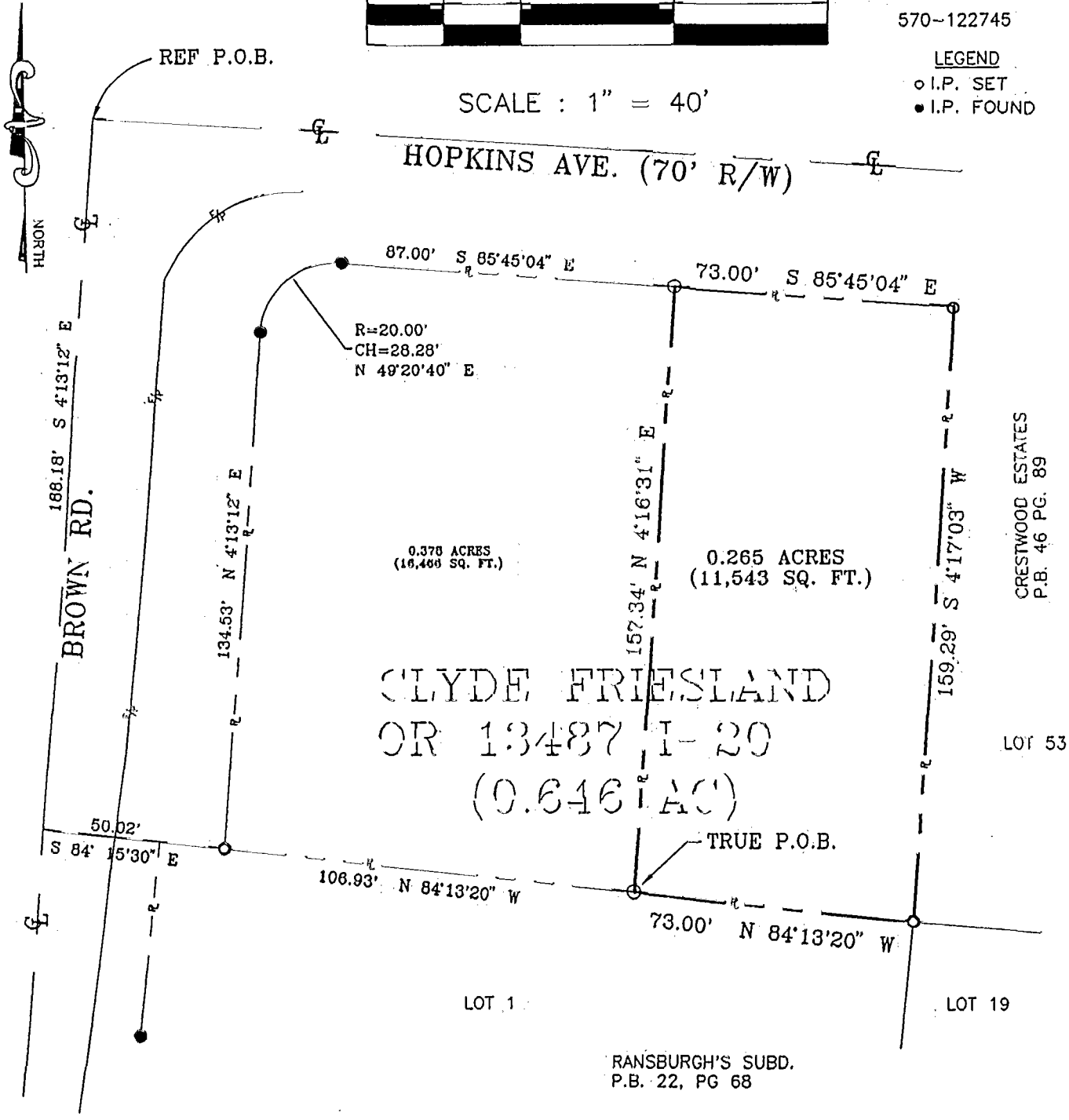
PARCEL NUMBERS

570-122745

LEGEND

- I.P. SET
- I.P. FOUND

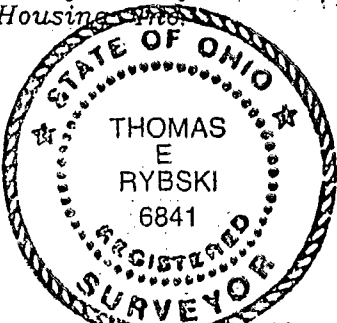
SCALE : 1" = 40'



The "iron pins set", as shown hereon, are 30 inch long, 3/4" inch inside diameter, hollow iron pipes, with plastic caps stamped "P & L Syst. P.S. 6841".

The basis of bearings is the East right-of-way line of Brown Road, assigned a bearing of N 4°13'12" E.

This plat was prepared by P & L Systems, Ltd., from record information and from information obtained from an actual field survey of the premises in July, 1997. This plat is for the exclusive use of Dwain Lee Architects, and Creative Housing, Inc.



P & L Systems, Ltd.

*[Signature]* 1-14-98

BWN-LOT1.DWG

81607025