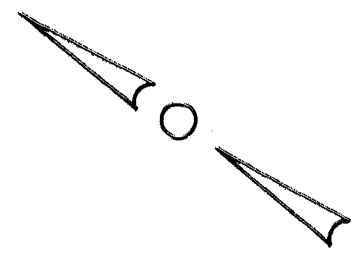
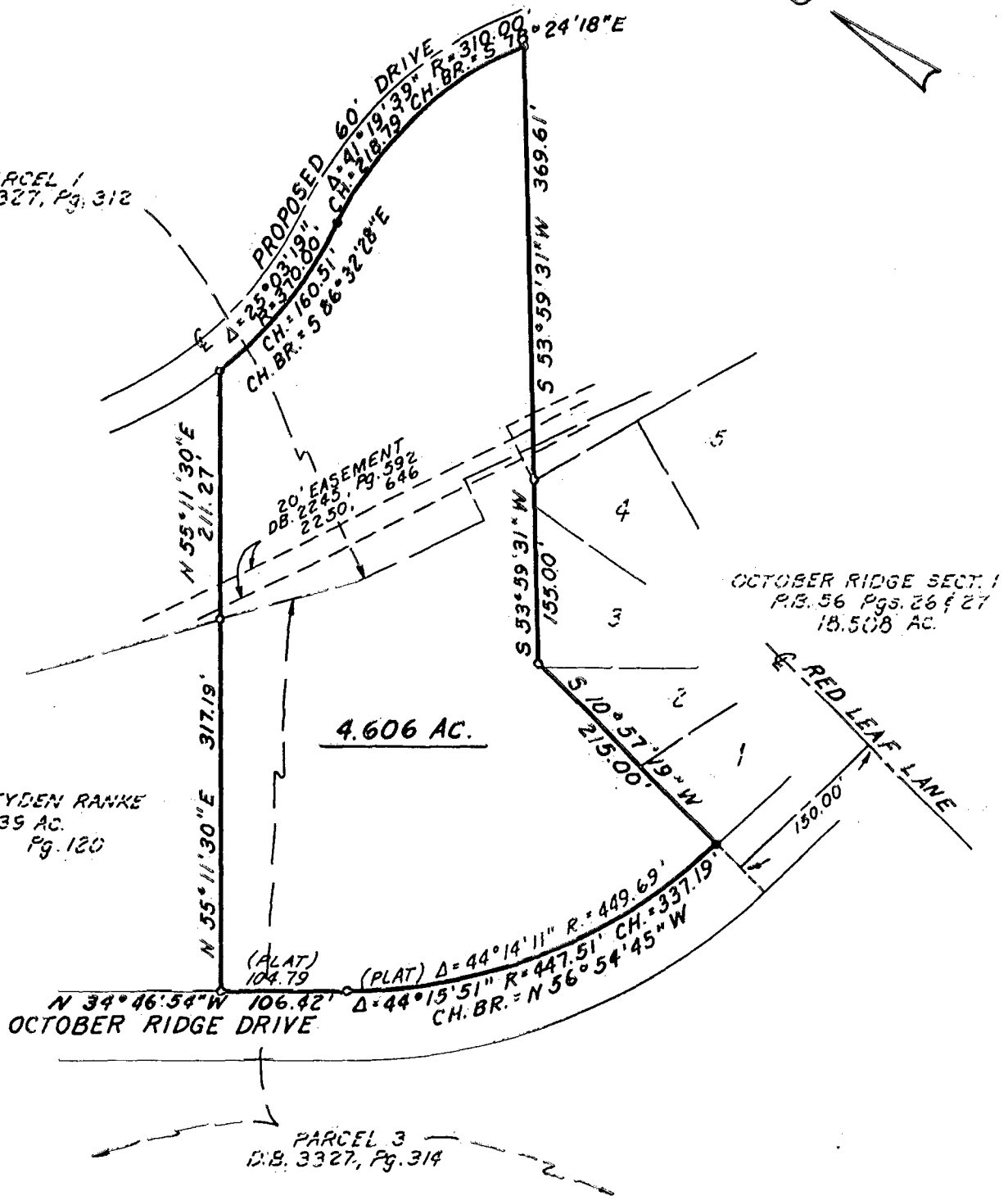


FRANKLIN TWP.
O-21-A

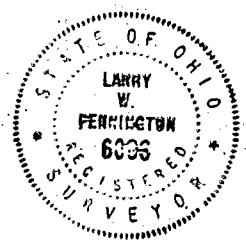


PARCEL 1
D.B. 3327, Pg. 312



**SURVEY OF
4.606 ACRES
PART OF V.M.S. NO. 717
CITY OF COLUMBUS, OHIO**

SCALE: 1" = 100' NOVEMBER 1985



PREPARED BY
R. D. Zande & Associates, Ltd.

Larry W. Pennington
REGISTERED SURVEYOR NO. 6096

8107000
81357000

17-0-0