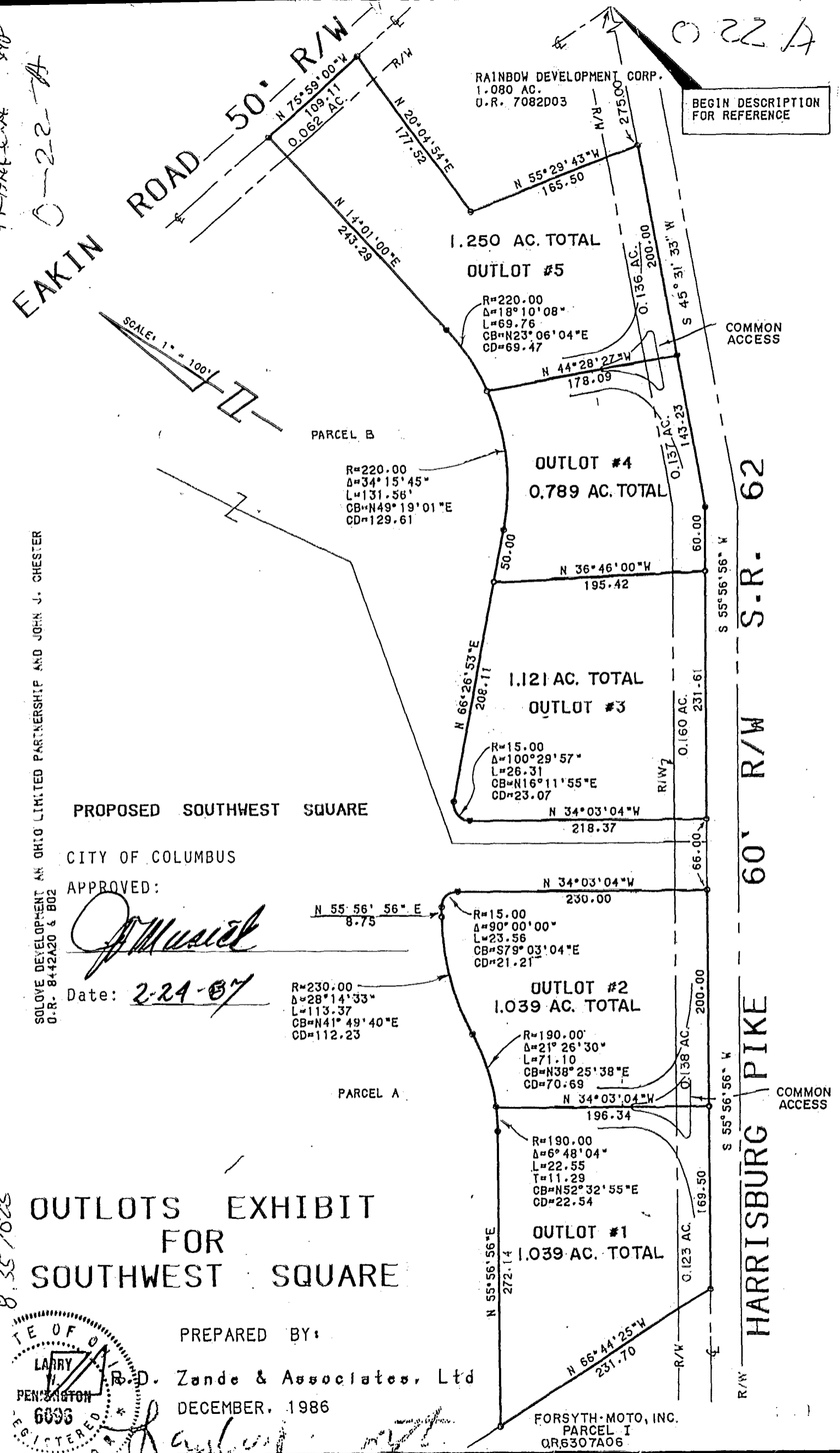


FRANKLIN TWP
0-22-A

022A



SOLOVE DEVELOPMENT AN OHIO LIMITED PARTNERSHIP AND JOHN J. CHESTER
O.R. 842A20 & B02

PROPOSED SOUTHWEST SQUARE

CITY OF COLUMBUS

APPROVED:

[Signature]

Date: 2-24-87

R=230.00
Δ=28°14'33"
L=113.37
CB=N41°49'40"E
CD=112.23

R=15.00
Δ=90°00'00"
L=23.56
CB=S79°03'04"E
CD=21.21

R=190.00
Δ=21°26'30"
L=71.10
CB=N38°25'38"E
CD=70.69

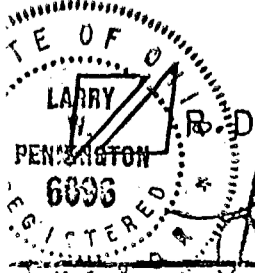
R=190.00
Δ=6°48'04"
L=22.55
T=11.29
CB=N52°32'55"E
CD=22.54

OUTLOTS EXHIBIT FOR SOUTHWEST SQUARE

PREPARED BY:

R.D. Zande & Associates, Ltd

DECEMBER, 1986



8357025