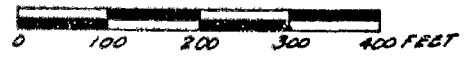
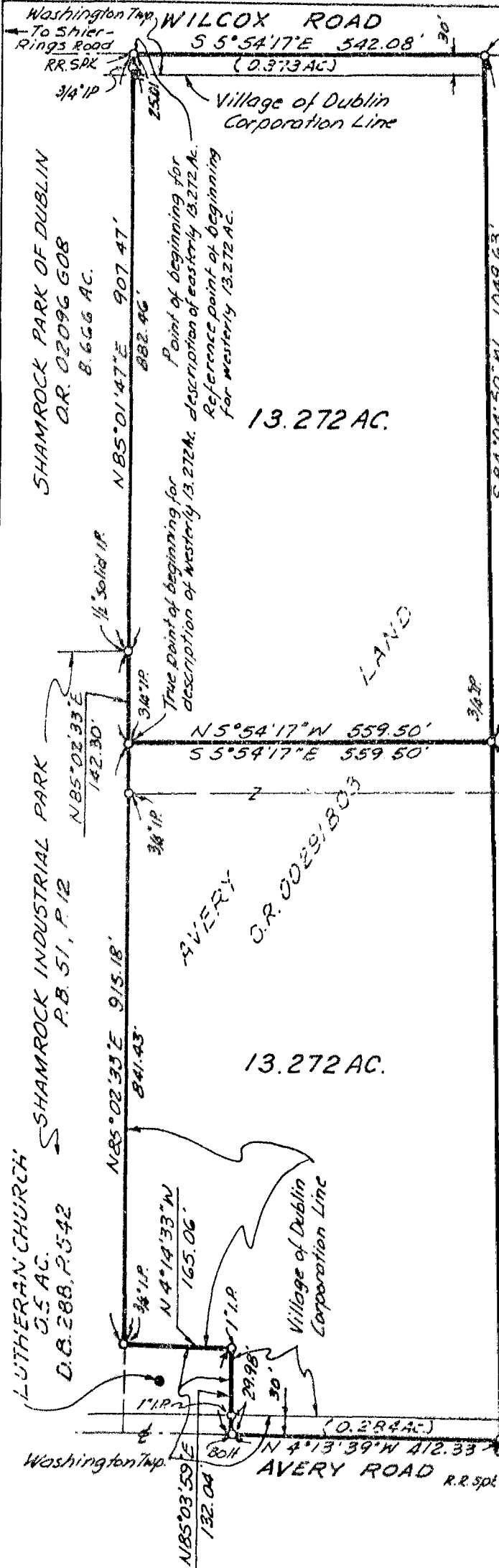


BAUER, DAVIDSON & MERCHANT, INC.

CONSULTING ENGINEERS

255 GREEN MEADOWS DRIVE SOUTH SUITE B P.O. BOX 152 POWELL, OHIO 43065



GRAPHIC SCALE



BOUNDARY SURVEY MAP OF TWO 13.272 ACRE TRACTS OF LAND LOCATED BETWEEN AVERY ROAD AND WILCOX ROAD SOUTH OF SHIER-RINGS ROAD, BEING, IN PART, IN THE VILLAGE OF DUBLIN AND, IN PART, IN THE TOWNSHIP OF WASHINGTON, COUNTY OF FRANKLIN, STATE OF OHIO

O-110-C

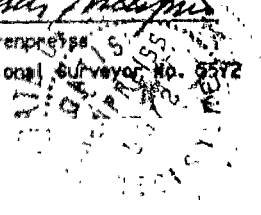
The two 13.272 acre tracts of land are situated in the State of Ohio, County of Franklin, both being, in part, in the Village of Dublin and, in part, in the Township of Washington, and are a part of Virginia Military Survey No. 3004 and are out of that 52.753 acre tract of land described in the deed to Avery Land, of record in Official Record 00291803, Recorder's Office, Franklin County, Ohio.

The bearings shown on this map are based on an assumed meridian.

We hereby certify that the attached map was prepared from information obtained from an actual field survey conducted by Bauer, Davidson & Merchant, Inc. in January of 1987.

BAUER, DAVIDSON & MERCHANT, INC.
Consulting Engineers

By: *Gatis Erenpreys*
Gatis Erenpreys
Professional Surveyor No. 9372



Scale: 1"=200'
January 29, 1987
Order No. 2117-86