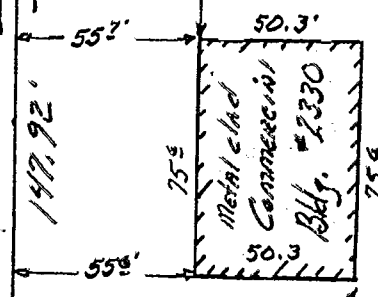


E Blue Rock Blvd. 60' R/W

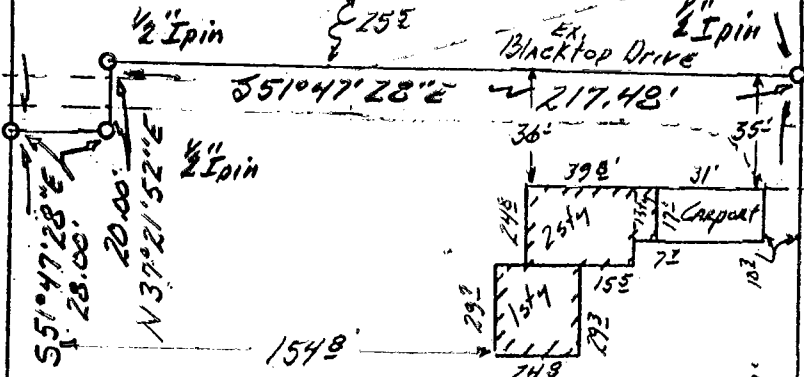
3/4" I.P.F.D. S 59° 14' 52" E ~ 307.57' 70.00' 3/4" I.P.F.D. SET

Roadway Tract 0.652 ACRES



North Tract 0.824 ACRES

Road Line 7



South Tract 1.578 ACRES

JAMUEL F. LISA GABRIEL 5.586 AC OR 14439-G-19

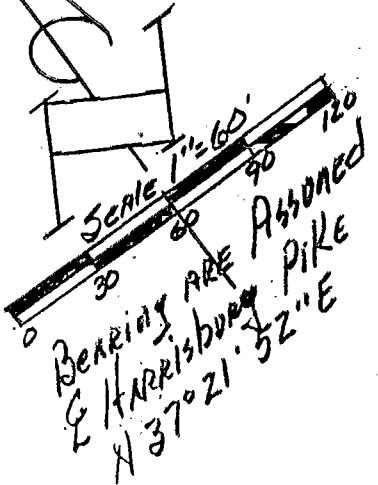
E HARRISBURG PIKE N 37° 21' 52" E ~ 482.57'

old 30' 5 37° 21' 52" W ~ 316.17'

N 75° 36' 15" W ~ 266.48' 52.32' 3/4" I.P.F.D. HENRY & GLORIA PATTON 0.731 AC OR 3835-B-07

SURVEY OF THREE TRACTS in VMS# 1454 & 2442 City of Columbus, Franklin Co., Ohio: FOR

JAMUEL GABRIEL



LOUIS F. HAINES SURVEYOR 354 KESSLER ST. GROVEPORT, OH. 43125 Phone 837-2181

I hereby certify that the plat shown hereon was prepared from an actual field survey, under my supervision and that said plat correctly represents said survey. DATE: July 30, 1992 SIGNED: Louis F. Haines Revised Aug. 5, 1992

BC 856950

FRANKLIN TWP 0-20-1