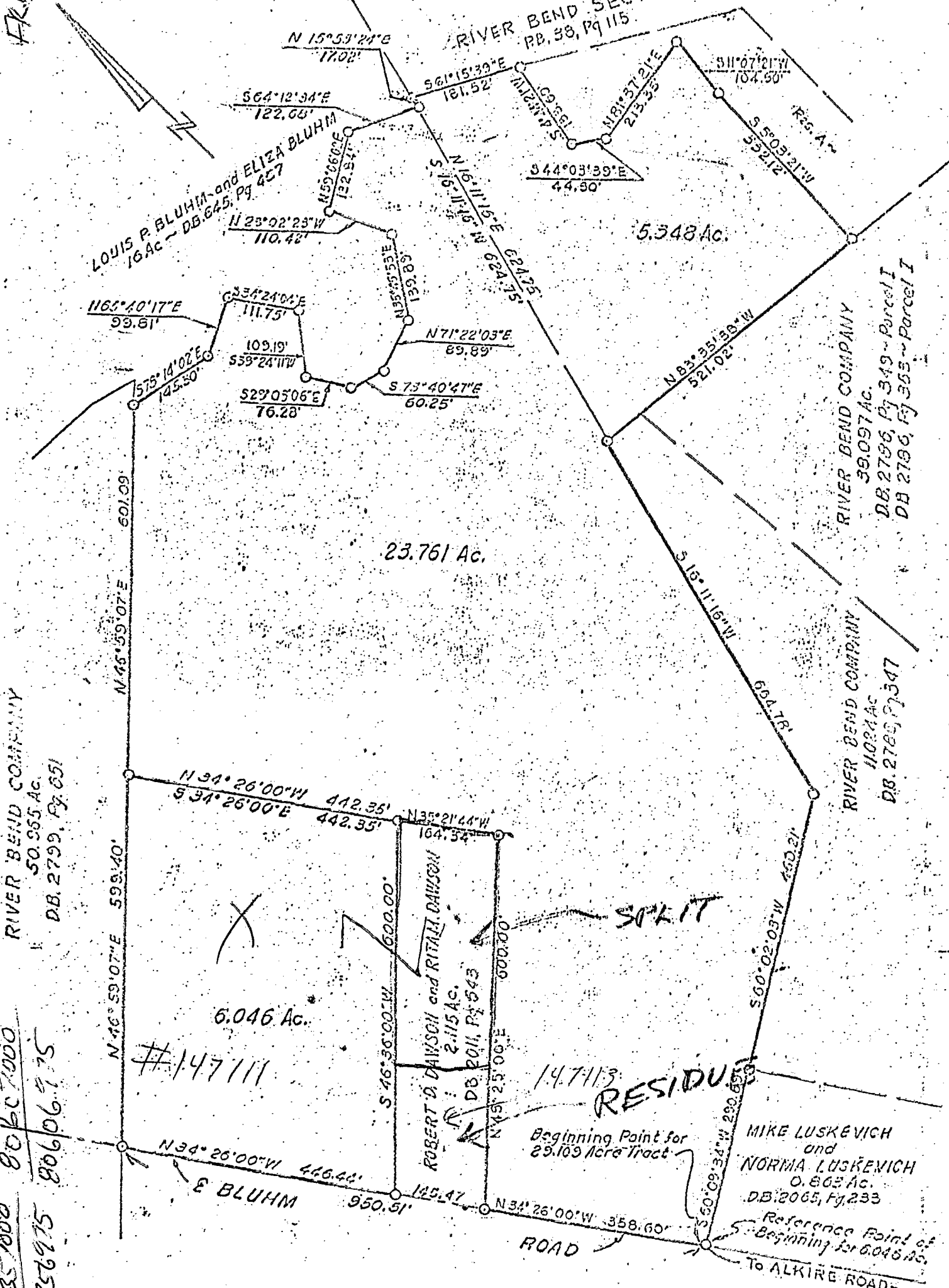


ROCKADEN-LIPES-ROUSCULP, INC.
 CONSULTING ENGINEERS
 2307 1/2 N. HIGH ST.
 COLUMBUS, OHIO

020-H

FRANKLIN 774
 0-20-14

BOUNDARY SURVEY PLAT OF THE MURNANE PROPERTY
 ON THE NORTHEAST PLAT OF THE BLUHM ROAD, JUST
 NORTHWEST OF ALKIRE ROAD



RIVER BEND COMPANY
 50.555 Ac.
 DB. 2799, Pg. 651

RIVER BEND COMPANY
 39.097 Ac.
 DB. 2796, Pg. 349 - Parcel I
 DB. 2796, Pg. 355 - Parcel I

RIVER BEND COMPANY
 11024 Ac.
 DB. 2789, Pg. 347

RIVER BEND COMPANY
 50.555 Ac.
 DB. 2799, Pg. 651

RIVER BEND COMPANY
 39.097 Ac.
 DB. 2796, Pg. 349 - Parcel I
 DB. 2796, Pg. 355 - Parcel I

RIVER BEND COMPANY
 11024 Ac.
 DB. 2789, Pg. 347

BLISS 7000
 80607000
 80356975
 80606775

We hereby certify that the foregoing plat was prepared from an actual survey of the premises.

SCALE 1" = 200'

DATE: 3-5-68 P-220
 REVISION: _____ ORDER NUMBER: _____

ROCKADEN-LIPES-ROUSCULP, INC.

ED. W. D.	DRAWN	CHECKED
J.P.	J.C.S.	F.R.B.

By.....
 Registered Surveyor

03
 0208
 1965
 ALKIRE
 077065
 020
 0360