

BAUER, DAVIDSON & MERCHANT, INC.

CONSULTING ENGINEERS
 255 GREEN MEADOWS DRIVE SOUTH P.O. BOX 370 POWELL, OHIO 43065
 PHONE: 614-846-3393 FAX: 614-846-4575

BOUNDARY SURVEY MAP

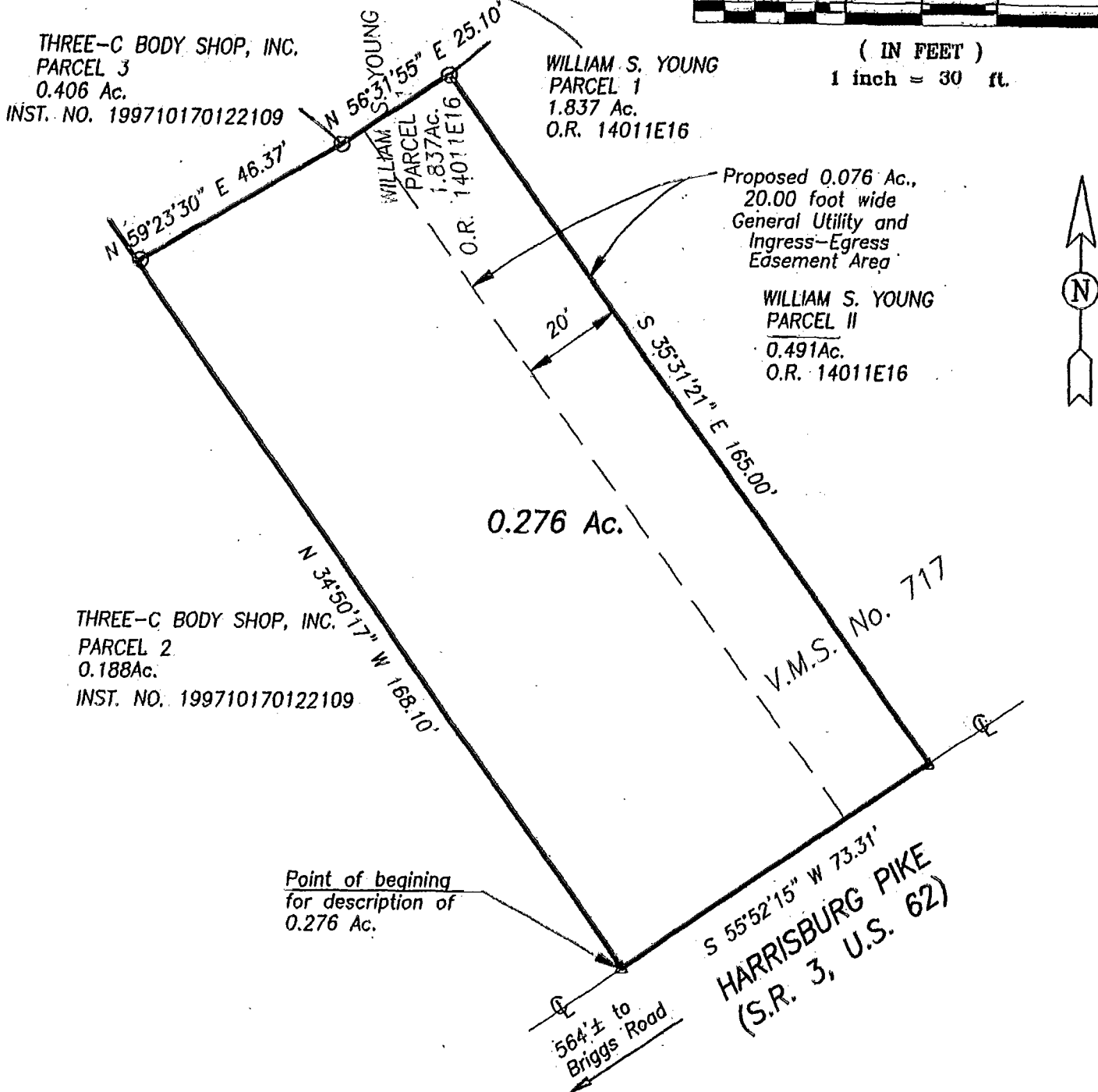
OF 0.276 ACRE TRACT OF LAND LOCATED NORTHWEST OF HARRISBURG PIKE (S.R.3 AND U.S.62) AND NORTH OF BRIGGS ROAD, IN THE TOWNSHIP OF FRANKLIN, COUNTY OF FRANKLIN, STATE OF OHIO

GRAPHIC SCALE



(IN FEET)

1 inch = 30 ft.



Situated in the State of Ohio, County of Franklin, Township of Franklin, being in Virginia Military Survey No. 717, containing 0.276 acre of land, more or less, said 0.276 acre being out of that 1.837 acre tract of land referred to as PARCEL 1 as described in the deed to William S. Young, of record in Official Record 14011E16, Recorder's Office, Franklin County, Ohio.

We hereby state that this map was prepared from information obtained from an actual field survey conducted by Bauer, Davidson & Merchant, Inc. in July of 2000.

The bearings shown on the above map correspond to the bearing of N 13°38'00" E as given along the Virginia Military Survey Line and as described in the deed to Robert A. Juniper, Jr. of record in Official Record 14665H14, Recorder's Office, Franklin County, Ohio.

- △— Railroad Spike Found
- △— Railroad Spike Set
- 3/4-inch (I.D.) Iron Pipe found
- 3/4-inch (I.D.) Iron Pipe set

AUGUST 24, 2000 Revised September 14, 2000
 Revised September 12, 2000

BAUER, DAVIDSON & MERCHANT, INC.
 CONSULTING ENGINEERS
 GATIS ERENPREISS
 Registered Professional Surveyor No. 5572
 STATE OF OHIO

8102025

0-22-A