

SCALE 1" = 20'

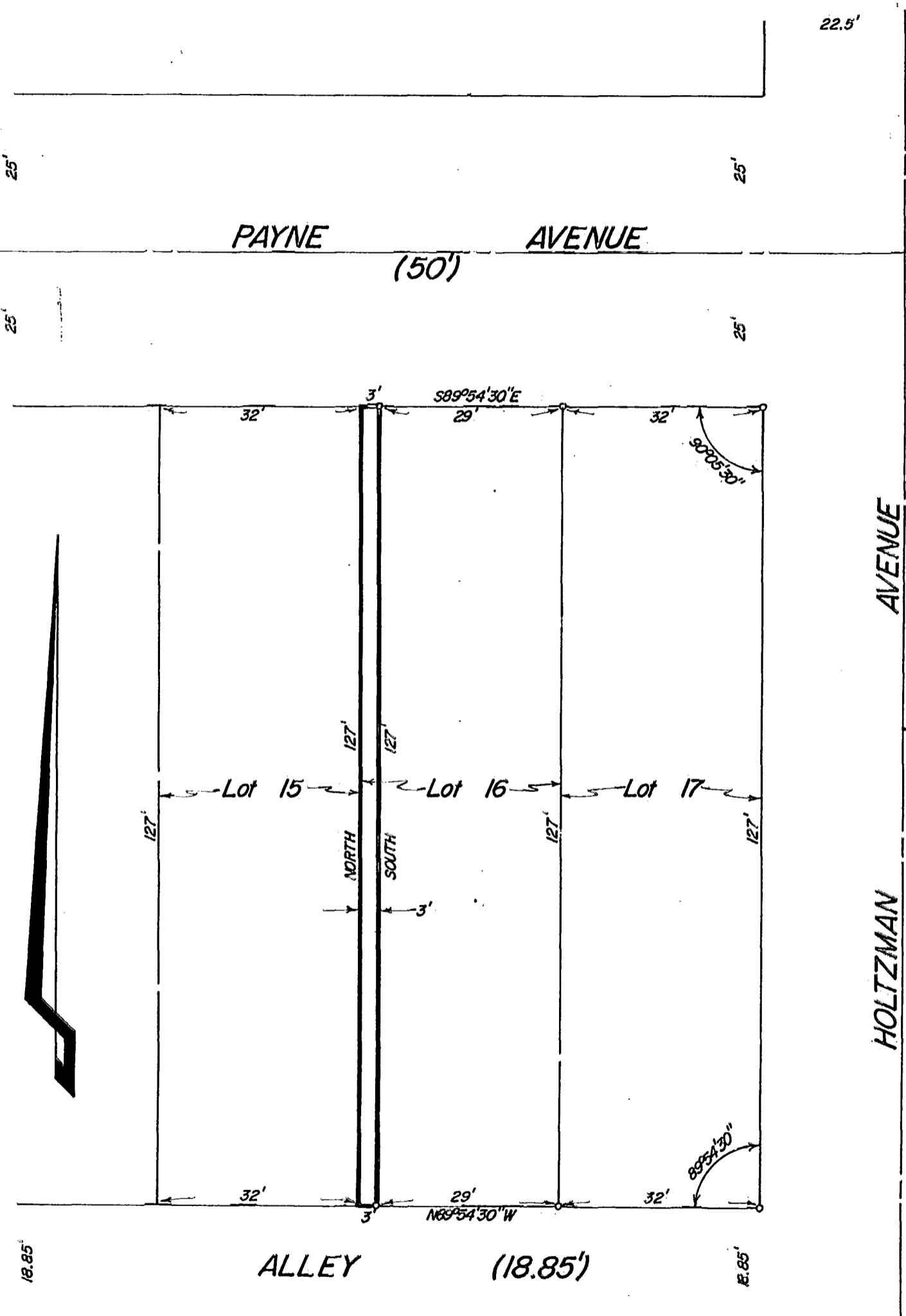
○=IRON PIN

FEBRUARY 1, 1988

RECORD REFERENCES P.B. 5, Pg. 386

8435-7100

SPLIT (0/10) 12=527



NOTE: Basis for bearing was assumed true north.

We hereby declare that the foregoing plat was prepared from an actual survey of the premises and shows the location of the boundary and improvements, and that there are no encroachments either way across the boundary of this lot except as shown hereon.

E.M.H.&T. INC.
 By *Arthur W. Cuprell*
 Professional Surveyor No. 5485

Columbus
 L-63