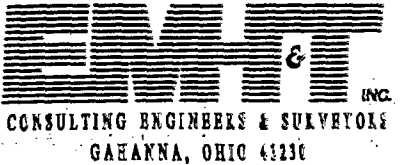


84357075

C-53-A

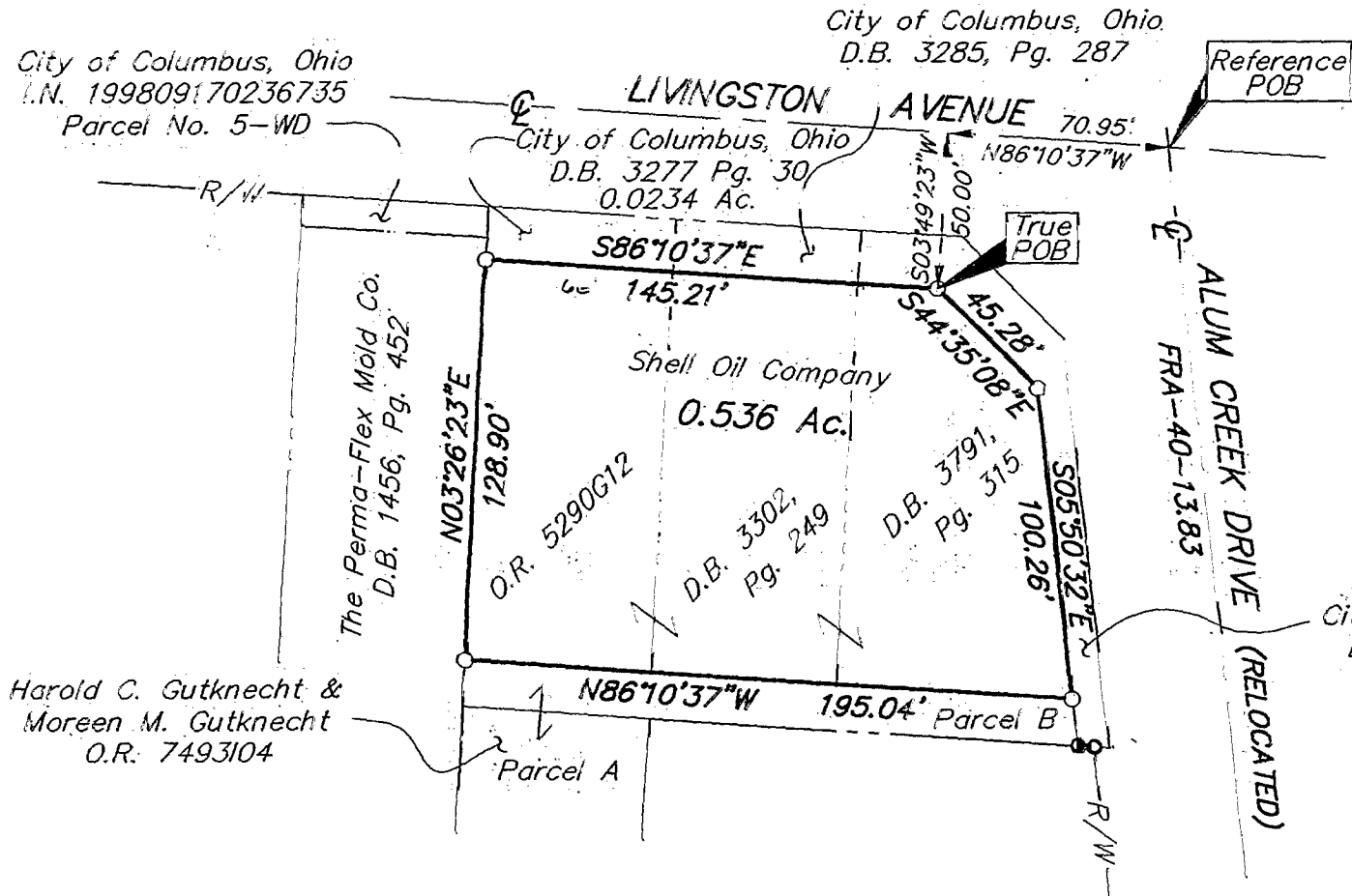


SURVEY OF ACREAGE PARCEL
LOCATED IN
SECTION 23, TOWNSHIP 5, RANGE 22
REFUGEE LANDS
CITY OF COLUMBUS, FRANKLIN COUNTY, OHIO

COLUMBUS

SCALE 1" = 60'

FEBRUARY 21, 2001



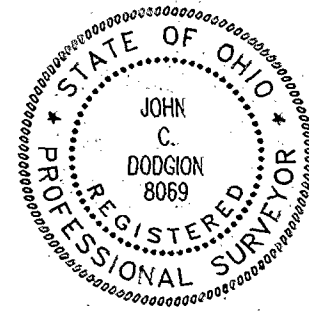
- = MON. FND.
- = I.P. FND.
- = I.P. SET
- ⊙ = MAG. NAIL FND.
- = MAG. NAIL SET
- ▲ = R.R. SPK. FND.
- △ = R.R. SPK. SET
- ◆ = P.K. NAIL FND.

I.P.S. Set are 13/16" I.D. Iron pipe w/ cap inscribed EMH&T.



GRAPHIC SCALE (IN FEET)

Bearings are based on the same bearing system as the State of Ohio Department of Highways plan "FRA-40-13.83"



E.M.H.&T. INC.

By *John C. Dodgion* 2/21/01
Professional Surveyor No. 8069

I:\SERVERS\SURVEY\PROJECT\2001\10.01\DWG\010110BV.DWG U XREF:s. PRINTED BY JBUSHBY February 09, 2001 1:01 PM