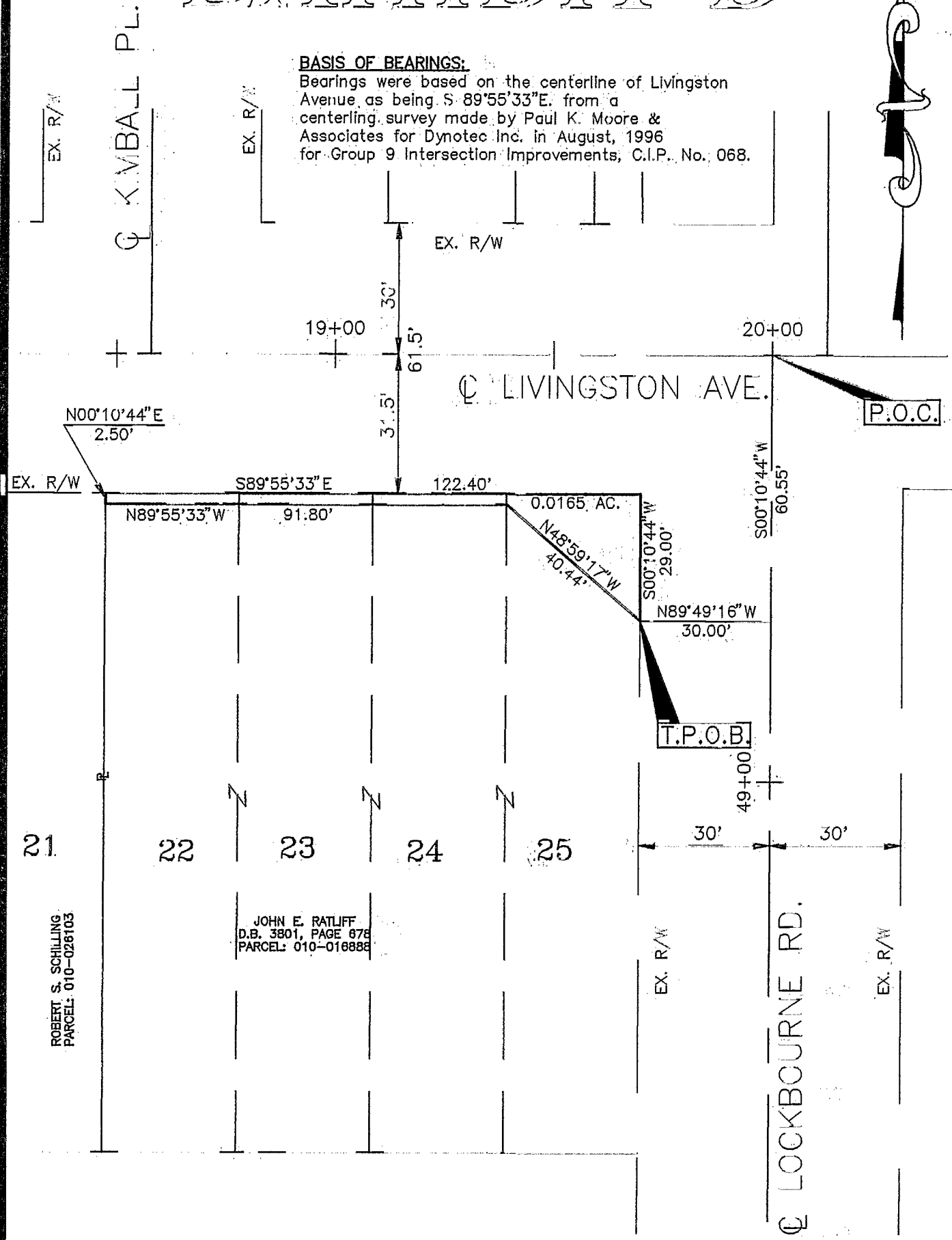


EXHIBIT B

BASIS OF BEARINGS:

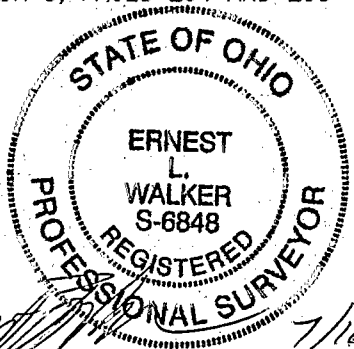
Bearings were based on the centerline of Livingston Avenue, as being S 89°55'33"E, from a centering survey made by Paul K. Moore & Associates for Dynotec Inc. in August, 1996 for Group 9 Intersection Improvements, C.I.P. No. 068.



JACOB H. STUDERS AMENDED SUBDIVISION
PLAT BOOK 5, PAGES 294 AND 295



GRAPHIC SCALE
SCALE 1" = 30'



[Signature]
PROFESSIONAL SURVEYOR NO. S-6848 DATE: 7/16/98

GROUP 9 INTERSECTION IMPROVEMENTS C.I.P. NO. 068		
DYNOTEC, INC. 2700 E. DUBLIN-GRANVILLE ROAD, SUITE 6 COLUMBUS, OHIO 43231		
DATE: 05/05/98	DWG. NO.: WDB	DRAWN: KJS
SCALE: 1" = 30'	CHECKED: ELW	

83 857100