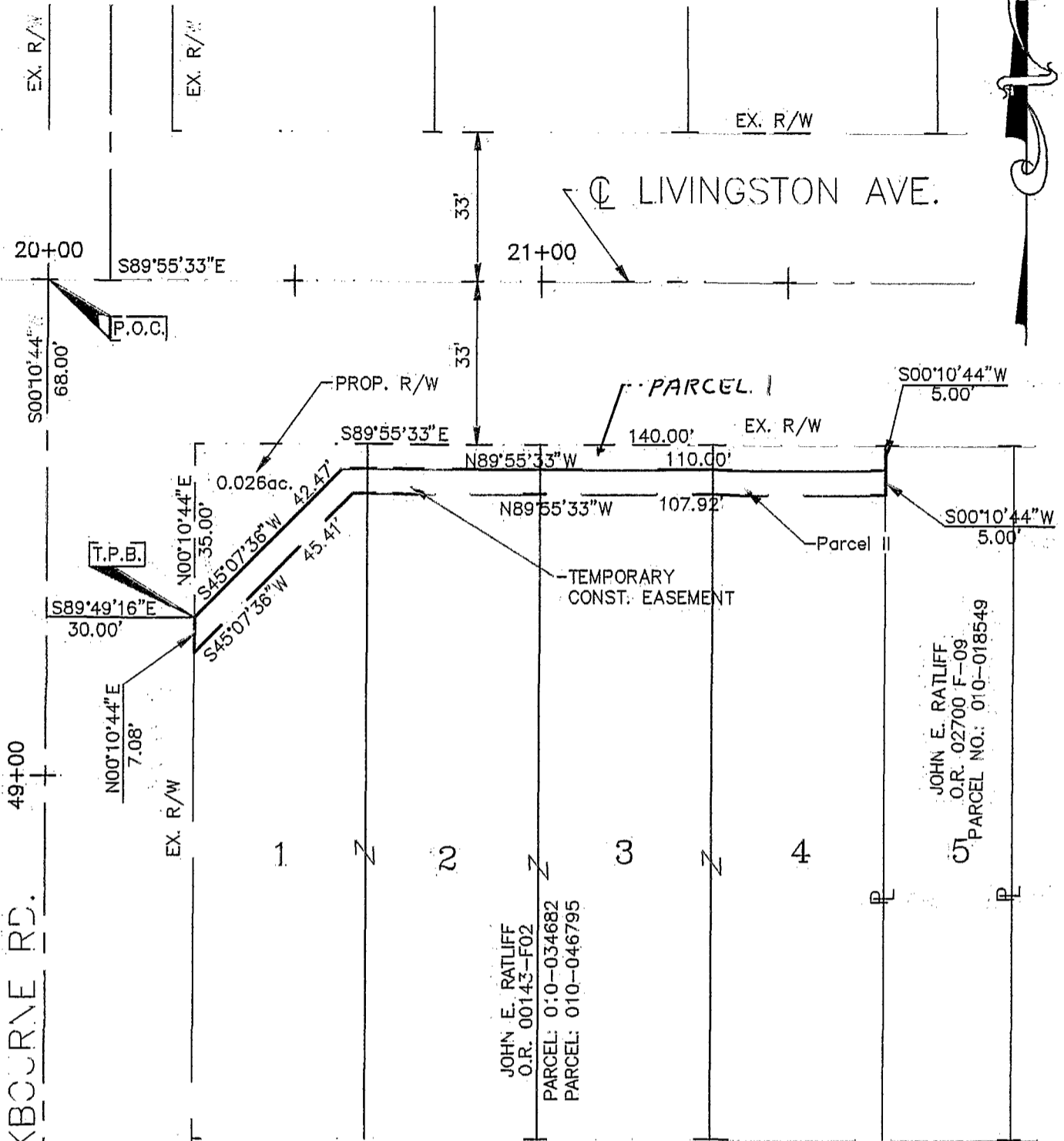


EXHIBIT B



Miller Avenue Addition
Plat Book 5, Page 24.

BASIS OF BEARINGS:

Bearings were based on the centerline of Livingston Avenue as being S 89°55'33"E. from a centerline survey made by Paul K. Moore & Associates for Dynotec Inc. in August, 1996 for Group, 9 Intersection Improvements, C.I.P. No. 068.



GRAPHIC SCALE

SCALE 1" = 30'



[Signature]
6/14/98
PROFESSIONAL SURVEYOR NO. S-6848 DATE

GROUP 9 INTERSECTION IMPROVEMENTS C.I.P. NO. 068		
DYNOTEC, INC. 2700 E. DUBLIN-GRANVILLE ROAD, SUITE 6 COLUMBUS, OHIO 43231		
DATE: 03/23/98	DRAWN: RJS	CHECKED: ELW
SCALE: 1" = 30'	DWG NO. WD8/T12	

83 857 100