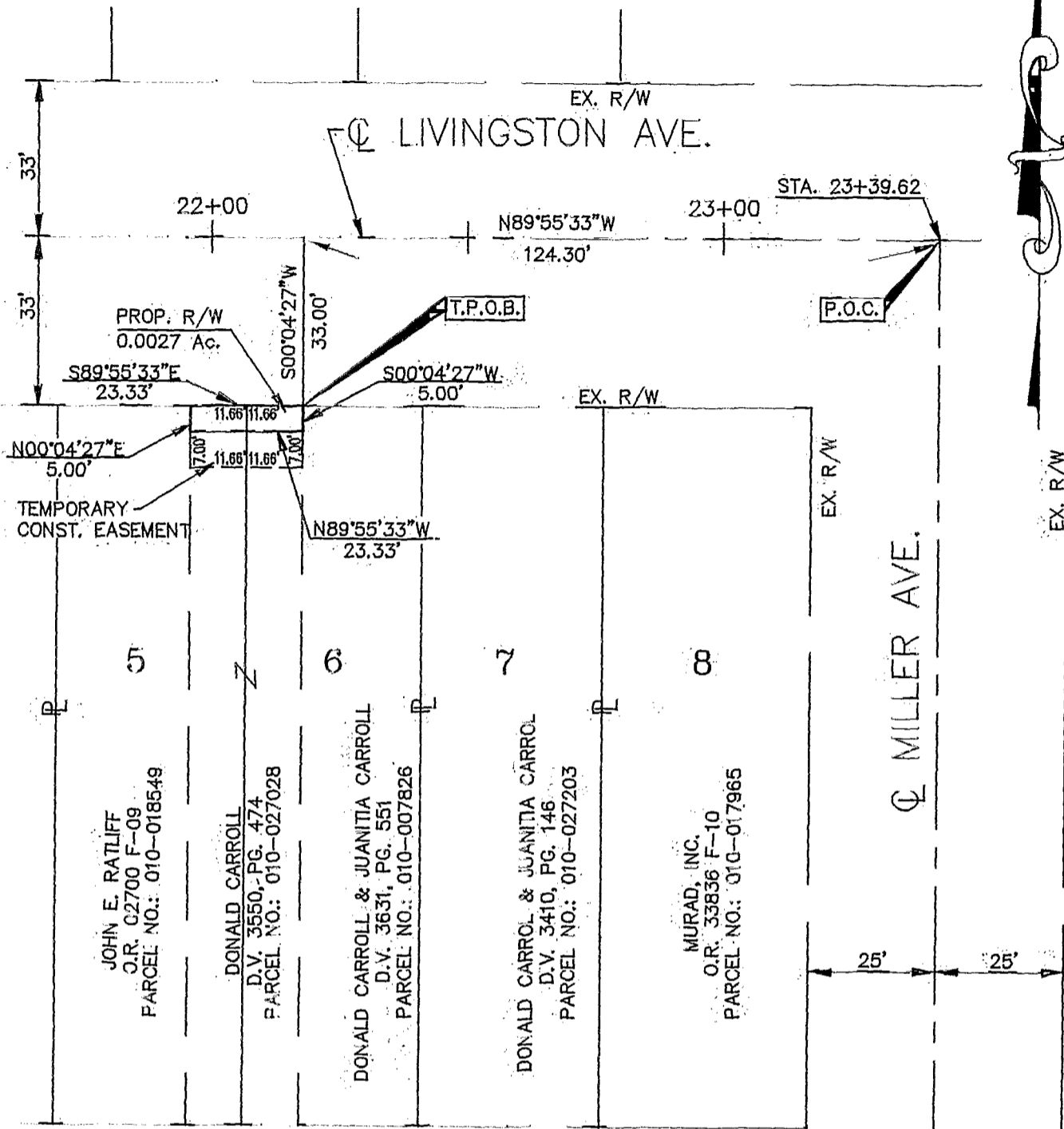


# EXHIBIT B



GEORGE WILLIAMS, JR.  
MILLER AVENUE ADDITION  
PLAT BOOK 5, PAGE 24

**BASIS OF BEARINGS:**

Bearings were based on the centerline of Livingston Avenue as being  $S 89^{\circ}55'33''E$ , from a centerline survey made by Paul K. Moore & Associates for Dynotec, Inc. in August 1996 for Group, 9 Intersection Improvements, C.I.P. No. 068.



**GRAPHIC SCALE**

SCALE 1" = 30'



PROFESSIONAL SURVEYOR NO. S-6848 DATE 12/12/98

**GROUP 9 INTERSECTION IMPROVEMENTS  
C.I.P. NO. 068**

**DYNOTEC, INC.**

2700 E. DUBLIN-GRANVILLE ROAD, SUITE 6  
COLUMBUS, OHIO 43231

DATE: 12-4-98

DRAWN: RJS

SCALE: 1" = 30'

DWG. NO. WD10/T14

CHECKED: ELW

83 857 100