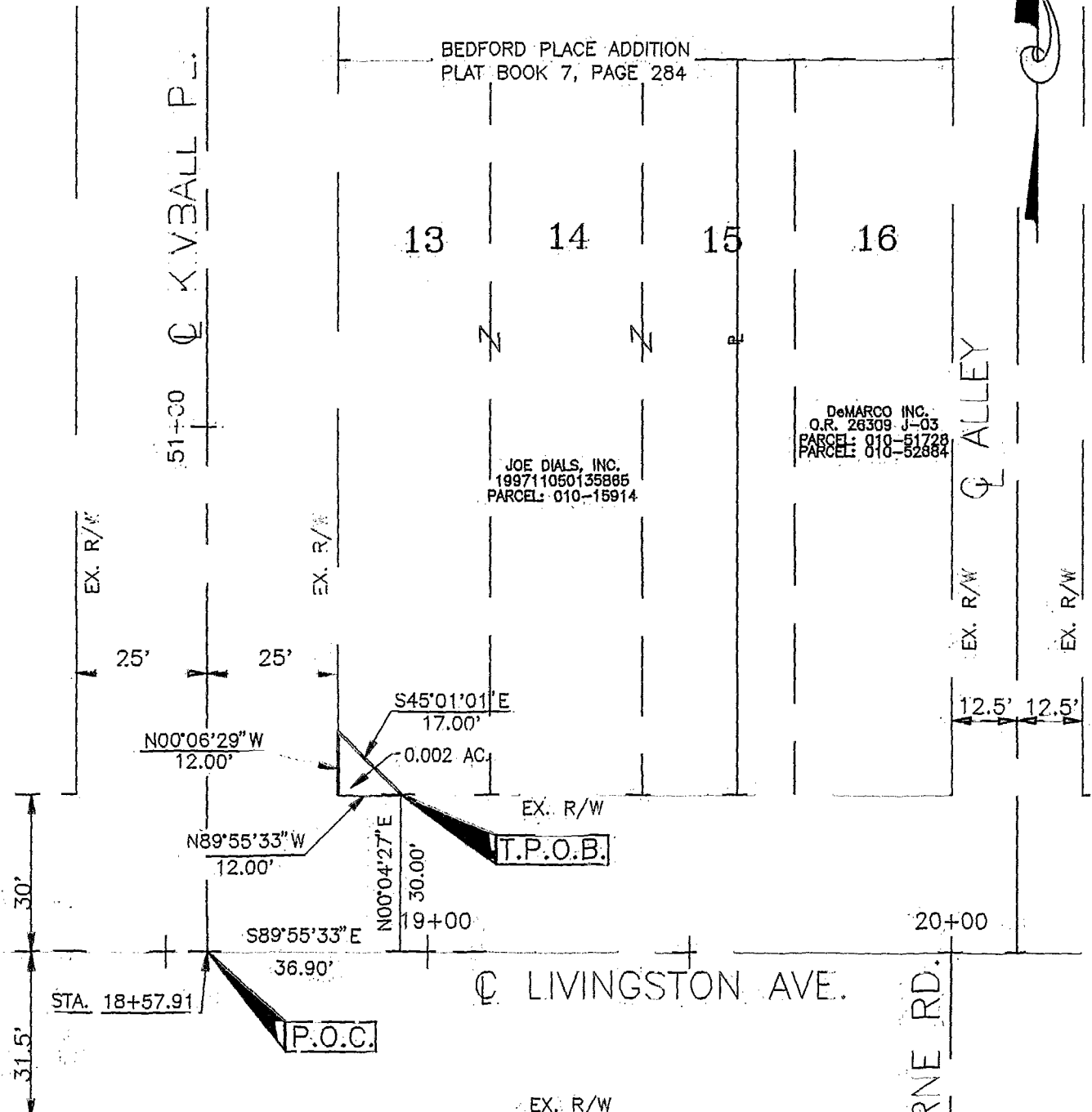
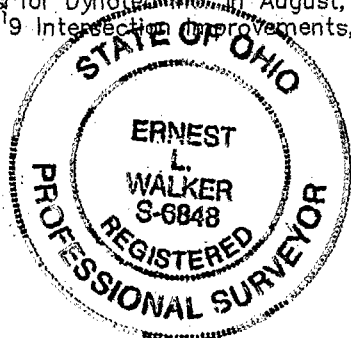


EXHIBIT B



BASIS OF BEARINGS:

Bearings were based on the centerline of Livingston Avenue as being $S 89^{\circ}55'33''E$. from a centering survey made by Paul K. Moore & Associates for Dynotec, Inc. in August, 1996 for Group 9 Intersection Improvements, C.I.P. No. 068.



GRAPHIC SCALE

SCALE 1" = 30'

**GROUP 9 INTERSECTION IMPROVEMENTS
C.I.P. NO. 068**

DYNOTEC, INC.
2700 E. DUBLIN-GRANVILLE ROAD, SUITE 6
COLUMBUS, OHIO 43231

DATE: 05/22/98

DRAWN: KJS

SCALE: 1" = 30'

DWG NO. WDB

CHECKED: ELW

[Signature]
PROFESSIONAL SURVEYOR NO. S-6848 DATE 7/15/99

83 857 100