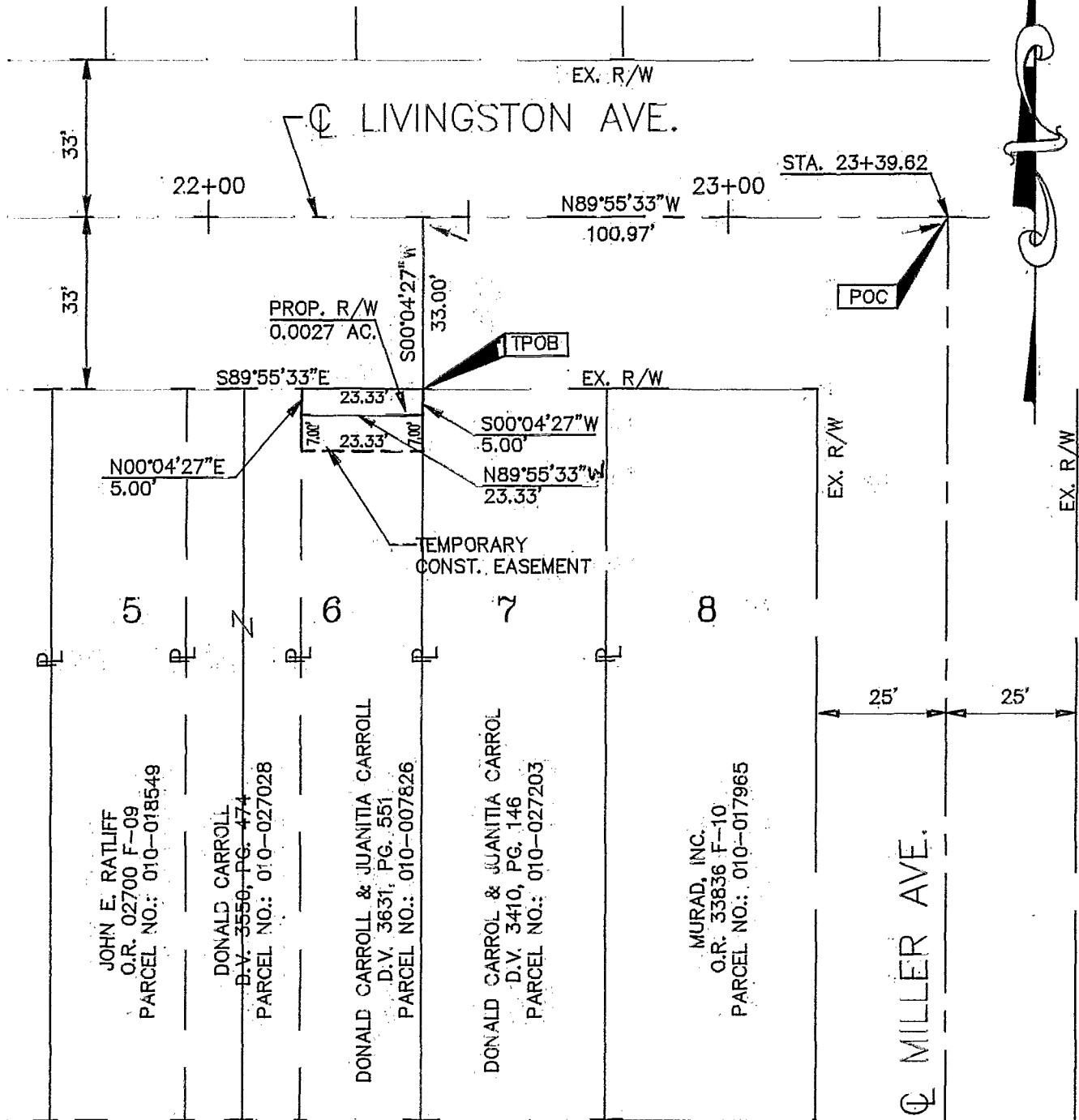


EXHIBIT B



GEORGE WILLIAMS JR.
MILLER AVENUE ADDITION
PLAT BOOK 15, PAGE 24

BASIS OF BEARINGS:

Bearings were based on the centerline of Livingston Avenue as being S 89°55'33"E. from a centerline survey made by Paul K. Moore & Associates for Dynotec Inc. in August, 1996 for Group, 9 Intersection Improvements, C.I.P. No. 068.



GRAPHIC SCALE
SCALE 1" = 30'

**GROUP 9 INTERSECTION IMPROVEMENTS
C.I.P. NO. 068**

DYNOTEC, INC.

2700 E. DUBLIN-GRANVILLE ROAD, SUITE 6
COLUMBUS, OHIO 43231

[Signature] 12/17/98
PROFESSIONAL SURVEYOR NO. S-6848 DATE

DATE: 03/23/98

DRAWN: RJS

SCALE: 1" = 30'

DWG NO. WD11/T15

CHECKED: ELW

83 857 100