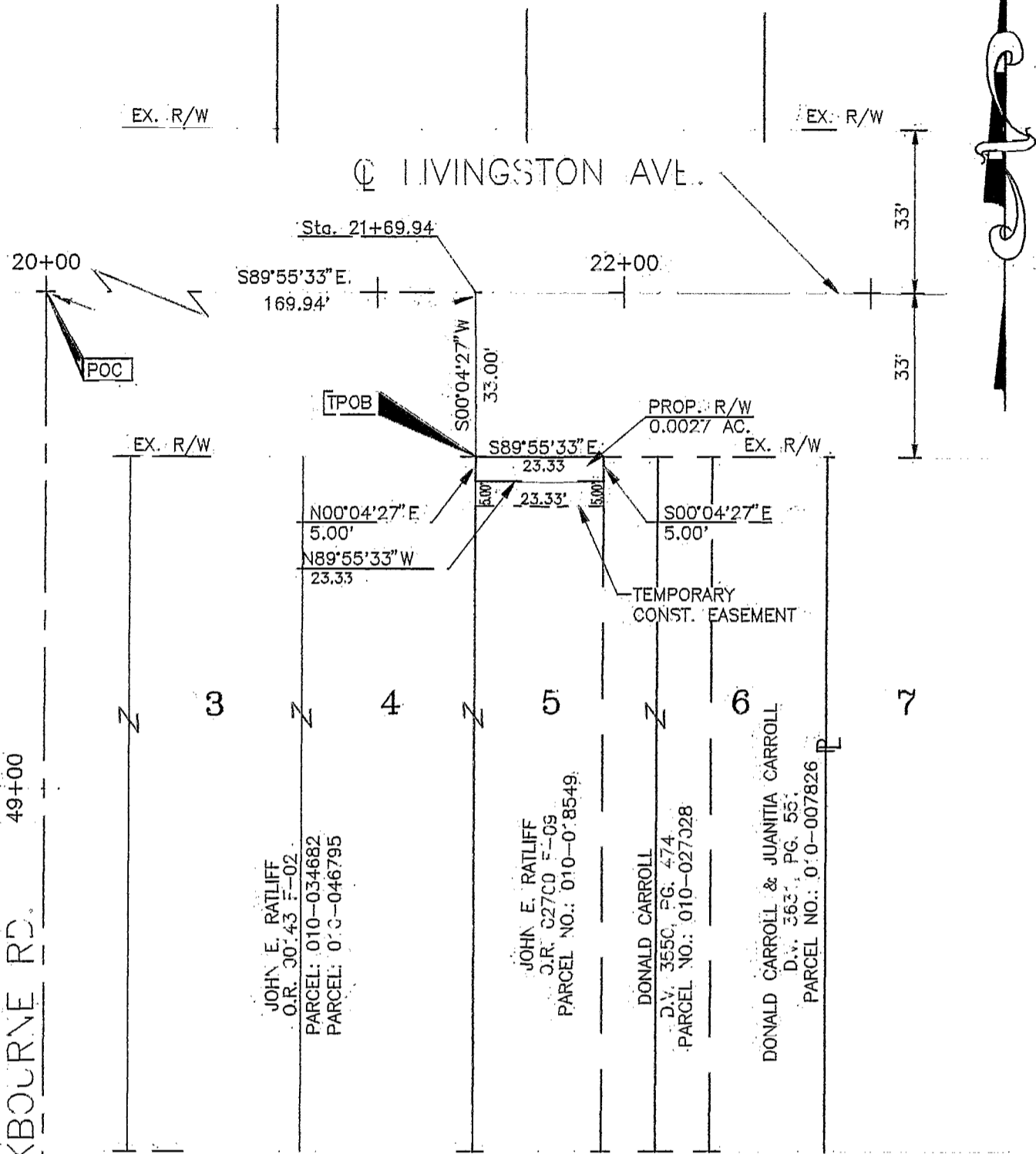


EXHIBIT B



LOCKBOURNE RD. 49+00

GEORGE WILLIAMS JR.
MILLER AVENUE ADDITION
PLAT BOOK 5, PAGE 24

BASIS OF BEARINGS:

Bearings were based on the centerline of Livingston Avenue as being S 89°55'33"E, from a centerline survey made by Paul K. Moore & Associates for Dynotec Inc. in August, 1996 for Group 9 Intersection Improvements; C.I.P. No. 068.



GRAPHIC SCALE
SCALE 1" = 30'

GROUP 9 INTERSECTION IMPROVEMENTS C.I.P. NO. 068		
DYNOTEC, INC. 2700 E. DUBLIN-GRANVILLE ROAD, SUITE 6 COLUMBUS, OHIO 43231		
DATE: 05/22/98	DRAWN: KJS	
SCALE: 1" = 30'	DWG NO. WD9/T13	CHECKED: ELW

PROFESSIONAL SURVEYOR NO. S-6848 DATE

001 658 88