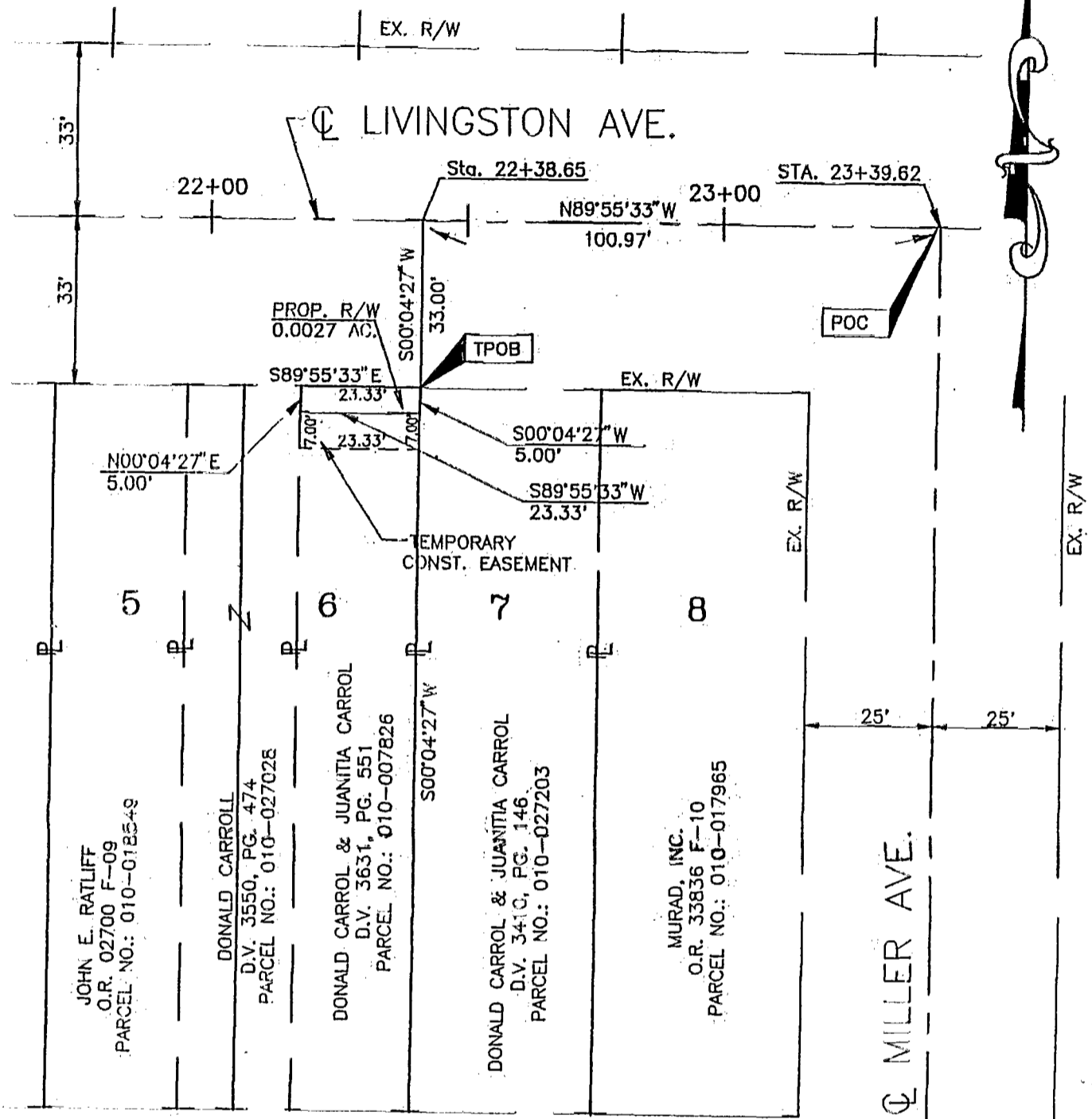


83857100

EXHIBIT B



BASIS OF BEARINGS:

Bearings were based on the centerline of Livingston Avenue as being S 89°55'33"E, from a centerline survey made by Paul K. Moore & Associates for Dynotec Inc. in August, 1996 for Group, 9 Intersection Improvements, C.I.P. No. 068.

GEORGE WILLIAMS JR.
MILLER AVENUE ADDITION
PLAT BOOK 5, PAGE 24



GRAPHIC SCALE

SCALE 1" = 30'

**GROUP 9 INTERSECTION IMPROVEMENTS
C.I.P. NO. 068**

DYNOTEC, INC.
2700 E. DUBLIN-GRANVILLE ROAD, SUITE 6
COLUMBUS, OHIO 43231

DATE: 05/20/98	DRAWN: KJS
SCALE: 1" = 30'	CHECKED: ELW
DWG NO. WD11/T15	

PROFESSIONAL SURVEYOR NO. S-6848 DATE

COLUMBUS 1-22