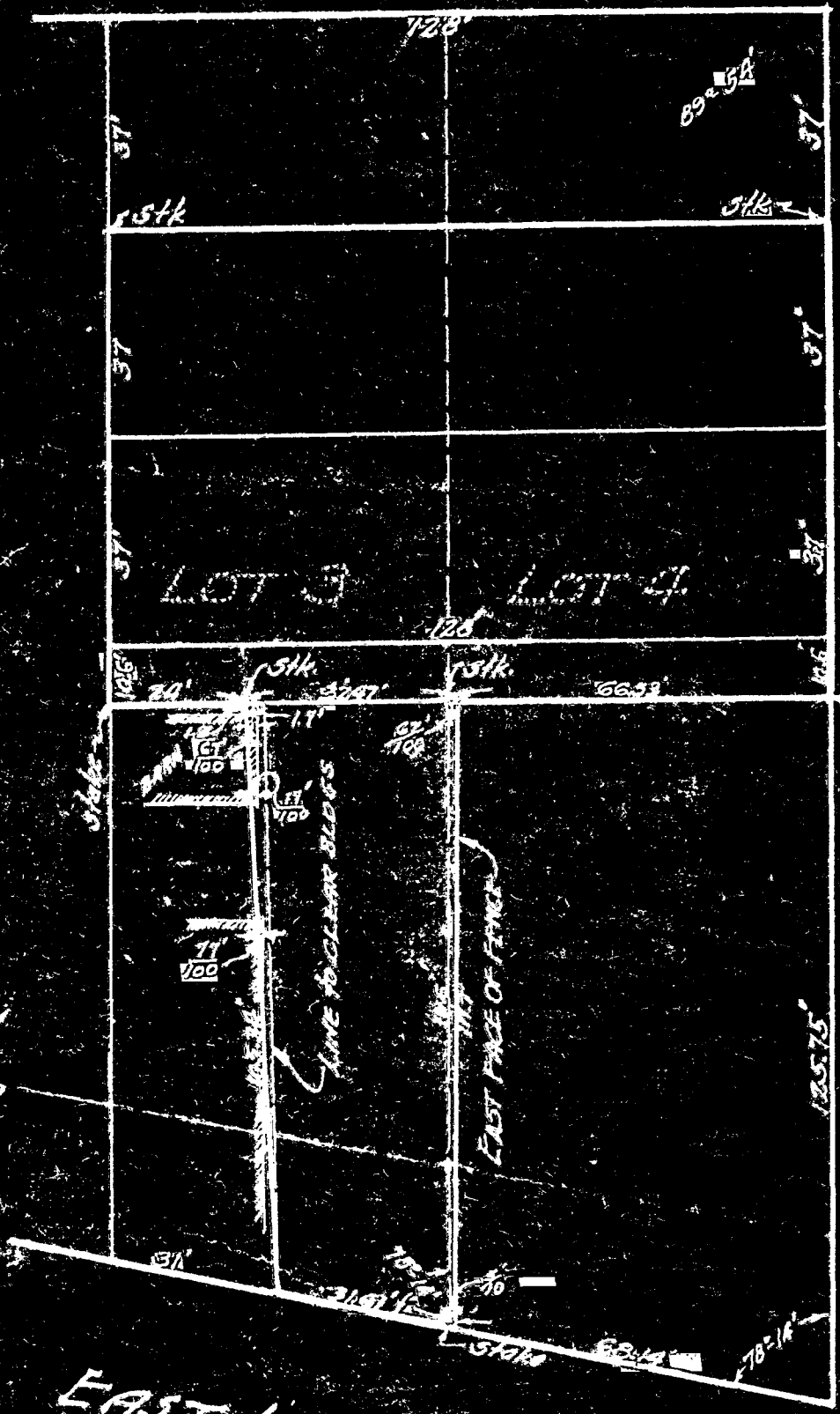


91914

G-56

WILL ALLEY 22'



SOUTH WASHINGTON AVE. 49.5'

EAST LIVINGSTON AVE. 60'

PLAT OF
 PARTS LOTS 3 & 4
 RICHARD DAVIS' ADD.
 FOR W.E. JONES, ADM.
 SCALE 1" = 30' - DEC. 31, 1928
 THE JENNINGS-LAWRENCE CO. ENGRS
 COLUMBUS, O.

SURVEY DRAWN CHECKED AND
 J.L.S. F.L.S. J.L.S. J.L.S.

REVISED JULY 10 1929 - 3022

J-1676