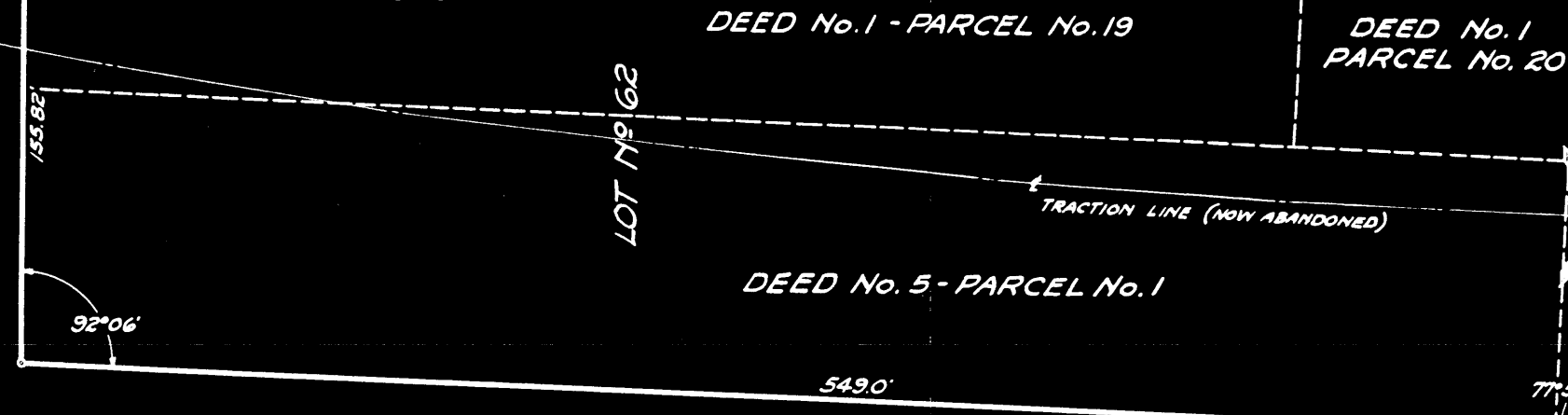
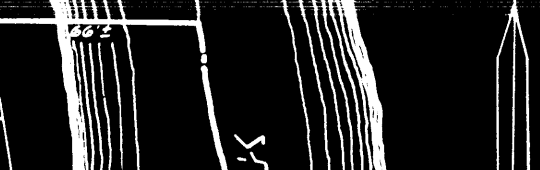
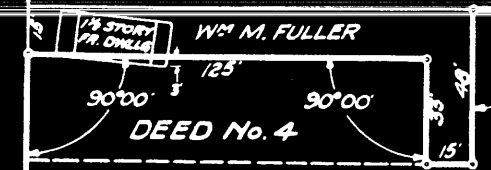


HARLOW ST. 45' (UNIMPROVED)



STATE OF OHIO
FRANKLIN COUNTY
MARION TOWNSHIP
MARTIN & STAGES
FAIRWOOD ADDITION
CITY OF COLUMBUS

REVISED 9/8/30
SOUTHERN OHIO PUBLIC SERVICE

PLAT
PROPERTY BETWEEN
HARLOW ST. AND ALUM CREEK
CITY OF COLUMBUS

SCALE 1" = 60'	DATE 5/13/29
DRAWN HRP	DWG. No.
TRACED HRP	DRAWER
APPROVED <i>Frank Howard</i>	

o CORNER UNMARKED

SURVEYED BY H.R. PYLE - MAY 3, 1929 - F.B. 514, PG. 13