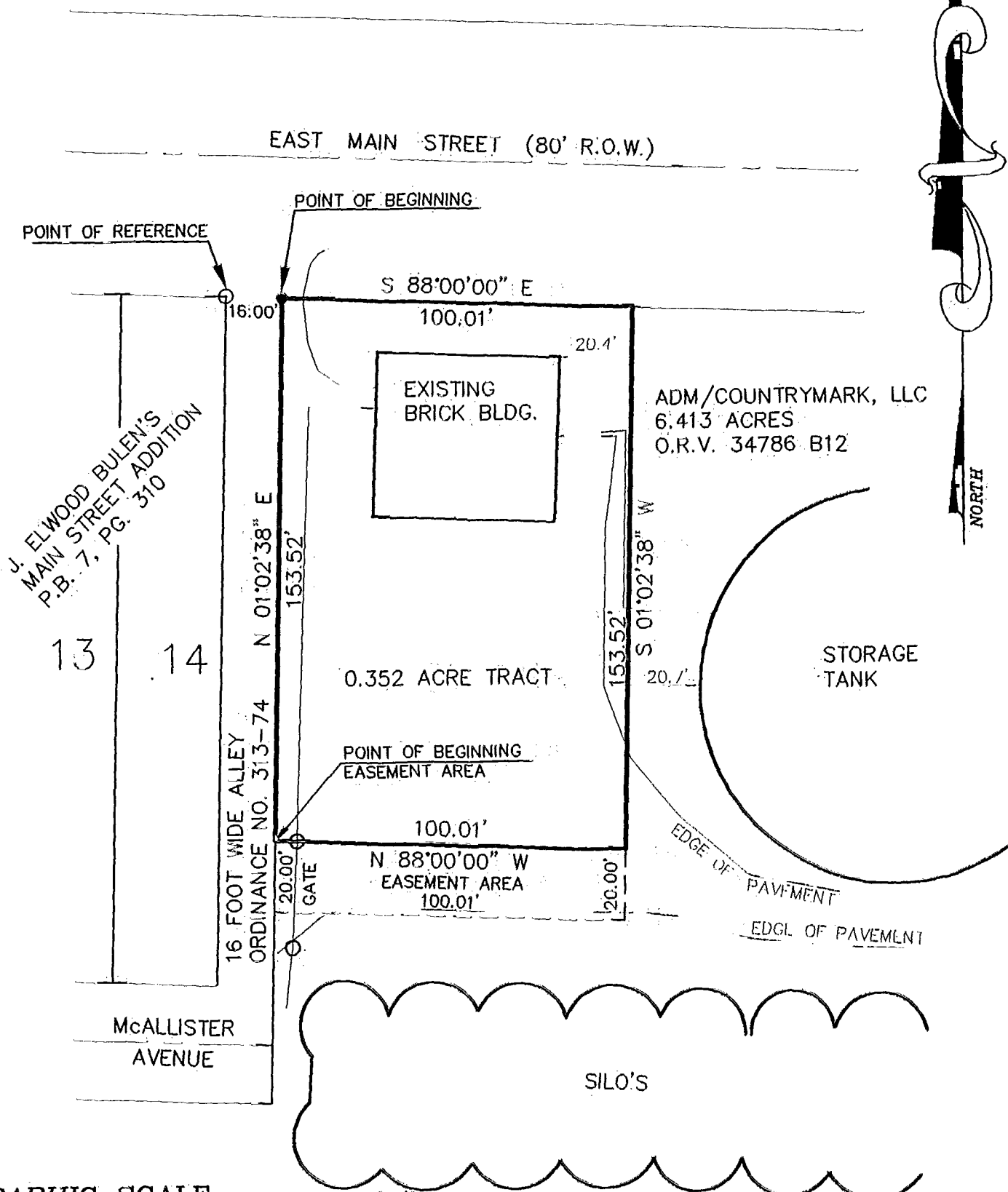


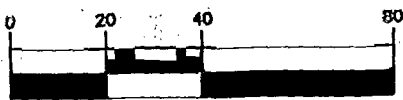


PREPARED BY:  
**HOCKADEN AND ASSOCIATES, INC.**  
 Consulting Engineers & Surveyors  
 883 North Cassady Avenue  
 Columbus, Ohio 43219  
 Telephone: (614) 252-0993  
 Fax: (614) 252-0444

THE BEARING MERIDIAN FOR THIS PLAT IS BASED ON A BEARING OF SOUTH 88°00'00" EAST ALONG THE SOUTHERLY RIGHT-OF-WAY LINE OF EAST MAIN STREET, AS DESCRIBED IN DEED TO ADM/COUNTRYMARK, LLC, OF RECORD IN OFFICIAL RECORD VOLUME 34786 B12, RECORDER'S OFFICE, FRANKLIN COUNTY, OHIO.

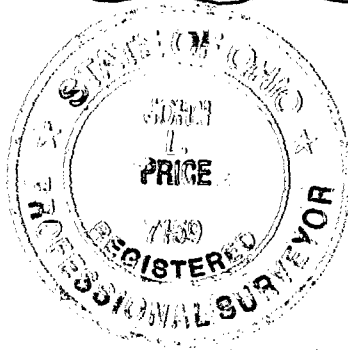


**GRAPHIC SCALE**



( IN FEET )

1 inch = 40 ft.



THE FOREGOING PLAT WAS PREPARED FROM AN ACTUAL FIELD SURVEY OF THE PREMISES IN JUNE 1995, AND IN APRIL 1997.

HOCKADEN AND ASSOCIATES, INC.  
CONSULTING ENGINEERS

By *John L. Price* 5/5/97  
JOHN L. PRICE, P.S. No. 7159

SCALE: 1"=40'

DATE: 5-05-97	40386.116
REVISED DATES	

SURVD	DRAWN	CHECKED
B.S.	J.L.P.	CK BY

84 101 125