

SURVEY OF LOT 1 OF IDE PLACE ADDITION
LOCATED IN
SECTION 10, TOWNSHIP 5, RANGE 22, REFUGEE LANDS
CITY OF COLUMBUS, FRANKLIN COUNTY, OHIO

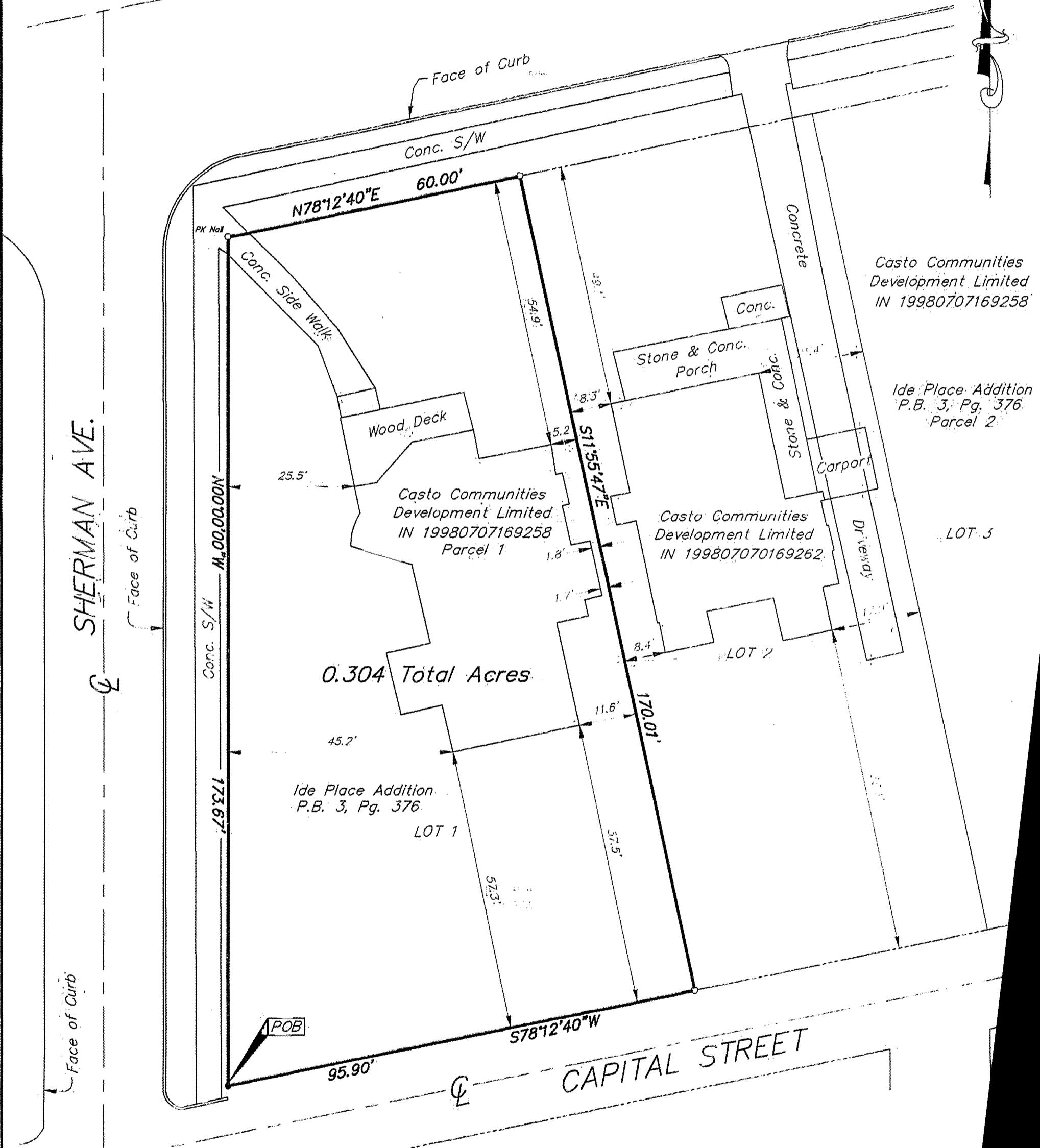
SCALE: 1" = 20'

OCTOBER 21, 1999

EAST BROAD ST.

SHERMAN AVE.

CAPITAL STREET



Casto Communities Development Limited IN 19980707169258

Ide Place Addition P.B. 3, Pg. 376 Parcel 2

Casto Communities Development Limited IN 199807070169262

Casto Communities Development Limited IN 19980707169258 Parcel 1

Ide Place Addition P.B. 3, Pg. 376

LOT 1

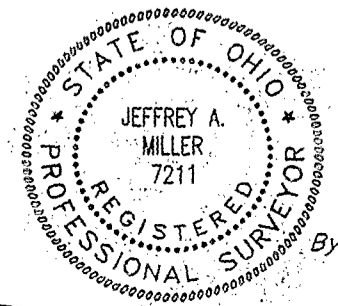
LOT 2

LOT 3

- ▲ = R.R. SPK. FND.
- △ = R.R. SPK. SET
- = I.P. FND.
- = I.P. SET

I.P.S. Set are 13/16" I.D. Iron pipe W/ cap inscribed EMH&T.

Bearings hereon are based on an assumed bearing of North 00°00'00" West for the centerline of Wilson Ave.



EMH&T, INC.

Jeffrey A. Miller
Professional Surveyor N