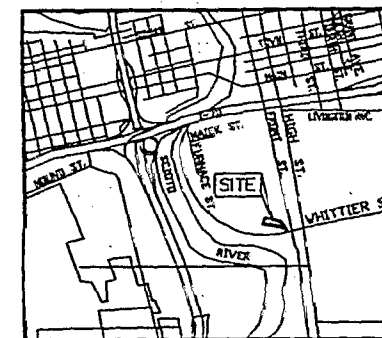
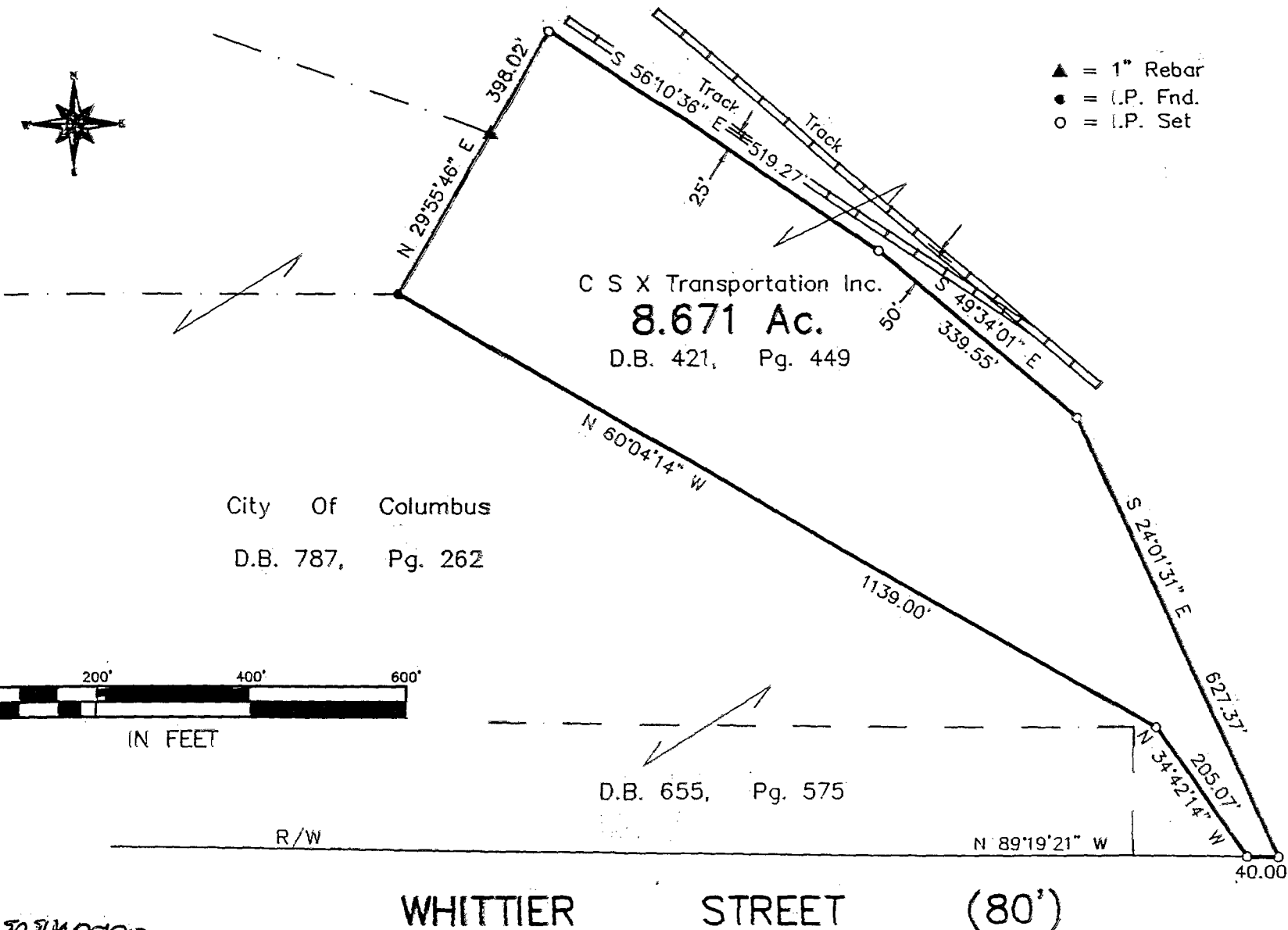


**SURVEY OF 8.671 ACRE TRACT**  
 LOCATED IN HALF SECTION 28, TOWNSHIP 5, RANGE 22  
 REFUGEE LANDS  
 CITY OF COLUMBUS, FRANKLIN COUNTY, OHIO

SCALE 1" = 200'

JULY 1, 1999

**BASIS OF BEARINGS :** The bearings shown here-  
 on are based on the same meridian as the  
 right-of-way line of Whittier Street which has  
 a bearing of (N 89°19'21" W) see right-of-way  
 drawing for Whittier Street, City Of Columbus,  
 Franklin County, Ohio.

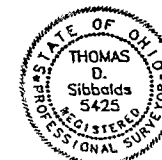


LOCATION MAP  
 NO SCALE

**E.M.H.&T. INC.**

To: CSX Transportation, Inc.  
 This is to certify that this map or plat and the survey  
 on which it is based were made (i) in accordance with  
 "Minimum Standard Detail Requirements for ALTA/ACSM  
 Land Title Surveys," jointly established and adopted by  
 ALTA, ACSM and NSPS in 1997, and includes Items  
 1, 2, 4, 7, 8, 9, 10, 12, 13, 14 & 15 of Table A  
 thereof, and (ii) pursuant to the Accuracy Standards  
 (as adopted by ALTA and ACSM and in effect on the  
 date of this certification) of an "Urban" Survey.

By Thomas D. Sibbalds  
 Professional Surveyor No. 5908



IN FEET

WHITTIER STREET (80')

F-62  
 Columbus

51010978