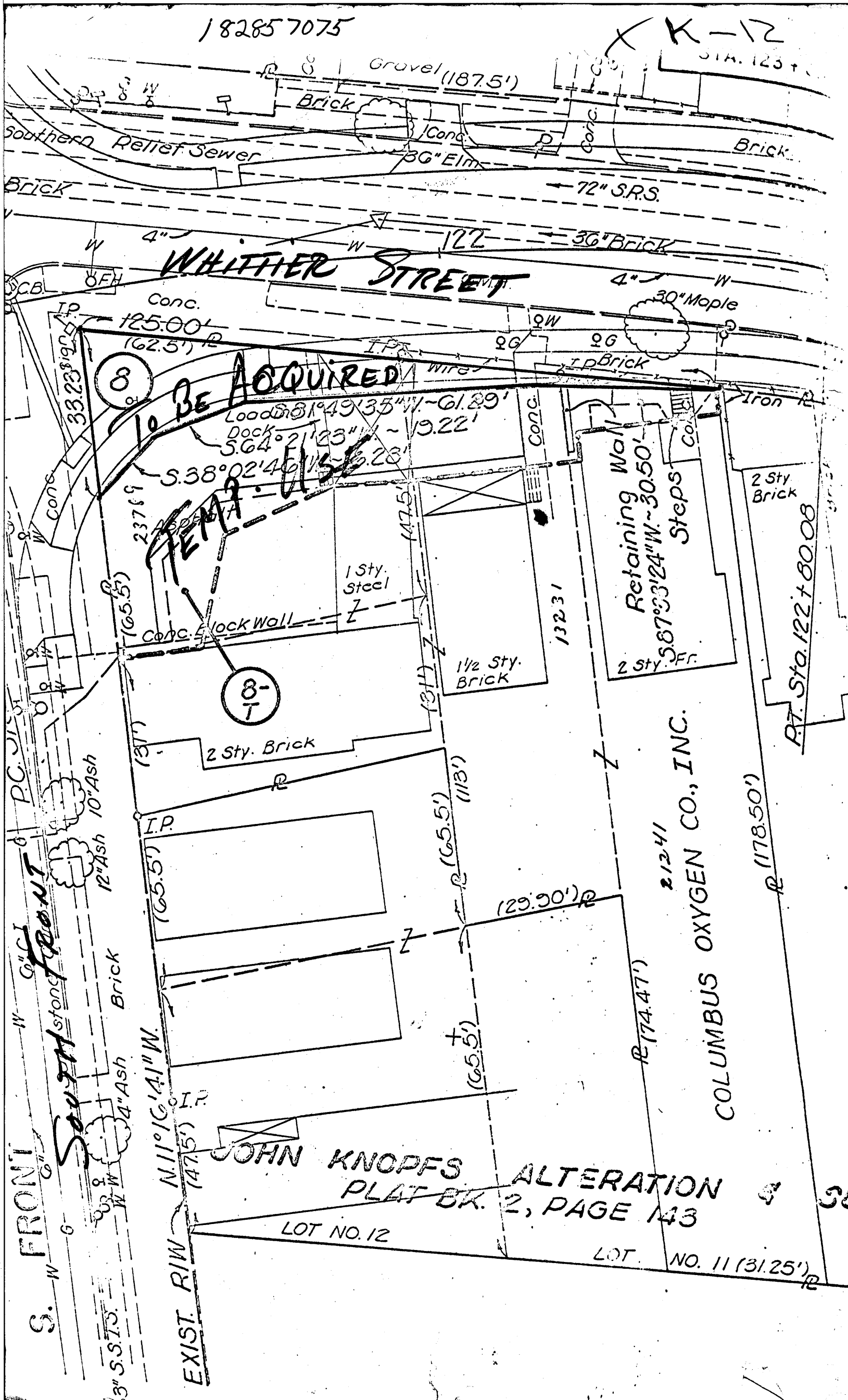


182857075

K-12

Sta. 123+



WHITTIER STREET

8

TO BE ACQUIRED

TEMP. USE

8-T

2 Sty. Brick

1 Sty. Steel

1 1/2 Sty. Brick

Retaining Wall

Steps

2 Sty. Fr.

2 Sty. Brick

Pt. Sta. 122 + 80.08

COLUMBUS OXYGEN CO., INC.

JOHN KNOPFS ALTERATION  
PLAT BK. 2, PAGE 143

LOT NO. 12

LOT NO. 11 (31.25')

S. FRONT  
3" S.S.T.S.  
4" Ash Brick  
12" Ash 10" Ash

EXIST. RIW  
N. 11° 16' 41" W.  
(47.5') I.P.

I.P.  
(65.5')

(29.90')

(65.5')

(65.5')

(65.5')

237.69

(47.5')

(31')

(131')

13231

(74.47')

21241

(178.50')

125.00'  
(62.5')

33.23'  
(19.25')

Load 81° 49' 35" W. - 61.29'  
Dock 5.64° 21' 23" W. - 19.22'  
S. 38° 02' 46" W. - 6.23'

Gravel (187.5')

Brick

36" Elm

72" S.R.S.

36" Brick

30" Maple

1 p Brick

Iron

Southern Relief Sewer

Brick

4" W

122

4" W

4" W

CB

OFH

IP

IP

IP

IP

IP

IP

IP

IP

IP

IP

IP

IP

IP

IP

IP

IP

IP

IP

IP

IP

IP

IP

IP

IP

IP

IP

IP

IP

IP

IP

IP

IP

IP

IP

IP

IP

IP

IP

IP

IP

IP

IP

IP

IP

IP

IP

IP

IP

IP

IP

IP

IP

IP

IP

IP

IP

IP

IP

IP

IP

IP

IP

IP

IP

IP

IP

IP

IP

IP

IP

IP

IP

IP

IP

IP

IP