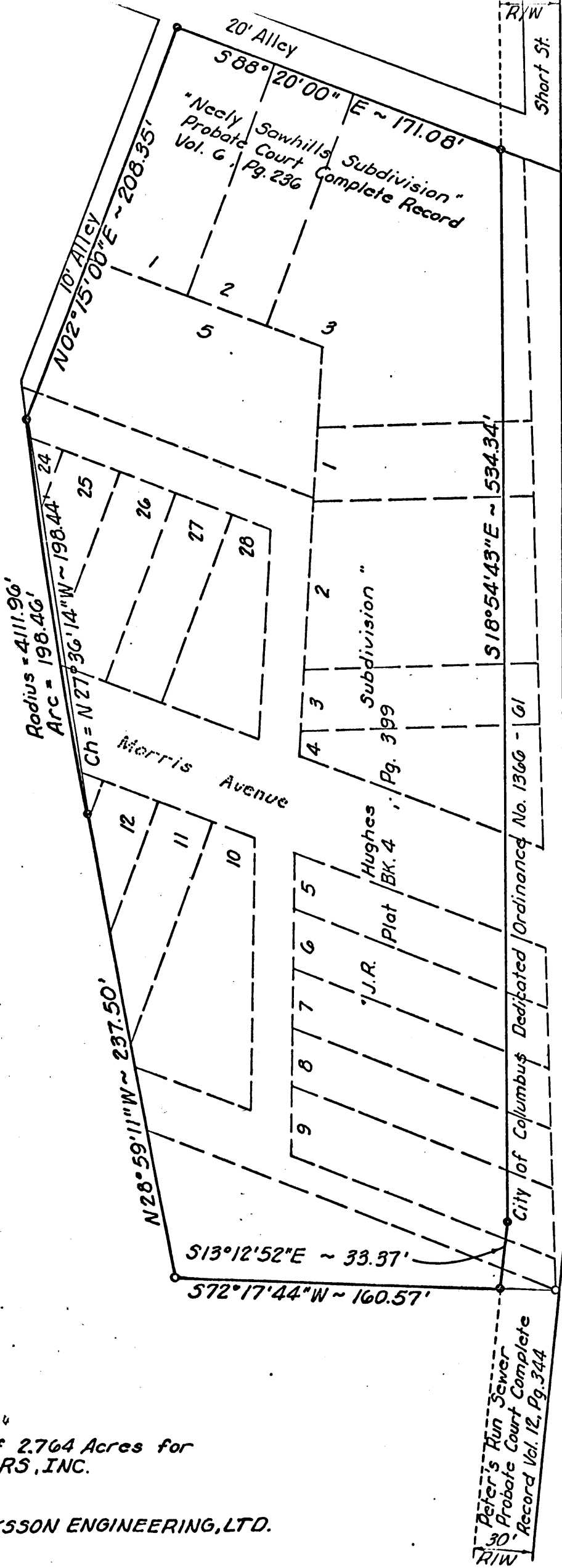


PENN-CENTRAL TRANSPORTATION COMPANY



Scale: 1" = 60'

- o Iron Pin Found
- Iron Pin Set



Property Survey of 2.764 Acres for
 CONTRACT SWEEPERS, INC.
 July 19, 1972

Prepared by ERIKSSON ENGINEERING, LTD.

West Line of Canal as established by Jennings - Lawrence Company in 1927

COLUMBUS FEEDER OF THE OHIO AND ERIE CANAL

Peter's Run Sewer
 Probate Court Complete
 Record Vol. 12, Pg. 344
 R/W

City of Columbus Ordinance No. 1366 - 61

J.R. Plot BK. 4 Pg. 399
 Hughes Subdivision

"Neely Sawhills Subdivision"
 Probate Court Complete Record
 Vol. 6, Pg. 236

R/W
 Short St.

20' Alley

10' Alley

Morris Avenue

Radius = 4111.96'
 Arc = 198.46'

Ch = N 27° 36' 14" W ~ 198.44'

S 13° 12' 52" E ~ 33.37'

S 72° 17' 44" W ~ 160.57'

S 88° 20' 00" E ~ 171.08'

S 18° 54' 43" E ~ 534.34'

N 02° 15' 06" E ~ 208.35'